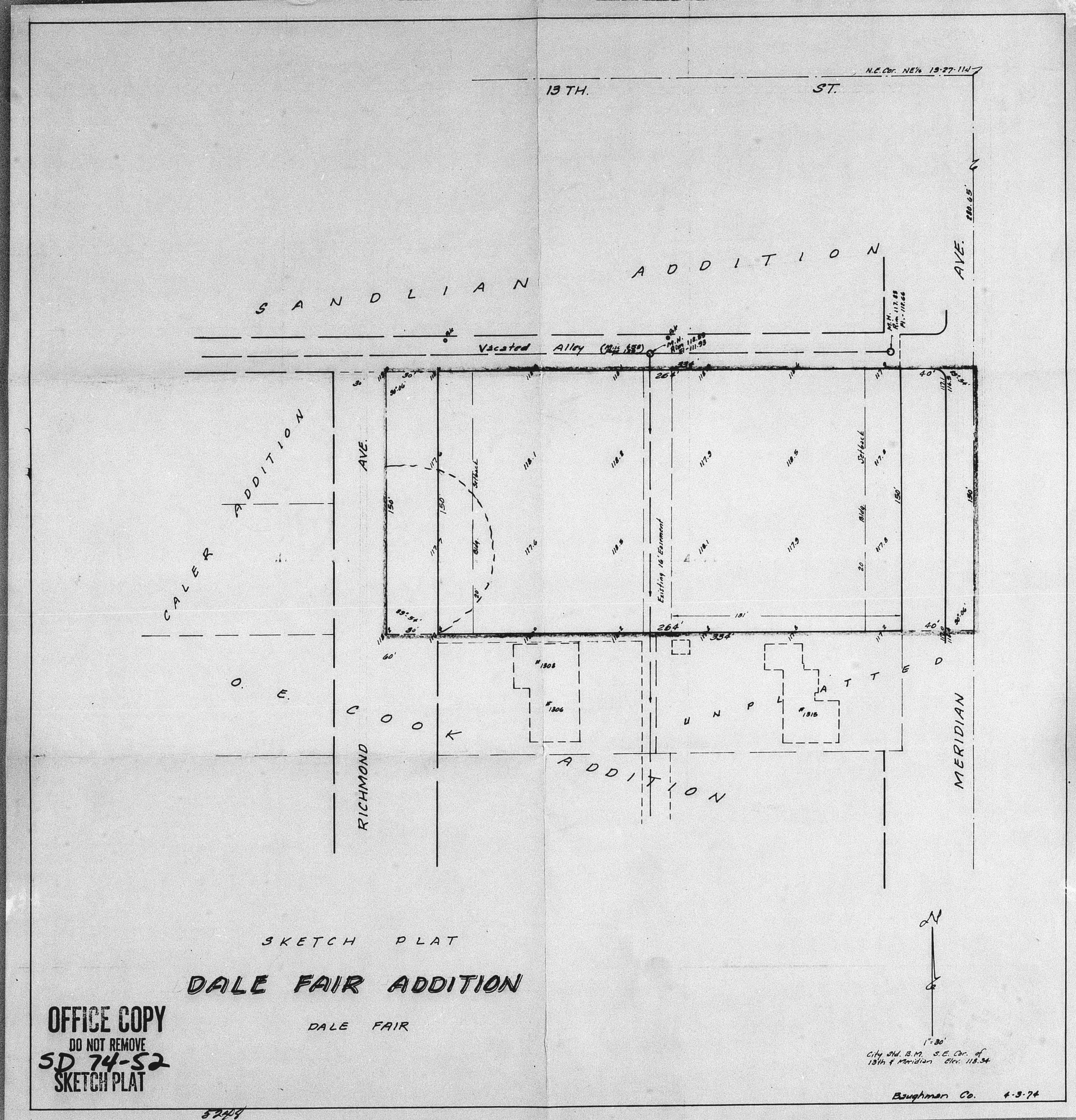


F



OFFICE COPY  
DO NOT REMOVE  
SD 74-52  
SKETCH PLAT

SKETCH PLAT  
DALE FAIR ADDITION

DALE FAIR

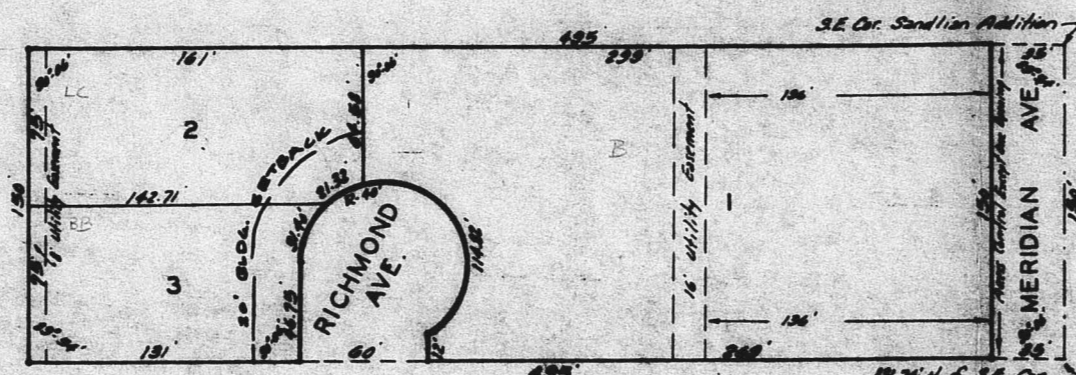
1/2" = 100'  
CITY OF S.D. S.E. COR. OF  
13th & Meridian 1891 118.54  
Boulogne Co. 4-3-76

OFFICE COPY  
DO NOT REMOVE  
SD 74-52  
FINAL PLAT

### DALE FAIR ADDITION

WICHITA, KANSAS.

S/O 71-62. Appraised subject to conditions as listed on back.



State of Kansas } S.S. We, Baughman Company, Surveyors in aforesaid  
Sedgewick County } county and state do hereby certify that we have surveyed and plotted  
"DALE FAIR ADDITION" Wichita, Kansas, and that the accompanying  
plat is a true and correct exhibit of the property surveyed, described  
as and being a replat of Lots 3 and 4, Dale Fair Addition, Sedgewick  
County, Kansas, and a tract beginning at a point 89.76 feet north of the  
S.E. Corner of the NE 1/4 of the NE 1/4 of Sec. 13, Twp. 27 S., R. 1 W.,  
thence north 150 feet; thence west parallel with the south line of  
the NE 1/4 of the NE 1/4 of said Sec. 13, 33 1/2 feet; thence south 150 feet;  
thence east 33 1/2 feet to beginning, and Richmond Ave. adjacent to  
said Lots 3 and 4, as vacated by KSA-12-512 (B).  
Baughman Company  
Date \_\_\_\_\_ Surveyor  
William L. Kinker

Know all men by these presents that we, Dale Fair  
and Jeanne Fair, his wife, and Pauline E. Bauginger and Duane  
Bauginger, her husband, and Walter K. Jabara and Blanche M. Jabara,  
his wife, and Virgil L. Nimrod, a single person, have caused the land  
described in the surveyors certificate to be divided into lots and streets  
to be known as "DALE FAIR ADDITION" Wichita, Kansas. Easements  
are hereby granted as indicated for the construction and maintenance  
of all public utilities. The streets are hereby dedicated to and for  
the use of the public. All subjects rights of access to or from  
anywhere over and across the east line of lot 4, is hereby granted to the  
City of Wichita, provided however that said lot 4 shall have access to  
Meridian at one point, as shall be determined by the City Engineer  
of the City of Wichita, Kansas.

Dale Fair \_\_\_\_\_  
Jeanne Fair \_\_\_\_\_  
Pauline E. Bauginger \_\_\_\_\_  
Duane Bauginger \_\_\_\_\_  
Walter K. Jabara \_\_\_\_\_  
Blanche M. Jabara \_\_\_\_\_  
Virgil L. Nimrod \_\_\_\_\_

State of Kansas } S.S. Be it remembered that on this \_\_\_\_\_ day of \_\_\_\_\_  
Sedgewick County } 1974, before me a notary public in aforesaid county and state came  
Dale Fair and Jeanne Fair, his wife, and Pauline E. Bauginger and Duane  
Bauginger, her husband, and Walter K. Jabara and Blanche M. Jabara,  
his wife, and Virgil L. Nimrod, a single person, to me known to be the  
same persons who executed the foregoing instrument of writing and duly  
acknowledged the execution of the same. In testimony whereof I have  
hereunto set my hand and affixed my notarial seal the day and year  
above written.

My Commission Expires \_\_\_\_\_ Notary Public  
Entered on transfer record this \_\_\_\_\_ day of \_\_\_\_\_ 1974.  
County Clerk

We, The National Bank of Wichita  
holders of a mortgage on a portion of the above described  
property do hereby consent to the plat of "DALE FAIR  
ADDITION" Wichita, Kansas.  
The National Bank of Wichita

Attest: \_\_\_\_\_  
State of Kansas } S.S. Be it remembered that on this \_\_\_\_\_ day of \_\_\_\_\_  
Sedgewick County } 1974, before me a notary public  
in aforesaid county and state came  
The National Bank of Wichita, to me known to be the  
same person who executed the foregoing instrument of  
writing and duly acknowledged the execution of the same.  
In testimony whereof I have hereunto set my hand and  
affixed my notarial seal the day and year above written.  
My Commission Expires \_\_\_\_\_ Notary Public

This plat of "DALE FAIR ADDITION"  
Wichita, Kansas, has been submitted to and approved by  
the Wichita-Sedgewick County Metropolitan Area Planning  
Commission, Wichita, Kansas.  
Dated this \_\_\_\_\_ day of \_\_\_\_\_ 1974.  
Wichita-Sedgewick County Metropolitan Area Planning Commission.  
Chairman  
Secretary

This plat approved and all  
dedications shown hereon accepted by the Board  
of Commissioners of the City of Wichita, Kansas,  
this \_\_\_\_\_ day of \_\_\_\_\_ 1974.  
Mayor  
City Clerk

This plat approved and all  
dedications shown hereon accepted by the Board  
of Commissioners of Sedgewick County, Kansas, this  
day of \_\_\_\_\_ 1974.  
Chairman  
Commissioner  
Commissioner  
County Clerk

State of Kansas } S.S. This is to certify that this  
Sedgewick County } plat was filed for record in the office of the  
Register of Deeds, this \_\_\_\_\_ day of \_\_\_\_\_  
1974, at \_\_\_\_\_ o'clock \_\_\_\_\_ M., and is duly  
recorded.  
Register of Deeds  
Deputy

OFFICE COPY  
DO NOT REMOVE  
50 74-52  
FINAL PLAT

### DALE FAIR ADDITION

WICHITA, KANSAS.

d/d 74-52 approved subject to  
conditions as listed on back.

State of Kansas } S.S. We, Baughman Company, Surveyors  
Sedgewick County } in aforesaid county and state do hereby certify that we  
have surveyed and platted "DALE FAIR ADDITION" Wichita,  
Kansas, and that the accompanying plat is a true and  
correct exhibit of the property surveyed, described  
as beginning at a point 181.76 feet north of the S.E.  
Corner of the NE<sup>1/4</sup> of the NE<sup>1/4</sup> of Sec. 18, Twp. 27 S.,  
R-1-14, thence west parallel with the south line of the  
NE<sup>1/4</sup> of the NW<sup>1/4</sup> of said Sec. 18, 234 feet; thence north  
150 feet; thence east 234 feet; thence south along  
the east line of the NW<sup>1/4</sup> of the NE<sup>1/4</sup> of said Sec. 18,  
150 feet to the point of beginning.

Baughman Company

Surveyor

Know all men by these presents  
that we Dale Fair and Jeanne Fair, his wife, have  
caused the land described in the surveyors certificate  
to be platted into a lot and streets to be known as  
"DALE FAIR ADDITION" Wichita, Kansas. An easement  
is hereby granted as indicated for the construction,  
and maintenance of all public utilities. The streets  
are hereby dedicated to and for the use of the  
public.

Dale Fair

Jeanne Fair

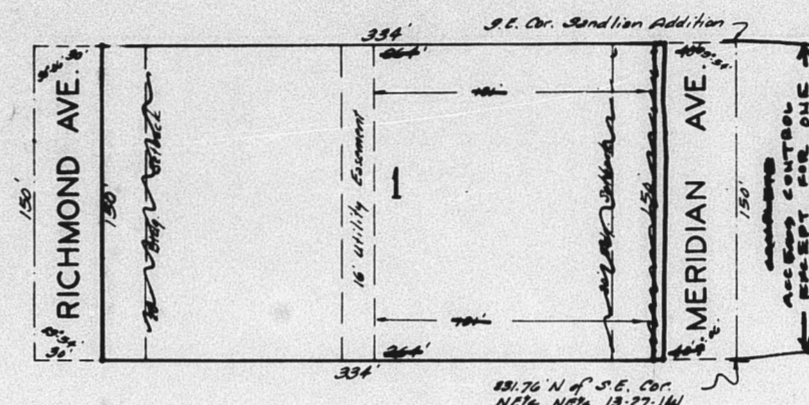
State of Kansas } S.S. Be it remembered that on this  
Sedgewick County } day of \_\_\_\_\_ 1974, before me a  
notary public in aforesaid county and state came  
Dale Fair and Jeanne Fair, his wife, to me known  
to be the same persons who executed the foregoing  
instrument of writing and duly acknowledged the  
execution of the same. In testimony whereof I  
have hereunto set my hand and affixed my notarial  
seal the day and year above written.

Notary Public

My Commission Expires \_\_\_\_\_

Entered of transfer record  
this \_\_\_\_\_ day of \_\_\_\_\_ 1974.

County Clerk



This plat of "DALE FAIR ADDITION"  
Wichita, Kansas, has been submitted to and approved  
by the Wichita-Sedgewick County Metropolitan Area  
Planning Commission, Wichita, Kansas.  
Dated this \_\_\_\_\_ day of \_\_\_\_\_ 1974.  
Wichita-Sedgewick County Metropolitan Area Planning Commission

Chairman

Secretary

This plat approved and all  
dedications shown herein accepted by the Board  
of Commissioners of the City of Wichita, Kansas,  
this \_\_\_\_\_ day of \_\_\_\_\_ 1974.

Mayer

City Clerk

This plat approved and all  
dedications shown herein accepted by the Board of  
Commissioners of Sedgewick County, Kansas, this  
\_\_\_\_\_ day of \_\_\_\_\_ 1974.

Chairman

Commissioner

Commissioner

County Clerk

State of Kansas } S.S. This is to certify that this plat  
Sedgewick County } was filed for record in the office of the Register of  
Deeds, this \_\_\_\_\_ day of \_\_\_\_\_ 1974, at  
o'clock \_\_\_\_\_ M; and is duly recorded.

Register of Deeds

Deputy

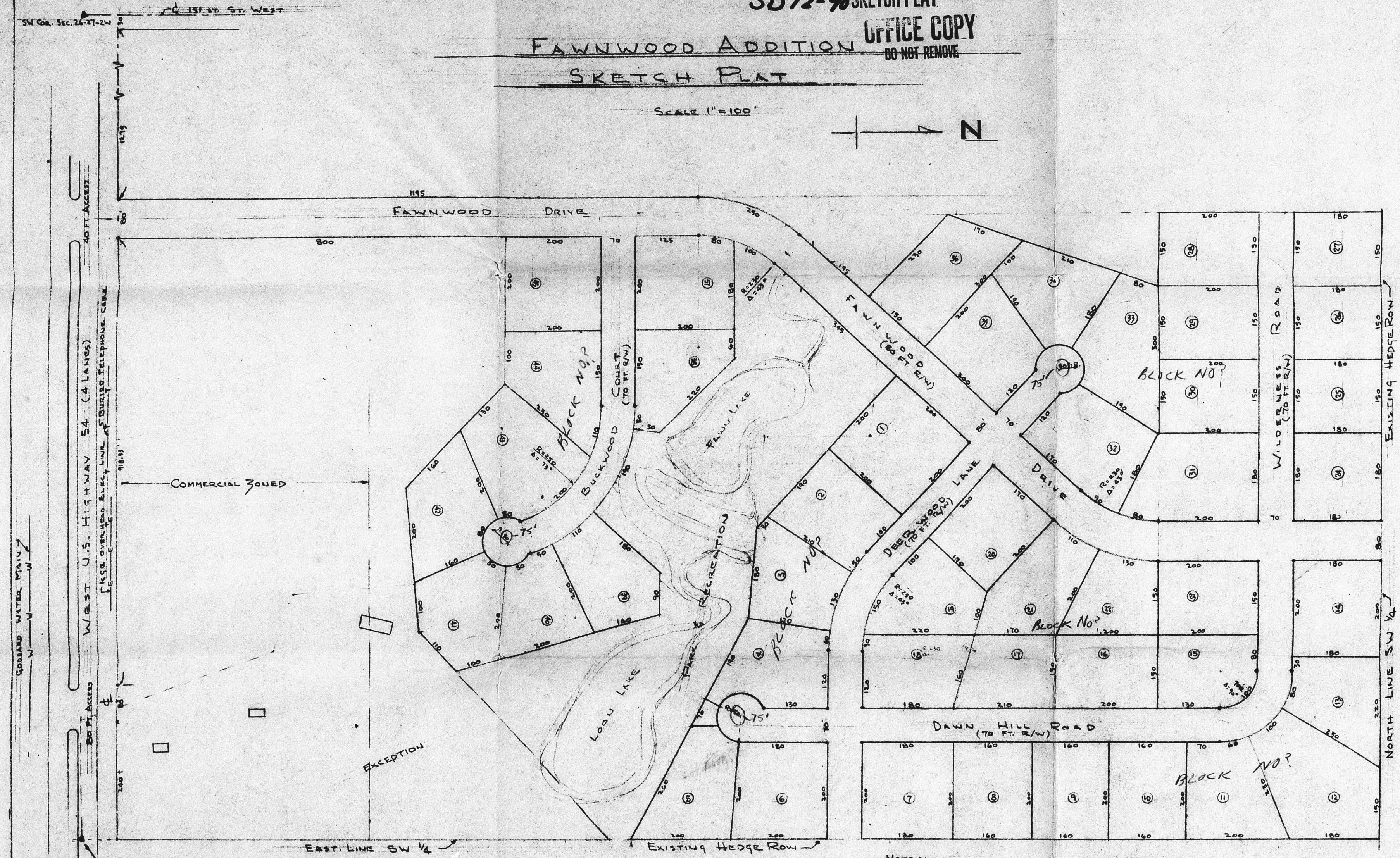
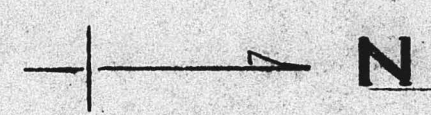
REVISED COPY

SD72-9 SKETCH PLAT

# FAWNWOOD ADDITION SKETCH PLAT

OFFICE COPY  
DO NOT REMOVE

SCALE 1"=100'



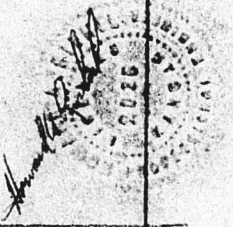
SOUTH EAST CORNER OF SOUTH WEST 1/4  
SECTION 26, TWP 27, R2W  
ATTICA TOWNSHIP, SEDGWICK COUNTY, KANSAS

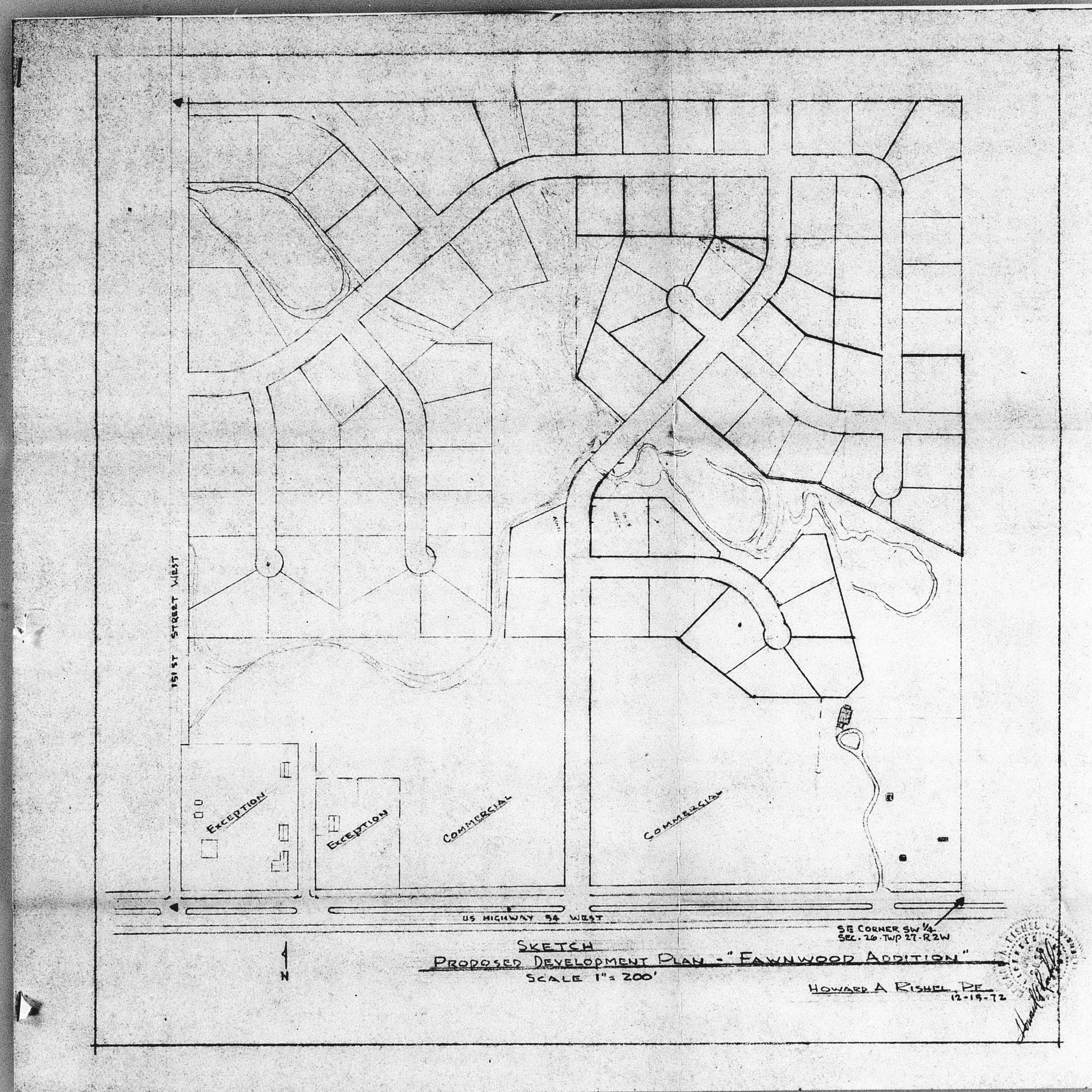
NOTES:

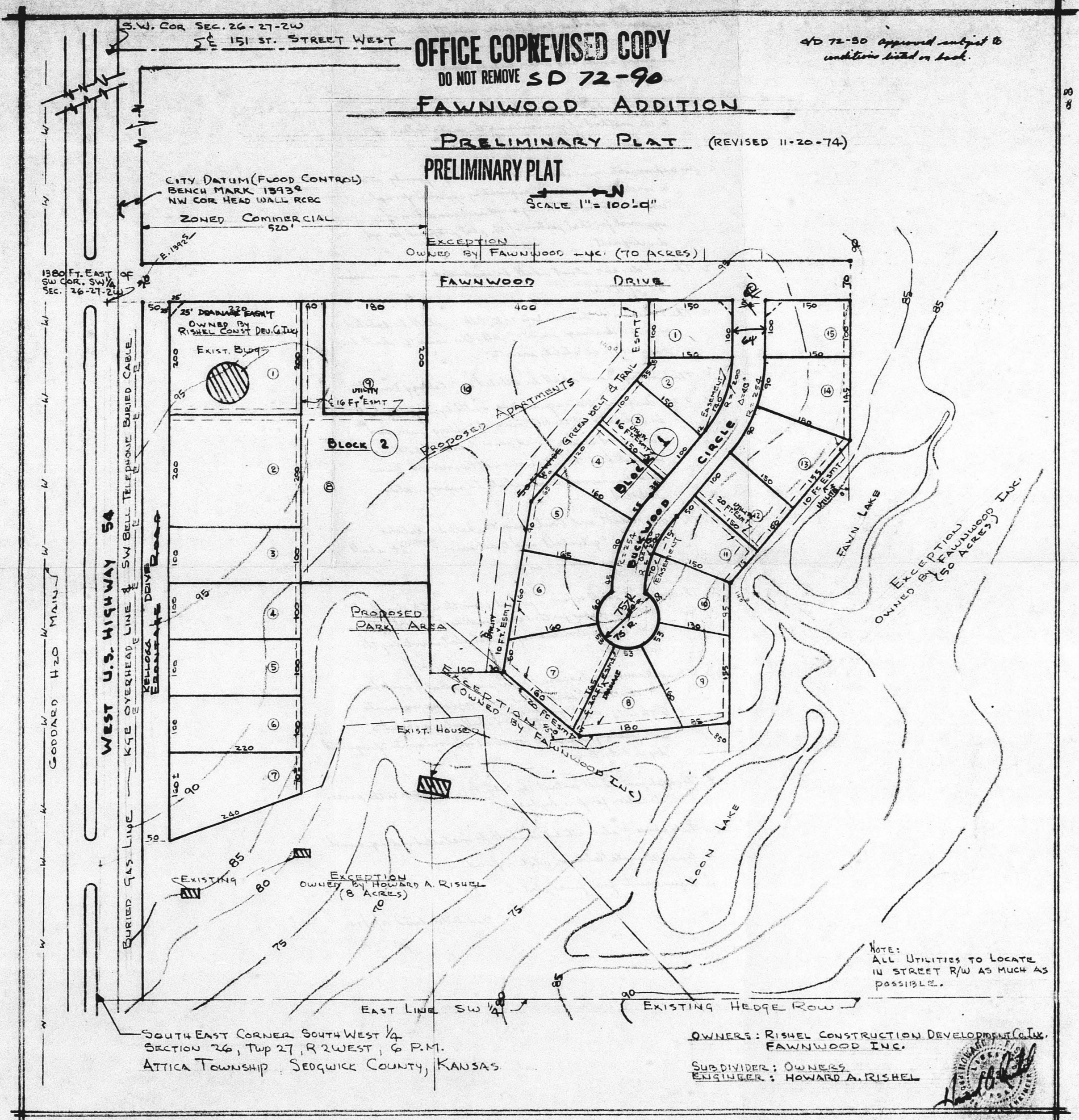
AREA SHOWN TO BE FINALED IN 5 GROUPS:

Group 1	LOTS 1-2-3-4-5-6-7-10-19-20-27-30-31-40-41	15
Group 2	LOTS 32-33-34-35-36	5
Group 3	LOTS 8-9-10-11-12-13-14-15-16-17-18-23	13
Group 4	LOTS 24-25-26-27-28-29-30-31	8
Group 5	LOTS 42-43-44-45	4
TOTAL		45

SUBMITTED BY  
HOWARD A. RISHEL, DE.  
JAN 2, 1973 PHONE 722-1201  
14526 WEST HIGHWAY 54  
WICHITA, KANSAS 67235



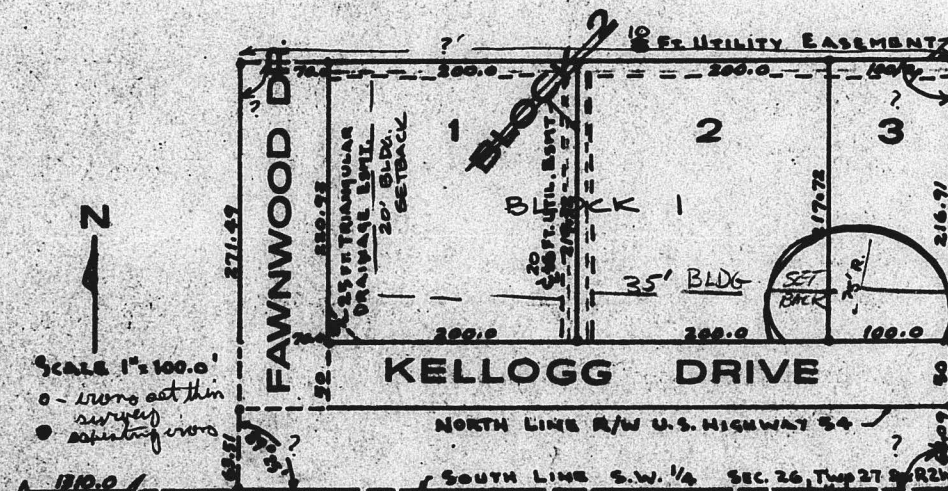




# FAWNWOOD ADDITION

TO  
SEDGWICK COUNTY, KANSAS  
LOTS 1, 2, 3 BLOCK 2

OFFICE COPY  
DO NOT REMOVE  
SD 72-90  
FINAL PLAT



Scale 1" = 100'  
N  
Point of Beginning

THIS PLAT OF "FAWNWOOD ADDITION" HAS BEEN SUBMITTED TO AND APPROVED BY THE WICHITA SEDGWICK COUNTY METROPOLITAN AREA PLANNING COMMISSION, WICHITA, SEDGWICK COUNTY, KANSAS.

WICHITA-SEDGWICK COUNTY METROPOLITAN AREA PLANNING COMMISSION  
CHAIRMAN  
SECRETARY

THIS PLAT APPROVED AND ALL DEDICATIONS SHOWN HERON, IF ANY, ACCEPTED BY THE BOARD OF COUNTY COMMISSIONERS, COUNTY OF SEDGWICK, STATE OF KANSAS.

BOARD OF COUNTY COMMISSIONERS  
CHAIRMAN  
COMMISSIONER  
COMMISSIONER

ENTERED ON TRANSFER RECORD THIS DAY OF 19

STATE OF KANSAS, COUNTY OF SEDGWICK, S.S.  
THIS IS TO CERTIFY THAT THIS INSTRUMENT WAS FILED FOR RECORD IN THE REGISTER OF DEEDS OFFICE, AT \_\_\_\_\_, MO., ON THIS DAY OF 19

REGISTER OF DEEDS  
DEPUTY

KNOW ALL MEN BY THESE PRESENTS THAT WE SIGNED CONSTRUCTION DEVELOPMENT ORDINANCE NO. 100 AND HAVE LAYED THE LANE DESCRIBED IN THE ENGINEERS' PLAT TO BE PLATED AS A BLOCK TO BE KNOWN AS "FAWNWOOD ADDITION" TO SEDGWICK COUNTY, KANSAS.

STATE OF KANSAS, COUNTY OF SEDGWICK, S.S.

BY COMMISSION EXPIRES 1-1-75

THE CITIZENS STATE BANK OF CHENEY, KANSAS  
PRESIDENT

STATE OF KANSAS, COUNTY OF SEDGWICK, S.S.

BY COMMISSION EXPIRES 1-1-75

Edward Hombach  
NOTARY PUBLIC

STATE OF KANSAS, COUNTY OF SEDGWICK, S.S.

Edward Hombach  
NOTARY PUBLIC

- (A) The legal description in the engineer's certificate shall be corrected as follows: "... shall be generally with the S. line of said 1/4 section 570 feet... shown as 570' to the point of beginning."
- (B) The plat is to be recorded as follows: "... platted into a block, lot and street to be known as..."
- (C) An overall dimension for the N. line of the plat shall be indicated on the face of the plat.
- (D) The road number for the U.S. Highway R.O.W. shall be indicated on the face of the plat.
- (E) A legend for the new lot on the plat survey shall be indicated beneath the N. arrow and scale on the face of the plat.
- (F) The appropriate text and signature block for the acceptance of the plat by the S.C.C. shall be indicated on the face of the plat.
- (G) All signatures hereon shall be appropriately labeled.

STATE OF KANSAS, COUNTY OF SEDGWICK, S.S.  
I, EDWARD A. SHERIDAN, PROFESSIONAL ENGINEER, DO HEREBY CERTIFY THIS 23rd DAY OF DECEMBER, 1974, THAT I HAVE SURVEYED AND PLATED "FAWNWOOD ADDITION" IN SEDGWICK COUNTY, KANSAS, AND THAT THE ABOVE-RECORDED PLAT IS A TRUE AND CORRECT STATEMENT OF A PART OF LAND LOCATED IN THE SOUTH WEST CORNER OF SECTION 24, TOWNSHIP 27, SOUTH RANGE 2 WEST OF THE SEVEN (7) PRINCIPAL MERIDIAN, IN SEDGWICK COUNTY, KANSAS.

DECEASED AS BEGINNING AT A POINT 1310 FEET EAST OF THE SOUTHWEST CORNER OF THE SOUTHWEST QUARTER (SW 1/4) SECTION TWENTY-THREE (23), TOWNSHIP SEVEN (7) SOUTH RANGE TWO (2) WEST OF THE SEVEN (7) PRINCIPAL MERIDIAN IN SEDGWICK COUNTY, KANSAS; THENCE NORTH AS AN ARCADE OF EIGHTY-NINE DEGREES TWENTY-FIVE MINUTES A DISTANCE OF 335.0 FEET; THENCE EAST PARALLEL TO SOUTH LINE OF SAID SECTION 24, 20 FEET; THENCE SOUTH 234 FEET TO THE NORTH LINE OF SAID SECTION, THENCE WEST 270 FEET TO POINT OF BEGINNING, EXCEPT FOR U.S. HIGHWAY 40 EIGHT (8) FEET.

STATE OF KANSAS, COUNTY OF SEDGWICK, S.S.

BY COMMISSION EXPIRES 1-1-75

Edward Hombach  
NOTARY PUBLIC

STATE OF KANSAS, COUNTY OF SEDGWICK, S.S.

Edward Hombach  
NOTARY PUBLIC

STATE OF KANSAS, COUNTY OF SEDGWICK, S.S.

Edward Hombach  
NOTARY PUBLIC

STATE OF KANSAS, COUNTY OF SEDGWICK, S.S.

Edward Hombach  
NOTARY PUBLIC

- (H) The applicant shall bear the cost of all surveys, including the cost of the use of a survey tank system. Said cost shall be increased in any amount as indicated on the final plat.
- (I) Letters from the Health Department regarding use of individual water and septic tank systems until town or municipal water and sewer are available to serve subject property.
- (J) A temporary cut-de-sec shall be indicated on the N. end of Kellogg Dr. The applicant shall contact Planning regarding this matter.
- (K) Section angles shall be indicated on the face of the plat.
- (L) The 16' utility easement between Lot 1 & 2 shall be increased to 20' in width and the 6' utility easement adjacent to the N. line of lots 1, 2 & 3, Block 2, shall be increased to 10' in width.
- (M) A 35' alley setback shall be indicated adjacent to Kellogg Dr. on lots 1, 2, & 3, and a 20' alley setback adjacent to Fawnwood Dr. on Lot 1.

OVER



14. The applicant shall submit appropriate plans and profiles for street and associated drainage improvements, to the City Eng. & letter obtained from the City Eng. approving said plans shall be submitted to the Planning Dept. The applicant shall also submit a satisfactory guarantee for street improvements if required by the City Eng.

C. Both telephone & electric shall be installed underground.

D. Bounding of the plot...

See letter dated 11/10/75  
JK

ADD FAWNWOOD  
TO  
SEDCWICK COUNTY, KANSAS  
LOT 123 BLOCK 2  
OFFICE COPY  
CD 75-99  
MAY 1975



OFFICE COPY  
DO NOT REMOVE 5D 74-100

# FINAL PLAT Fountain Hills Addition

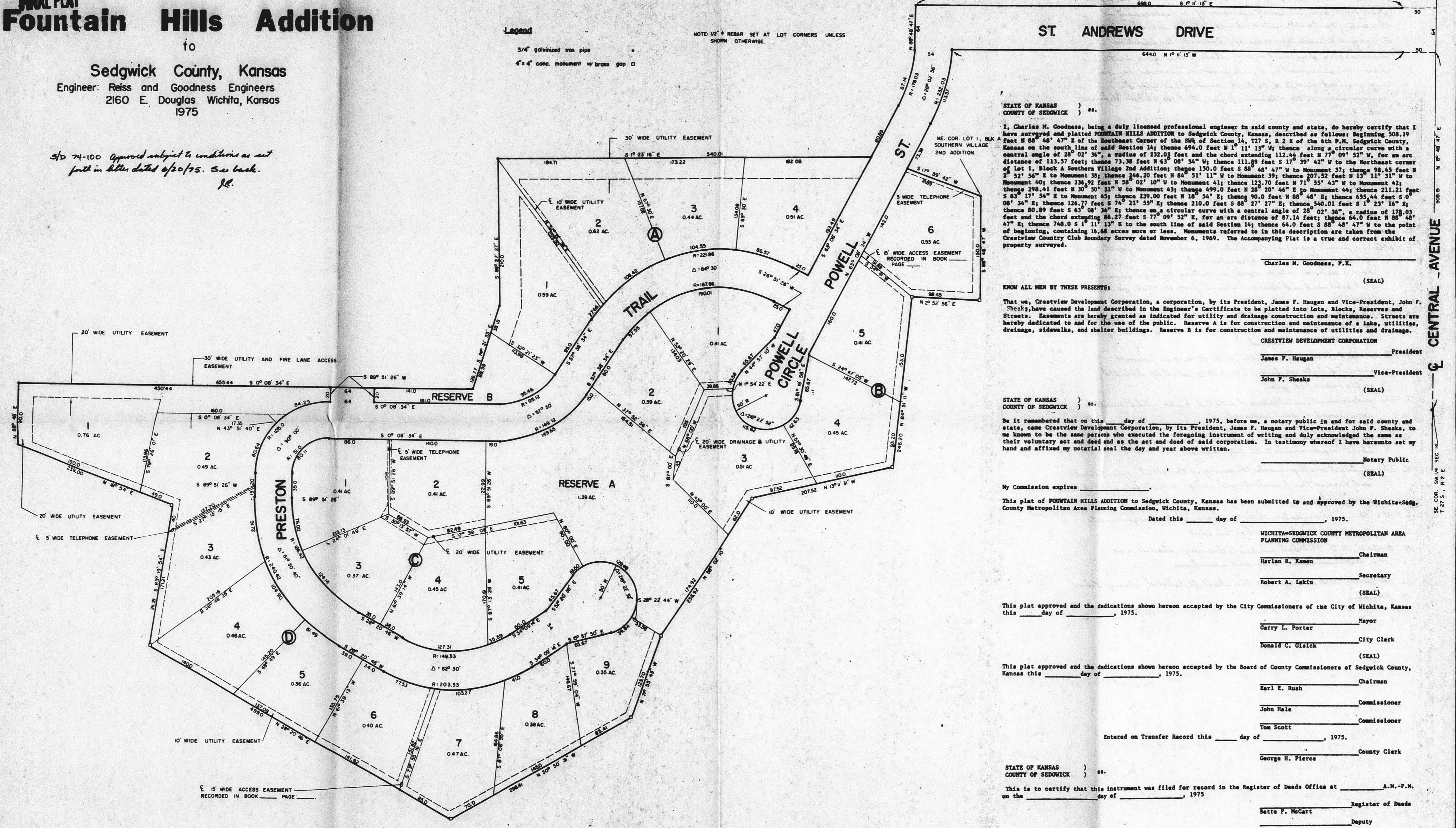
to  
Sedgwick County, Kansas  
Engineer: Reiss and Goodness Engineers  
2160 E. Douglas Wichita, Kansas  
1975

5D 74-100 approved subject to conditions as set  
forth in letter dated 6/30/75. See back.  
J.R.

NORTH  
SCALE: 1" = 60'-0"

Legend  
3/4" galvanized iron pipe  
4" x 4" conc. monument w/ brass cap

NOTE: 1/2" REBAR SET AT LOT CORNERS UNLESS SHOWN OTHERWISE.



STATE OF KANSAS )  
COUNTY OF SEDGWICK ) ss.  
I, Charles M. Goodness, being a duly licensed professional engineer in said county and state, do hereby certify that I have surveyed and platted FOUNTAIN HILLS ADDITION to Sedgwick County, Kansas, described as follows: Beginning 508.19 feet N 88° 48' 47" E of the Southeast Corner of the SW 1/4 of Section 14, T27 S, R2 E of the 6th P.M. Sedgwick County, Kansas on the south line of said Section 14; thence 694.0 feet N 11° 13' 31" W thence along a circular curve with a central angle of 28° 02' 34", a radius of 232.03 feet and the chord extending 112.64 feet S 77° 09' 25" W, for an arc distance of 113.57 feet; thence 73.36 feet N 63° 08' 34" W; thence 111.89 feet S 17° 39' 42" W to the Northeast corner of lot 1, Block A Southern Village 2nd Addition; thence 150.0 feet S 68° 48' 47" W to Monument 27; thence 98.45 feet N 2° 51' 56" E to Monument 38; thence 246.20 feet N 84° 51' 11" W to Monument 39; thence 207.32 feet N 13° 11' 31" W to Monument 40; thence 236.91 feet N 28° 02' 10" W to Monument 41; thence 123.70 feet N 73° 35' 43" W to Monument 42; thence 298.41 feet N 30° 30' 31" W to Monument 43; thence 499.0 feet N 28° 20' 46" E to Monument 44; thence 211.21 feet S 83° 17' 34" E to Monument 45; thence 239.00 feet N 18° 54' 51" E; thence 90.0 feet N 88° 48' 47" E; thence 652.44 feet S 0° 00' 34" E; thence 138.77 feet S 74° 21' 35" E; thence 210.0 feet S 88° 27' 22" E; thence 340.01 feet S 1° 21' 18" E; thence 80.89 feet S 45° 08' 34" E; thence along a circular curve with a central angle of 28° 02' 34", a radius of 178.03 feet and the chord extending 86.23 feet S 77° 09' 25" W, for an arc distance of 87.14 feet; thence 64.0 feet N 88° 48' 47" E; thence 748.0 S 1° 11' 13" E to the south line of said Section 14; thence 64.0 feet S 88° 48' 47" W to the point of beginning, containing 10.68 acres more or less. Monuments referred to in this description are taken from the Crestview Country Club Boundary Survey dated November 4, 1969. The Accompanying Plat is a true and correct exhibit of property surveyed.

Charles M. Goodness, P.E.  
(SEAL)

KNOW ALL MEN BY THESE PRESENTS:  
That we, Crestview Development Corporation, a corporation, by its President, James F. Hagan and Vice-President, John F. Sheaks, have caused the land described in the Engineer's Certificate to be platted into lots, blocks, reserves and streets. Easements are hereby granted as indicated for utility and drainage construction and maintenance. Streets are hereby dedicated to and for the use of the public. Reserve A is for construction and maintenance of a lake, utilities, drainage, sidewalks, and other buildings. Reserve B is for construction and maintenance of utilities and drainage.

CRESTVIEW DEVELOPMENT CORPORATION  
President  
James F. Hagan  
Vice-President  
John F. Sheaks  
(SEAL)

STATE OF KANSAS )  
COUNTY OF SEDGWICK ) ss.  
Be it remembered that on this \_\_\_\_\_ day of \_\_\_\_\_, 1975, before me, a notary public in and for said county and state, came Crestview Development Corporation, by its President, James F. Hagan and Vice-President John F. Sheaks, to me known to be the same persons who executed the foregoing instrument of writing and duly acknowledged the same as their voluntary act and deed and as the act and deed of said corporation. In testimony whereof I have hereunto set my hand and affixed my notarial seal the day and year above written.

Notary Public  
(SEAL)

My Commission expires \_\_\_\_\_  
This plat of FOUNTAIN HILLS ADDITION to Sedgwick County, Kansas has been submitted to and approved by the Wichita-Sedgwick County Metropolitan Area Planning Commission, Wichita, Kansas.  
Dated this \_\_\_\_\_ day of \_\_\_\_\_, 1975.

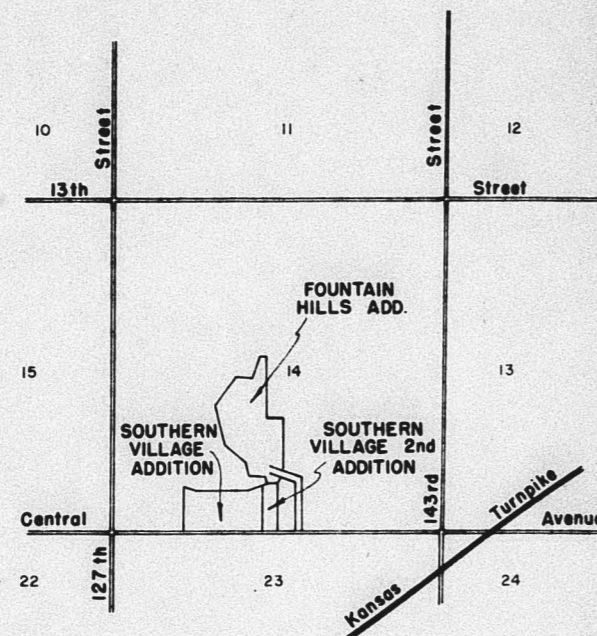
WICHITA-SEDGWICK COUNTY METROPOLITAN AREA  
PLANNING COMMISSION  
Chairman  
Harlan R. Kaman  
Secretary  
Robert A. Lakin  
(SEAL)

This plat approved and the dedications shown hereon accepted by the City Commissioners of the City of Wichita, Kansas this \_\_\_\_\_ day of \_\_\_\_\_, 1975.  
Mayor  
Garry L. Porter  
City Clerk  
Donald C. Ditzick  
(SEAL)

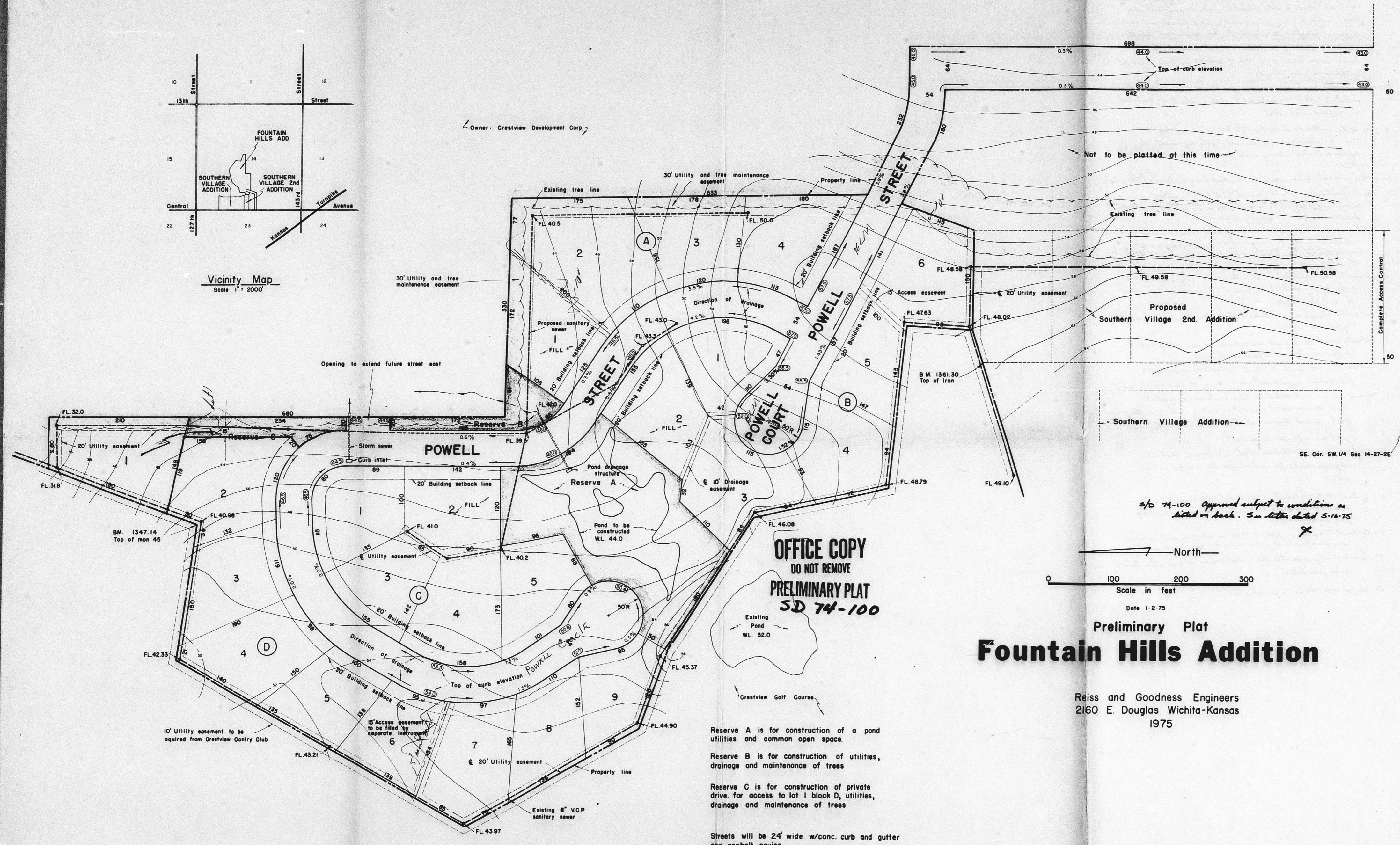
This plat approved and the dedications shown hereon accepted by the Board of County Commissioners of Sedgwick County, Kansas this \_\_\_\_\_ day of \_\_\_\_\_, 1975.  
Chairman  
Earl E. Rush  
Commissioner  
John Hale  
Commissioner  
Tom Scott  
(SEAL)

Entered on Transfer Record this \_\_\_\_\_ day of \_\_\_\_\_, 1975.  
County Clerk  
George H. Pierce

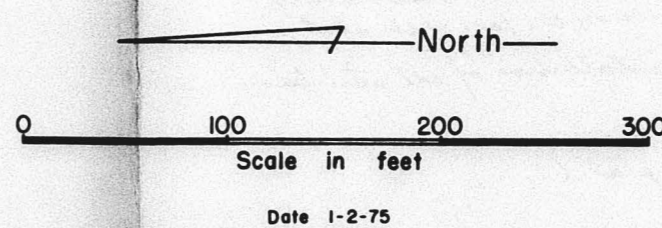
STATE OF KANSAS )  
COUNTY OF SEDGWICK ) ss.  
This is to certify that this instrument was filed for record in the Register of Deeds Office at \_\_\_\_\_ A.M.-P.M. on the \_\_\_\_\_ day of \_\_\_\_\_, 1975.  
Register of Deeds  
Betty F. McCurt  
Deputy



Vicinity Map  
Scale 1" = 2000'



74-100 Approved subject to conditions as listed on back. See letter dated 5-16-75



Preliminary Plat  
**Fountain Hills Addition**

Reiss and Goodness Engineers  
2160 E. Douglas Wichita-Kansas  
1975

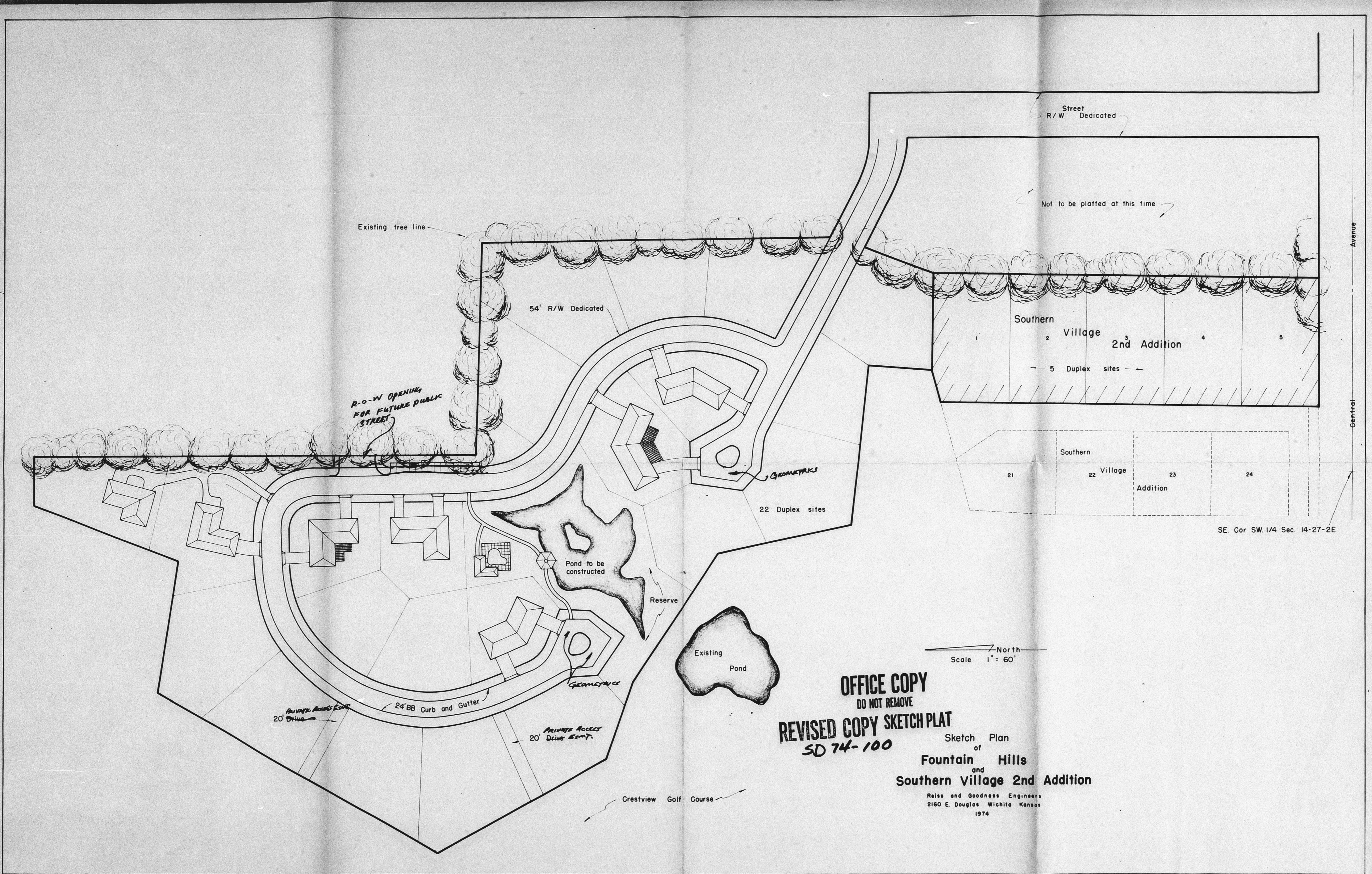
OFFICE COPY  
DO NOT REMOVE  
PRELIMINARY PLAT  
SD 74-100

Reserve A is for construction of a pond utilities and common open space.  
Reserve B is for construction of utilities, drainage and maintenance of trees  
Reserve C is for construction of private drive for access to lot 1 block D, utilities, drainage and maintenance of trees

Streets will be 24' wide w/conc. curb and gutter and asphalt paving.

Topography survey was completed 8-23-74  
Based on U.S.G.S. datum

24 single family lots are to be platted.



**OFFICE COPY**  
 DO NOT REMOVE  
**REVISED COPY SKETCH PLAT**  
 SD 74-100  
 Sketch Plan  
 of  
**Fountain Hills**  
 and  
**Southern Village 2nd Addition**  
 Reiss and Goodness Engineers  
 2160 E. Douglas Wichita Kansas  
 1974

Scale 1" = 60'  
 North

SE. Cor. SW. 1/4 Sec. 14-27-2E