

E

OFFICE COPY
DO NOT REMOVE

FINAL PLAT SD 75-4

edgemoor park branch library addition wichita, sedgwick county, kansas

STATE OF KANSAS SS
COUNTY OF SEDGWICK

I, John J. Hall, Land Surveyor in said State and County, hereby certify that I have surveyed and platted "EDGEWOOD PARK BRANCH LIBRARY ADDITION", to Wichita, Sedgwick County, Kansas, and the accompanying plat is a true and correct exhibit of such survey, being described as a tract of land located in the Southeast Quarter of Section 19, Township 27 South, Range 1 East of the Sixth Principal Meridian, Sedgwick County, State of Kansas, being more particularly described as follows:

BEGINNING at the Northeast corner of Edgemoor Park, said corner being 40.00 feet South of the Northeast corner of the West Half of the Southeast Quarter of said Section 19.

THENCE S 0° 00' W on the East line of said Park, a distance of 280.00 feet; THENCE S 90° 00' W, parallel with the North line of said Park, a distance of 319.00 feet;

THENCE N 32° 00' W a distance of 45.50 feet to the Point of Curve, said curve to the right having a central angle of 10° 00' and a radius of 498.00 feet;

THENCE on said curve to the right, a distance of 78.54 feet to the Point of Tangency;

THENCE N 22° 00' W on the tangent of said curve, a distance of 19.14 feet to the Point of Curve, said curve to the left having a central angle of 16° 00' and a radius of 400.00 feet;

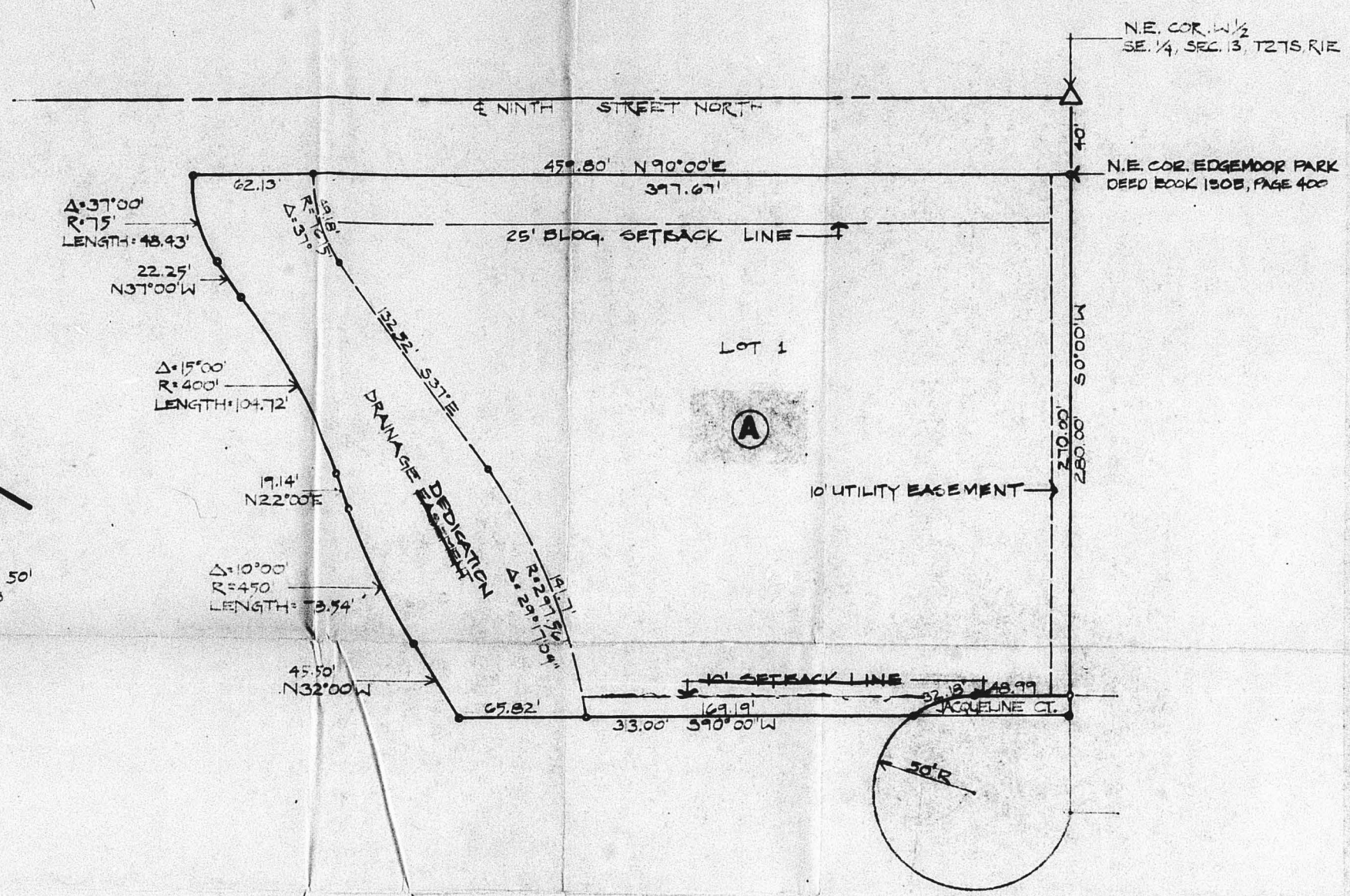
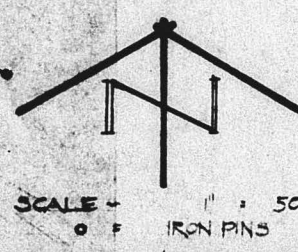
THENCE on said curve to the left, a distance of 104.72 feet to the Point of Tangency;

THENCE N 37° 00' W on the tangent of said curve, a distance of 22.25 feet to the Point of Curve, said curve to the right having a central angle of 37° 00' and a radius of 75.00 feet;

THENCE on said curve to the right, a distance of 48.43 feet to a Point on the North line of Edgemoor Park, said line being 40.00 feet South of and parallel with the North line of the West Half of said Southeast Quarter;

THENCE N 90° 00' E on said North line of Edgemoor Park a distance of 459.80 feet to the POINT OF BEGINNING.

John J. Hall L.S. #341



STATE OF KANSAS SS
COUNTY OF SEDGWICK

Know all men by these presents that the Wichita Public Library Board has caused the land described in the surveyor's certificate to be platted into a lot, block, and street to be known as "EDGEWOOD PARK BRANCH LIBRARY ADDITION", to Wichita, Sedgwick County, Kansas. The utility easement shown on the plat is hereby granted for construction and maintenance of all public utilities. The drainage easement is hereby granted for drainage purposes. The street is hereby dedicated to and for the use of the public.

Wichita Public Library Board
Samuel E. Spight Chairman
Lewie Farna Secretary

STATE OF KANSAS SS
COUNTY OF SEDGWICK

The foregoing instrument was acknowledged before me this _____ day of _____, 1975, by Samuel E. Spight, Chairman, and Lewie Farna, Secretary, of the Wichita Public Library Board, on behalf of the Board.

My Commission Expires _____ Notary Public

- SD 75-4 Approved subject to:
- The drainage easement on this plat shall be delineated as a drainage "dedication".
 - The applicant shall guarantee the construction of a storm sewer from the out-lot-ase on Jacqueline to the drainage dedication.
 - Contact the Soil Conservation Service.
 - The 10' setback line labeled on the plat shall be eliminated on the "AA" district requiring a 25' setback.
 - The applicant shall by letter request a street name change for Jacqueline in the block east of subject plat to Jacqueline Court to correspond to the correct name for that street indicated on the plat.
 - Make satisfactory arrangements and cooperate with the Street Control Office for the drainage improvement associated with subject property.

This plat of "EDGEWOOD PARK BRANCH LIBRARY ADDITION" has been submitted to and approved by the Wichita-Sedgwick County Metropolitan Area Planning Commission, Wichita, Kansas.

Dated this _____ day of _____, 1975.

Wichita-Sedgwick County Metropolitan Area Planning Commission
a. Resolutions to install the subject plat to the S. side of 9th St. around the out-lot-ase on Jacqueline.

Harlan R. Kamen
Robert A. Lakin

u. The balance of the out-lot-ase R.O.W. shall be dedicated to appropriate instrument and the applicant shall guarantee the paving of the out-lot-ase.

This plat approved and all dedications shown hereon, if any, accepted by the City Commission of the City of Wichita, Kansas.

I, Recording
Gary L. Porter Mayor
Donald C. Gislack City Clerk

This plat approved and all dedications shown hereon, if any, accepted by the Board of County Commissioners of Sedgwick County, Kansas.

Tom Spitt Chairman
John Hile Commissioner
Earl E. Rush Commissioner
ATTEST: George H. Pierce County Clerk

STATE OF KANSAS SS
COUNTY OF SEDGWICK

This is to certify that this instrument was filed for record in the Register of Deeds Office at _____ on the _____ day of _____, 1975.

Bette F. McCart Register of Deeds
Frank B. Gilbert Deputy
Entered on Transfer Records this _____ day of _____, 1975.
George H. Pierce County Clerk

