

V

OFFICE COPY
DO NOT REMOVE

VALLEY CENTER PUMP STATION

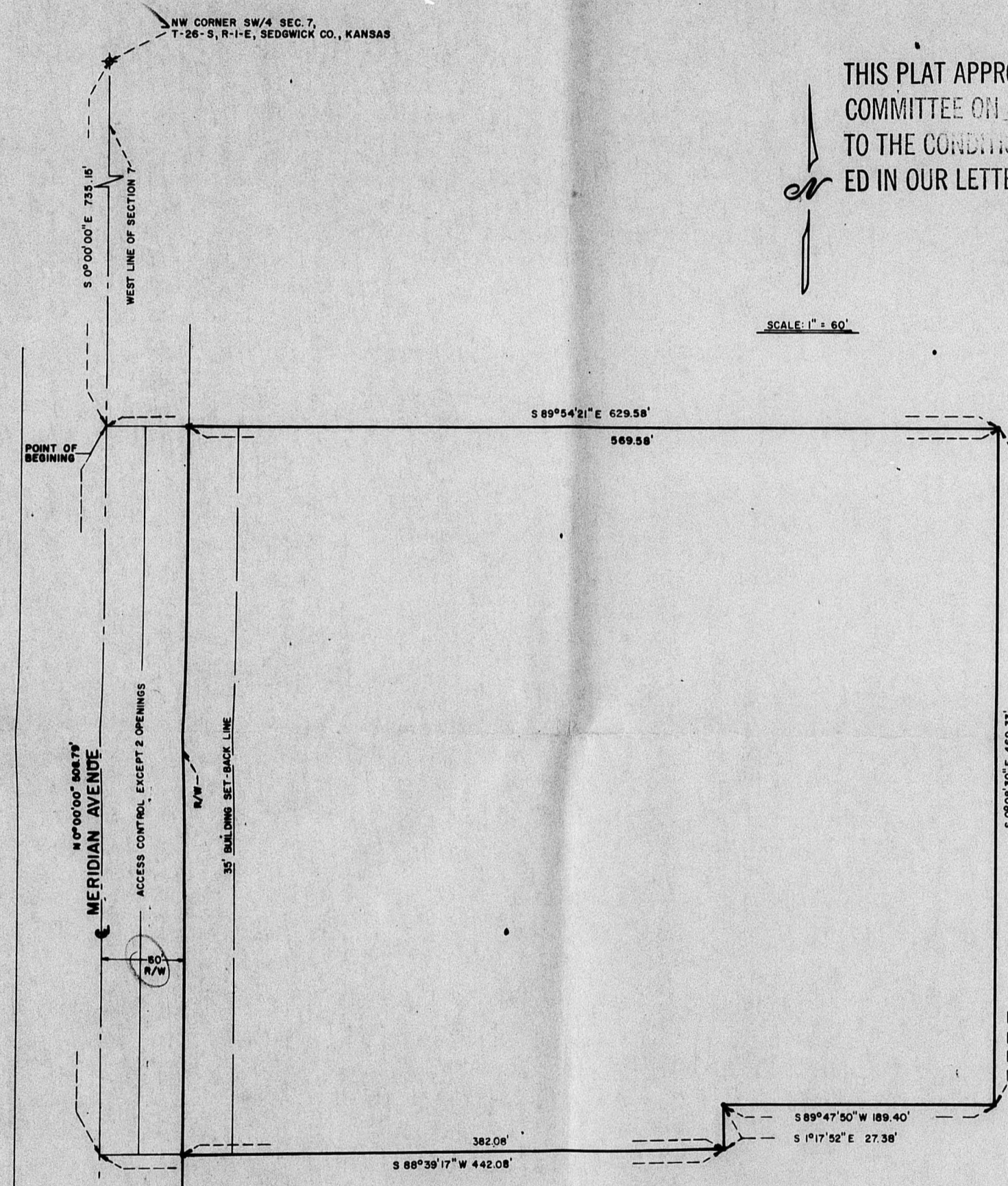
SEDGWICK COUNTY, KANSAS

S/D 85-19

THIS PLAT APPROVED BY THE SUBDIVISION
COMMITTEE ON 1-2-86 SUBJECT
TO THE CONDITIONS OF THE PLAT OUTLIN-
ED IN OUR LETTER DATED 1-3-86

FINAL PLAT

SCALE: 1" = 60'



State of Kansas S.S. I, Robert L. Blubaugh, P.E., surveyor in for said county and state, do hereby certify that the above tract known and platted as "Valley Center Pump Station," Sedgwick County, Kansas, was surveyed under my direction and that the accompanying plat is a true and correct exhibit of the property surveyed and described as follows: commencing at the NW corner of the SW/4 of Section 7, T-25-S, R-1-E, of the 6th P.M., Sedgwick County, Kansas, thence S0°00'00\"/>

Bearings based on the west line of Section 7 being north-south.
Thus described tract contains 7.135 acres.

Date December 4, 1985
Robert L. Blubaugh, P.E. No. 7647



Know all men by these presents that we, the undersigned, have caused the land described in the surveyors certificate to be platted into a lot and a street to be known as "Valley Center Pump Station," Sedgwick County, Kansas. The street is hereby dedicated to and for the use of the public. All abutter's rights of access to and from Meridian across the west line of the lot are granted to the appropriate governing body, provided however that this lot shall have access to Meridian at two points, as shall be determined by the appropriate engineer.

Continental Pipeline Company, a Delaware Corporation.
By: Guy G. Cartwright
District Manager

Need proof of this persons identity to sign

State of Oklahoma S.S. The foregoing instrument was acknowledged before me this 12 day of December, 1985, by Guy G. Cartwright, District Manager, on behalf of Continental Pipeline Company,
Donna A. Hays Notary Public

My App. Exp. August 10, 1986

This plat of "Valley Center Pump Station," Sedgwick County, Kansas, has been submitted to and approved by the Wichita-Sedgwick County Metropolitan Area Planning Commission, Wichita, Kansas, dated this day of 1985.

Wichita-Sedgwick County Metropolitan Area Planning Commission
Chairman
William J. Goebel
Secretary
Michael E. Lindebak

This plat approved and all dedications shown hereon accepted by the Board of Commissioners of the City of Wichita, Kansas, this day of 1985.

Mayor
R. C. Brown
City Clerk
Donald C. Giesick

This plat approved and all dedications shown hereon accepted by the Board of Commissioners of Sedgwick County, Kansas, this day of 1985.

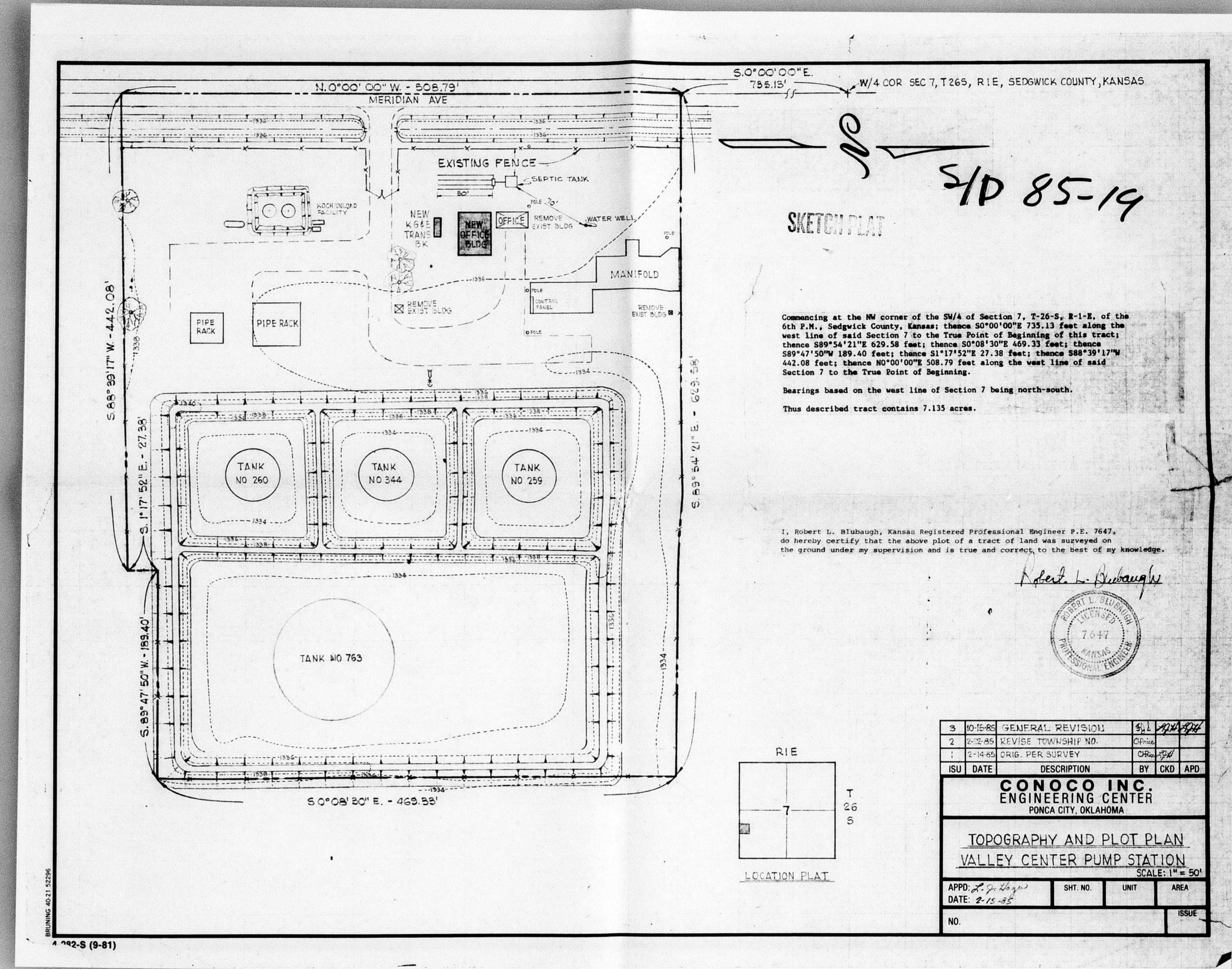
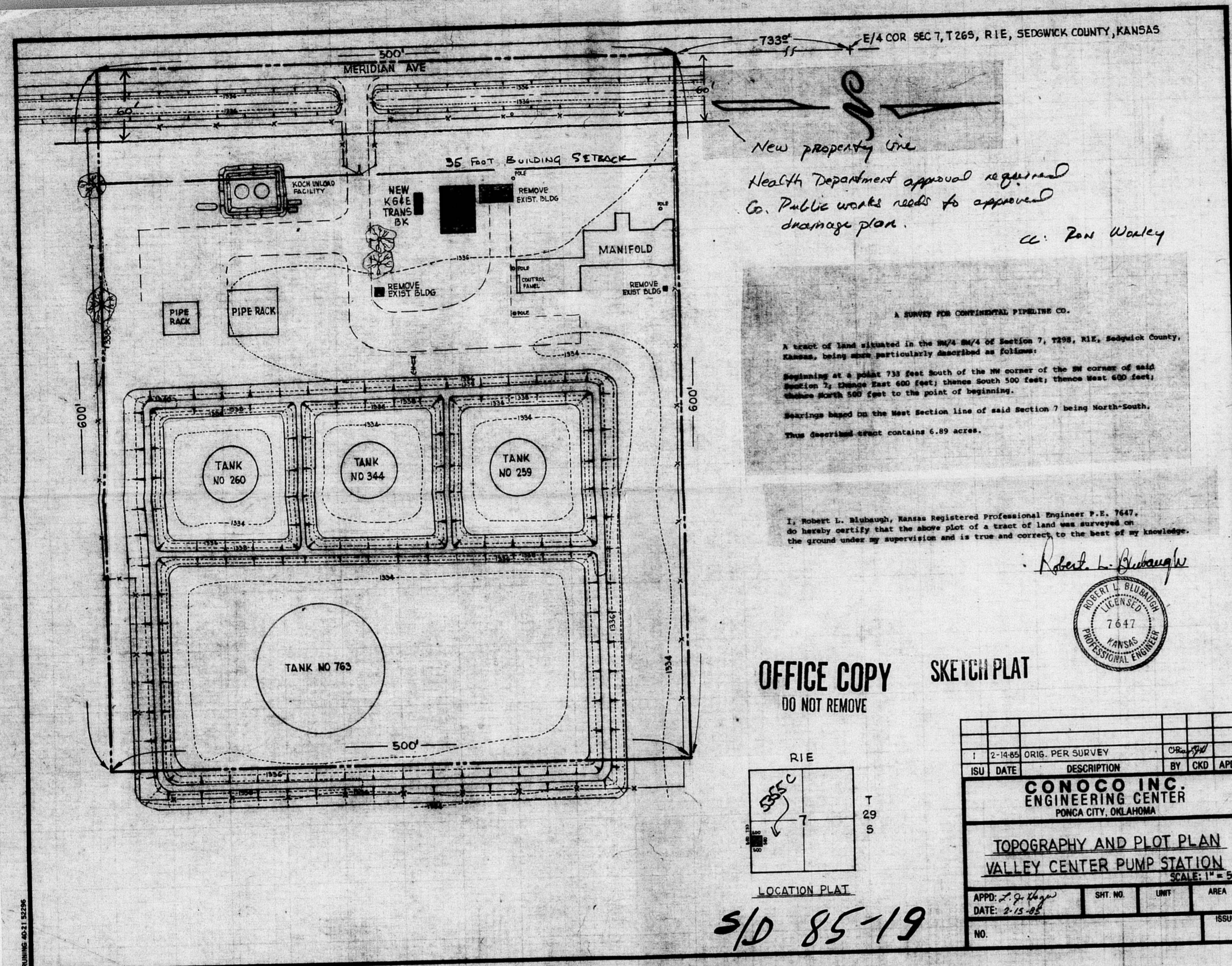
Chairman
Donald E. Gregg
Commissioner
Bernard A. Hentzen
Commissioner
Tom Scott
County Clerk
Don Wright

Entered on transfer record this day of 1985.

State of Kansas S.S. This is to certify that this plat has been filed for record in the office of the Register of Deeds, this day of 1985, at o'clock M. and is duly recorded.

Register of Deeds
Fat Kettler
Deputy
Ed Hess

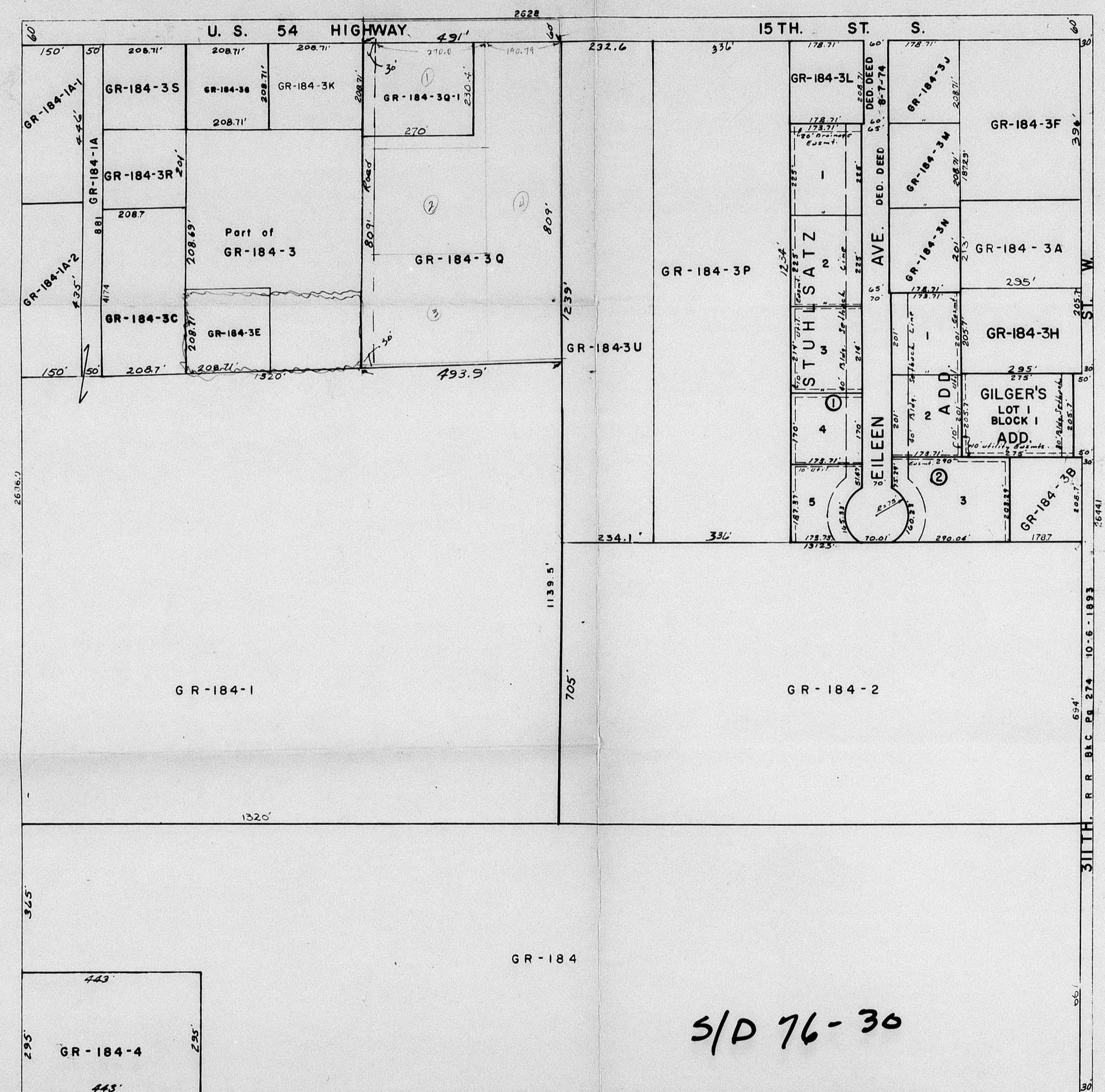




209
201
207
204
202
203
205
206
208
210
211
212
213
214
215
216
217
218
219
220
221
222
223
224
225
226
227
228
229
230
231
232
233
234
235
236
237
238
239
240
241
242
243
244
245
246
247
248
249
250
251
252
253
254
255
256
257
258
259
260
261
262
263
264
265
266
267
268
269
270
271
272
273
274
275
276
277
278
279
280
281
282
283
284
285
286
287
288
289
290
291
292
293
294
295
296
297
298
299
300
301
302
303
304
305
306
307
308
309
310
311
312
313
314
315
316
317
318
319
320
321
322
323
324
325
326
327
328
329
330
331
332
333
334
335
336
337
338
339
340
341
342
343
344
345
346
347
348
349
350
351
352
353
354
355
356
357
358
359
360
361
362
363
364
365
366
367
368
369
370
371
372
373
374
375
376
377
378
379
380
381
382
383
384
385
386
387
388
389
390
391
392
393
394
395
396
397
398
399
400
401
402
403
404
405
406
407
408
409
410
411
412
413
414
415
416
417
418
419
420
421
422
423
424
425
426
427
428
429
430
431
432
433
434
435
436
437
438
439
440
441
442
443
444
445
446
447
448
449
450
451
452
453
454
455
456
457
458
459
460
461
462
463
464
465
466
467
468
469
470
471
472
473
474
475
476
477
478
479
480
481
482
483
484
485
486
487
488
489
490
491
492
493
494
495
496
497
498
499
500
501
502
503
504
505
506
507
508
509
510
511
512
513
514
515
516
517
518
519
520
521
522
523
524
525
526
527
528
529
530
531
532
533
534
535
536
537
538
539
540
541
542
543
544
545
546
547
548
549
550
551
552
553
554
555
556
557
558
559
560
561
562
563
564
565
566
567
568
569
570
571
572
573
574
575
576
577
578
579
580
581
582
583
584
585
586
587
588
589
590
591
592
593
594
595
596
597
598
599
600
601
602
603
604
605
606
607
608
609
610
611
612
613
614
615
616
617
618
619
620
621
622
623
624
625
626
627
628
629
630
631
632
633
634
635
636
637
638
639
640
641
642
643
644
645
646
647
648
649
650
651
652
653
654
655
656
657
658
659
660
661
662
663
664
665
666
667
668
669
670
671
672
673
674
675
676
677
678
679
680
681
682
683
684
685
686
687
688
689
690
691
692
693
694
695
696
697
698
699
700
701
702
703
704
705
706
707
708
709
710
711
712
713
714
715
716
717
718
719
720
721
722
723
724
725
726
727
728
729
730
731
732
733
734
735
736
737
738
739
740
741
742
743
744
745
746
747
748
749
750
751
752
753
754
755
756
757
758
759
760
761
762
763
764
765
766
767
768
769
770
771
772
773
774
775
776
777
778
779
780
781
782
783
784
785
786
787
788
789
790
791
792
793
794
795
796
797
798
799
800
801
802
803
804
805
806
807
808
809
810
811
812
813
814
815
816
817
818
819
820
821
822
823
824
825
826
827
828
829
830
831
832
833
834
835
836
837
838
839
840
841
842
843
844
845
846
847
848
849
850
851
852
853
854
855
856
857
858
859
860
861
862
863
864
865
866
867
868
869
870
871
872
873
874
875
876
877
878
879
880
881
882
883
884
885
886
887
888
889
890
891
892
893
894
895
896
897
898
899
900
901
902
903
904
905
906
907
908
909
910
911
912
913
914
915
916
917
918
919
920
921
922
923
924
925
926
927
928
929
930
931
932
933
934
935
936
937
938
939
940
941
942
943
944
945
946
947
948
949
950
951
952
953
954
955
956
957
958
959
960
961
962
963
964
965
966
967
968
969
970
971
972
973
974
975
976
977
978
979
980
981
982
983
984
985
986
987
988
989
990
991
992
993
994
995
996
997
998
999
1000

NE 1/4 SEC. 36. TWP. 27 S. R. 4 W.

GR 141



S/D 76-30

THIS SHEET PREPARED UNDER SUPERVISION OF
GEORGE PIERCE, SEDGWICK COUNTY CLERK



7

S/P 26-30

SCALE - 1" = 200 FEET

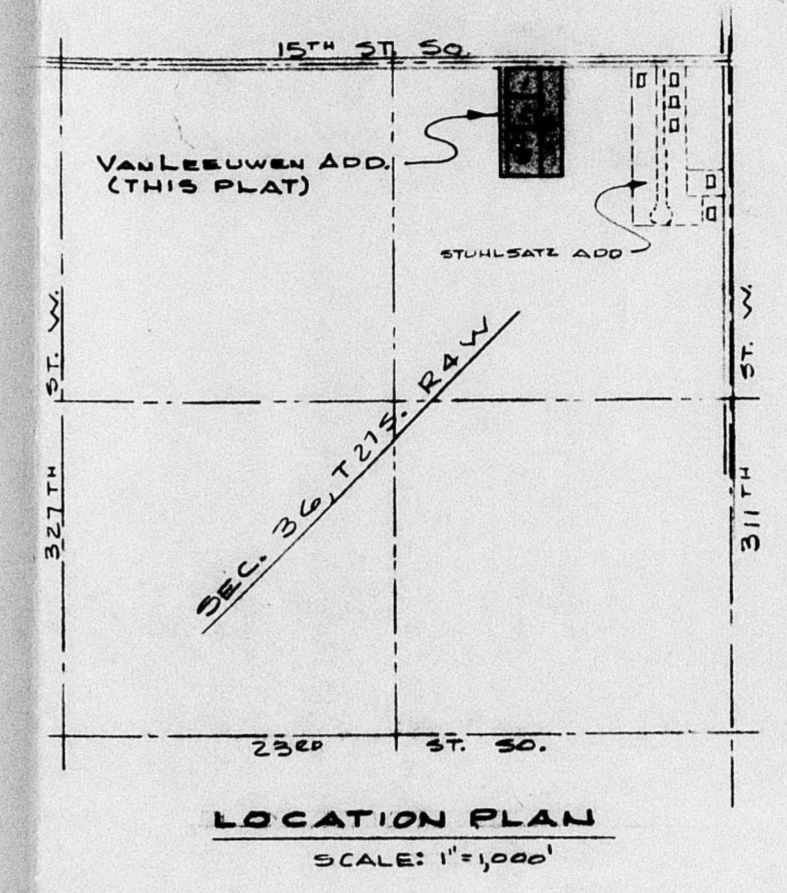
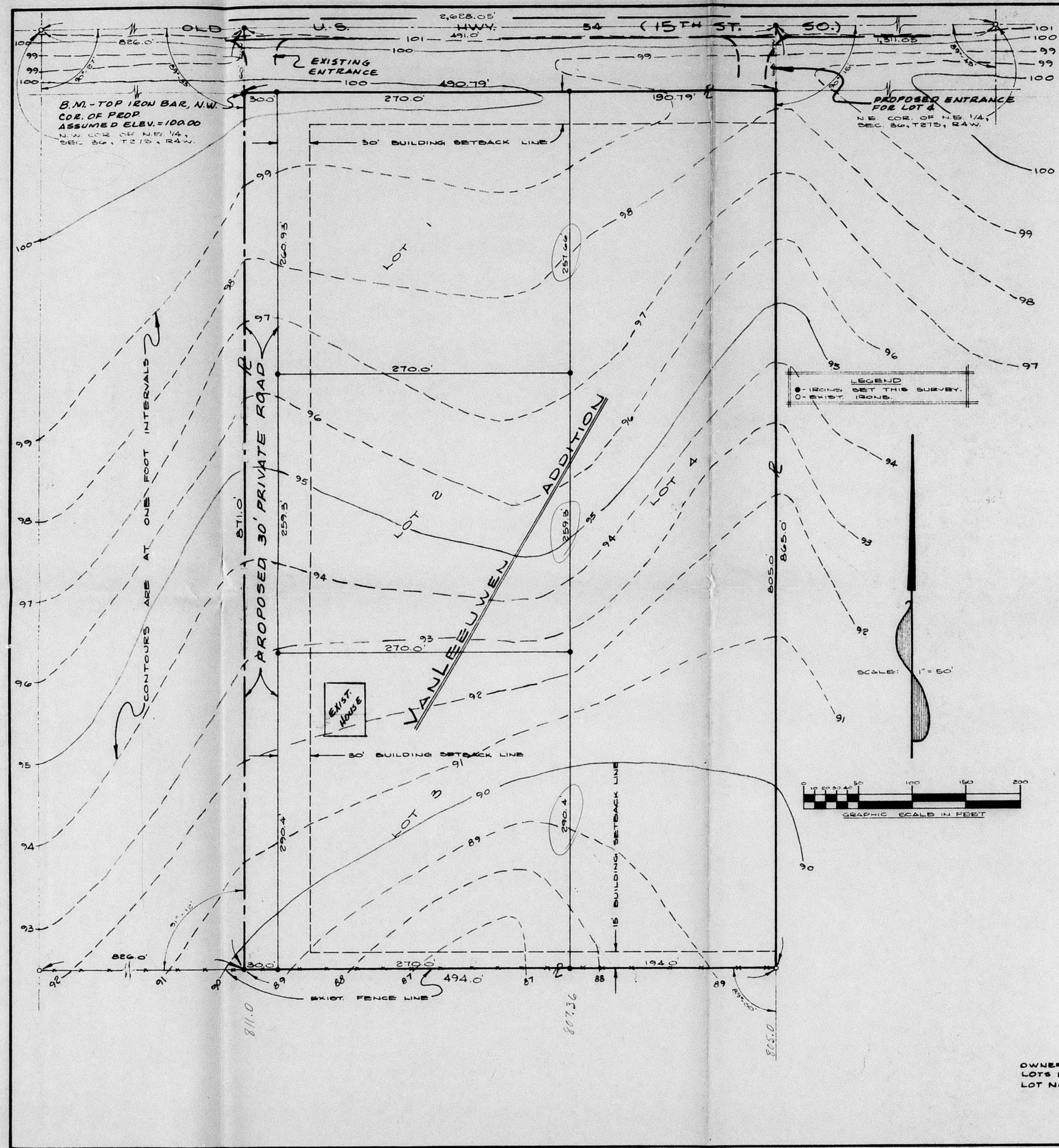


WICHITA-SEDGWICK COUNTY METROPOLITAN AREA PLANNING COMMISSION-KG&E, THE ELECTRIC COMPANY

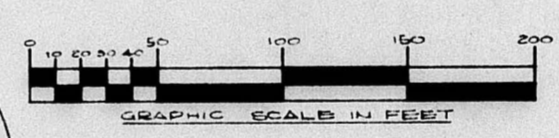
THE PREPARATION OF THIS PHOTO WAS CO-SPONSORED BY THE WSCMAPC AND KG&E, THE ELECTRIC COMPANY

PREPARED BY
WESTERN AIR MAPS, INC.

3445



- REQUIREMENTS BY OWNER:**
- 1- OBTAIN PERCOLATION TESTS FOR SEPTIC TANK SYSTEMS.
 - 2- CERTIFICATE BY AN ATTY. THAT FEE TITLE IS VESTED IN OWNERS.
 - 3- CERTIFICATE THAT ALL TAXES DUE FOR 1975 & PRIOR YRS. ARE PAID.
 - 4- FOR PRIVATE ROAD, SUBMIT ASSURANCE TO CO. ENGR. ON MAINTENANCE, TO BE IN CONFORMITY W/ COUNTY STANDARDS.



S/D 76-30

**SKETCH
PRELIMINARY PLAT
VAN LEEUWEN ADDITION**

SKETCH PLAT
OFFICE COPY
DO NOT REMOVE

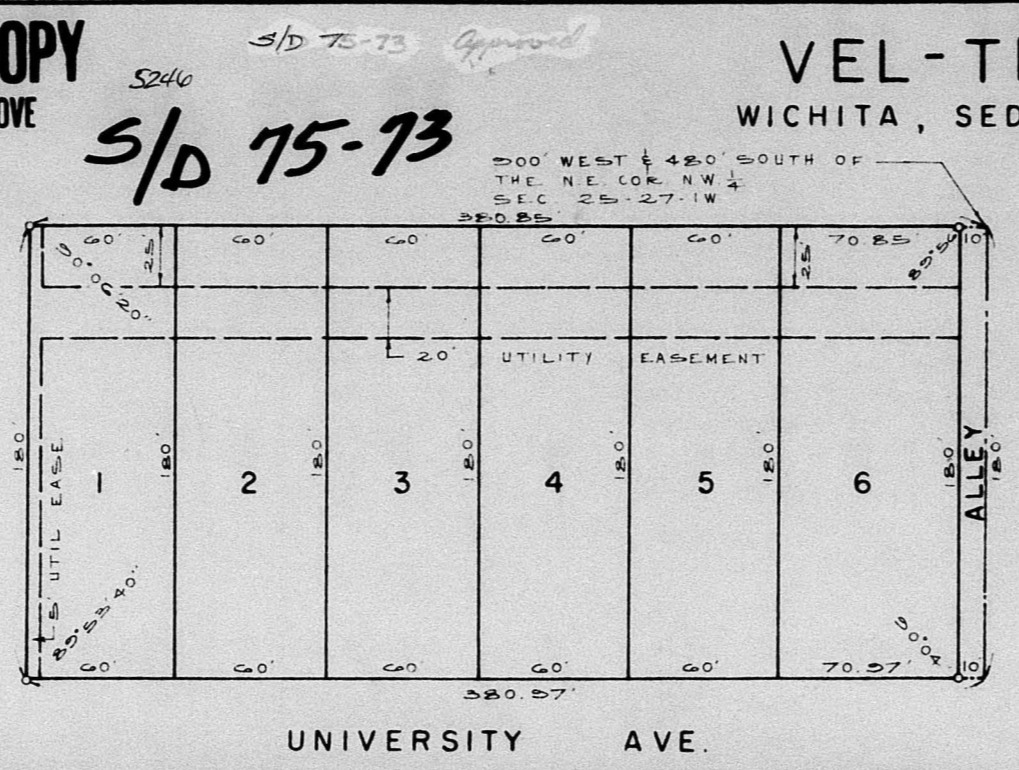
OWNERS & PLATTORS:
LOTS 1, 2 & 4: MAX VAULEUWEN
LOT NO. 3: MICKEY L. SMITH

SURVEYED & PLATTED BY:
D. L. WINFREY, P.E.
RT. #1 - GODDARD, MS. 39052

APRIL 5, 1976

OFFICE COPY
DO NOT REMOVE
FINAL PLAT

Handwritten:
University
Kessler



State of Kansas, County of Sedgwick, SS.

I, Kenneth O. Taylor, Civil Engineer in said State and County, do hereby certify that I have surveyed and platted "VEL-TEL ADDITION", Wichita, Sedgwick County, Kansas and that the accompanying plat is a true and correct exhibit of said survey described as follows: Commencing at the NE corner of the NW 1/4 of Section 25, T17S, R1W of the 6th P.M., Sedgwick County, Kansas; thence west on the north line of said NW 1/4, 900 feet; thence south parallel to the east line of said NW 1/4, 480 feet to a point of beginning; thence continuing south parallel to the east line of said NW 1/4, 180 feet to the north line of University Avenue; thence west along the north line of said University Avenue, 380.97 feet; thence north at an interior angle of 89°53'40", 180 feet; thence east 380.85 feet to the point of beginning.

Kenneth O. Taylor, Civil Engineer

Now all men by these presents that A. & R. Contractors, Inc., by Eldon Terrel, President, has caused the land described in the Civil Engineer's certificate to be platted into lots and an alley to be known as "VEL-TEL ADDITION", Wichita, Sedgwick County, Kansas. Utility easements as indicated on the plat are hereby granted for the construction and maintenance of all public utilities. The alley is hereby dedicated to and for the use of the public.

A. & R. Contractors, Inc.

Eldon Terrel, President
Art Vesch, Secretary

State of Kansas, County of Sedgwick, SS.

Be it remembered that on this _____ day of _____, 19____, before me, a notary public in and for the County and State aforesaid, came Eldon Terrel, President of A. & R. Contractors, Inc., a corporation, to me personally known to be the same person who executed the within instrument as President of said corporation, and such person duly acknowledged the execution of same as President, for and on behalf of, and as the act and deed of said corporation. In testimony whereof, I have hereunto set my hand and affixed my official seal the day and year above written.

_____, Notary Public

My Commission expires: _____

VEL-TEL ADDITION WICHITA, SEDGWICK COUNTY, KANSAS

40 75-73 Approved subject to:

A. Accurate the extension of sanitary sewer to corner Lot 3.
B. Accurate the extension of water to corner all lots.

Know all men by these presents that Air Capitol Savings Association, by _____, mortgagee of the land described in the ADDITION", Wichita, Sedgwick County, Kansas.

2. Accurate the extension of a sidewalk adjacent to the North of University Ave. of University Ave.

ATTEST: D. Planning Commission Chairman: "David Boyquist"
E. Secretary: _____

See letter dated 8/3/75

State of Kansas, County of Sedgwick, SS.

Be it remembered, that on this _____ day of _____, 19____, before me the undersigned, a notary public in and for the County and State aforesaid, came _____ of Air Capitol Savings Association, a corporation, to me personally known to be the same person who executed the within instrument as _____ of said corporation, and such person duly acknowledged the execution of same as _____ for and on behalf of, and as the act and deed of said corporation. In testimony whereof, I have hereunto set my hand and affixed my official seal the day and year above written.

_____, Notary Public

My Commission expires: _____

This plat of "VEL-TEL ADDITION", Wichita, Sedgwick County, Kansas has been submitted to and approved by the Wichita-Sedgwick County Metropolitan Area Planning Commission, Wichita, Kansas.

Dated this _____ day of _____, 19____.

Wichita-Sedgwick County Metropolitan Area Planning Commission

By: _____ Chairman
Robert A. Lakin Secretary

This plat approved and all dedications shown hereon accepted by the Board of City Commissioners of the City of Wichita, Kansas, this _____ day of _____, 19____.

_____, Mayor
Connie A. Peters City Clerk

This plat approved and all dedications shown hereon accepted by the Board of County Commissioners of Sedgwick County, Kansas, this _____ day of _____, 19____.

_____, Chairman
Earl E. Rush Commissioner
Tom Scott Commissioner

ATTEST: John Hale, Commissioner
George Pierce, County Clerk

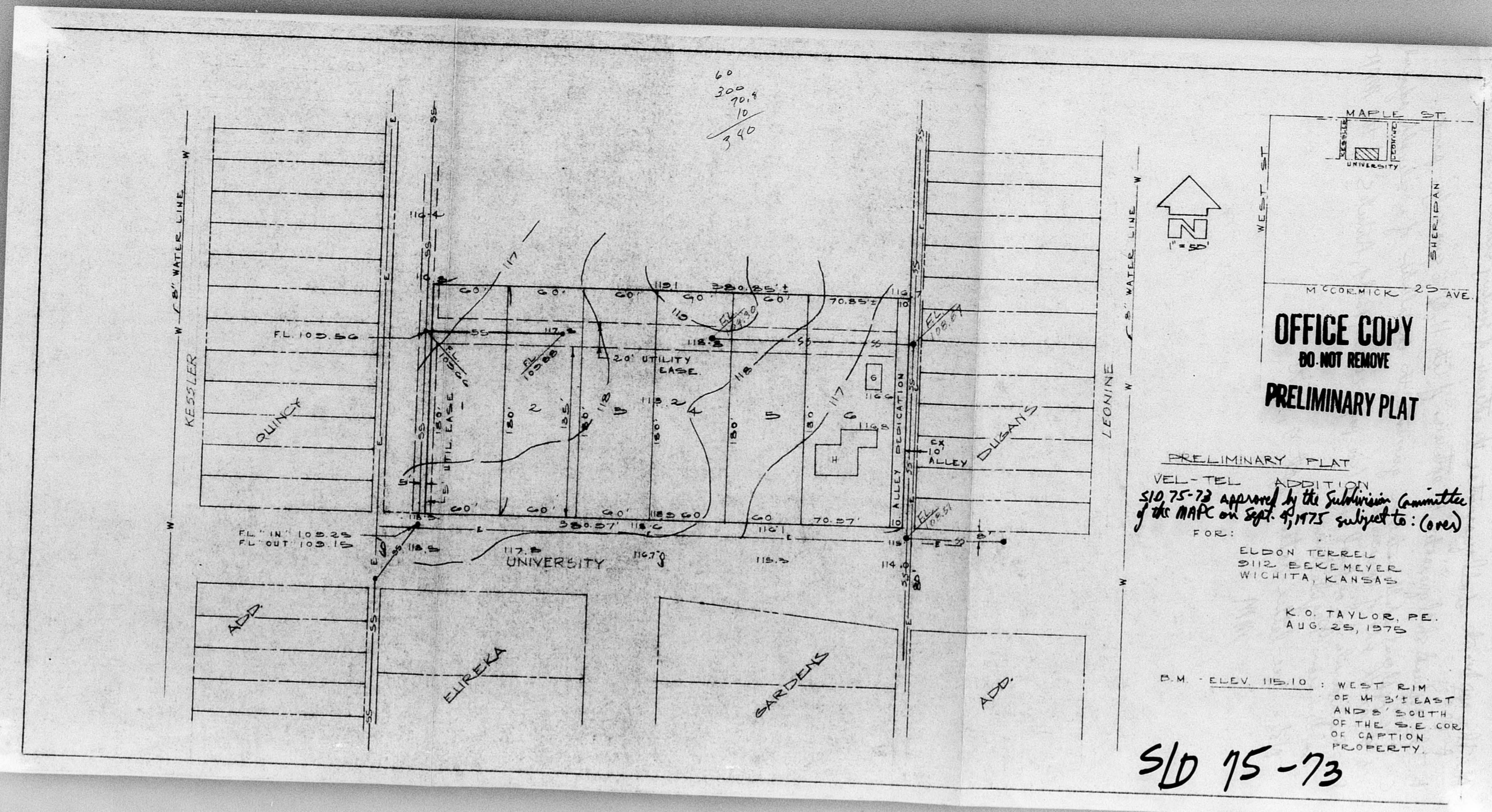
Entered on transfer record this _____ day of _____, 19____.

_____, County Clerk
George Pierce

State of Kansas, County of Sedgwick, SS.

This is to certify that this instrument was filed for record in the Register of Deeds Office, at _____ o'clock _____ M., on the _____ day of _____, 19____.

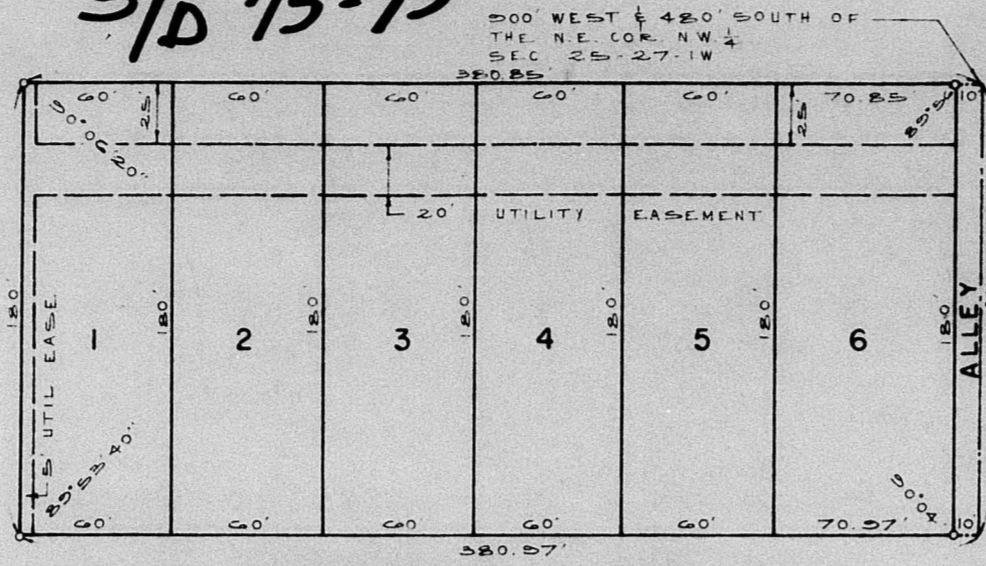
_____, Register of Deeds
Pearl B. Gilbert, Deputy



OFFICE COPY
DO NOT REMOVE
FINAL PLAT

S/D 75-73
S/D 75-73

VEL-TEL ADDITION
WICHITA, SEDGWICK COUNTY, KANSAS



UNIVERSITY AVE.

State of Kansas, County of Sedgwick, SS.

I, Kenneth G. Taylor, Civil Engineer in said State and County, do hereby certify that I have surveyed and platted "VEL-TEL ADDITION", Wichita, Sedgwick County, Kansas and that the accompanying plat is a true and correct exhibit of said survey described as follows: Commencing at the NE corner of the NW 1/4 of Section 25, T27N, R1W of the 6th P.M., Sedgwick County, Kansas; thence west on the north line of said NW 1/4, 900 feet; thence south parallel to the east line of said NW 1/4, 480 feet to a point of beginning; thence continuing south parallel to the east line of said NW 1/4, 180 feet to the north line of University Avenue; thence west along the north line of said University Avenue, 180.97 feet; thence north at an interior angle of 89°53'40", 180 feet; thence east 380.85 feet to the point of beginning.

Kenneth G. Taylor
Civil Engineer

Know all men by these presents that A. & R. Contractors, Inc., by Eldon Terrel, President, has caused the land described in the Civil Engineer's certificate to be platted into lots and an alley to be known as "VEL-TEL ADDITION", Wichita, Sedgwick County, Kansas. Utility easements as indicated on the plat are hereby granted for the construction and maintenance of all public utilities. The alley is hereby dedicated to and for the use of the public.

A. & R. Contractors, Inc.

ATTEST: Eldon Terrel, President
Art Vesich, Secretary

State of Kansas, County of Sedgwick, SS.

Be it remembered that on this day of 19 before me, a notary public in and for the County and State aforesaid, came Eldon Terrel, President of A. & R. Contractors, Inc., a corporation, to me personally known to be the same person who executed the within instrument as President of said corporation, and such person duly acknowledged the execution of same as President, for and on behalf of, and as the act and deed of said corporation. In testimony whereof, I have hereunto set my hand and affixed my official seal the day and year above written.

Notary Public

My Commission expires:

S/D 75-73 Approved subject to:

- A. Guarantee the extension of sanitary sewer to serve Lot 3.
- B. Guarantee the extension of water to serve all lots.
- C. Guarantee the installation of a sidewalk adjacent to the north side of University.
- D. Planning Commission Chairman: David Boyouth.
- E. Bonding...

Know all men by these presents that Air Capitol Savings Association, by Civil Engineer's certificate does hereby consent to the plating of "VEL-TEL ADDITION", Wichita, Sedgwick County, Kansas.

ATTEST:

State of Kansas, County of Sedgwick, SS.

Be it remembered, that on this day of 19 before me the undersigned, a notary public in and for the County and State aforesaid, came of Air Capitol Savings Association, a corporation, to me personally known to be the same person who executed the within instrument as of said corporation, and such person duly acknowledged the execution of same as for and on behalf of, and as the act and deed of said corporation. In testimony whereof, I have hereunto set my hand and affixed my official seal the day and year above written.

See letter dated 10/3/75

Notary Public

My Commission expires:

This plat of "VEL-TEL ADDITION", Wichita, Sedgwick County, Kansas has been submitted to and approved by the Wichita-Sedgwick County Metropolitan Area Planning Commission, Wichita, Kansas.

Dated this day of 19 Wichita-Sedgwick County Metropolitan Area Planning Commission
By: Marion A. Kamm, Chairman
Robert A. Lakin, Secretary

This plat approved and all dedications shown hereon accepted by the Board of City Commissioners of the City of Wichita, Kansas, this day of 19

Connie A. Peters, Mayor
Donald C. Giesick, City Clerk

This plat approved and all dedications shown hereon accepted by the Board of County Commissioners of Sedgwick County, Kansas, this day of 19

Earl E. Bush, Chairman
Tom Scott, Commissioner

ATTEST: John Hale, Commissioner
George Pierce, County Clerk

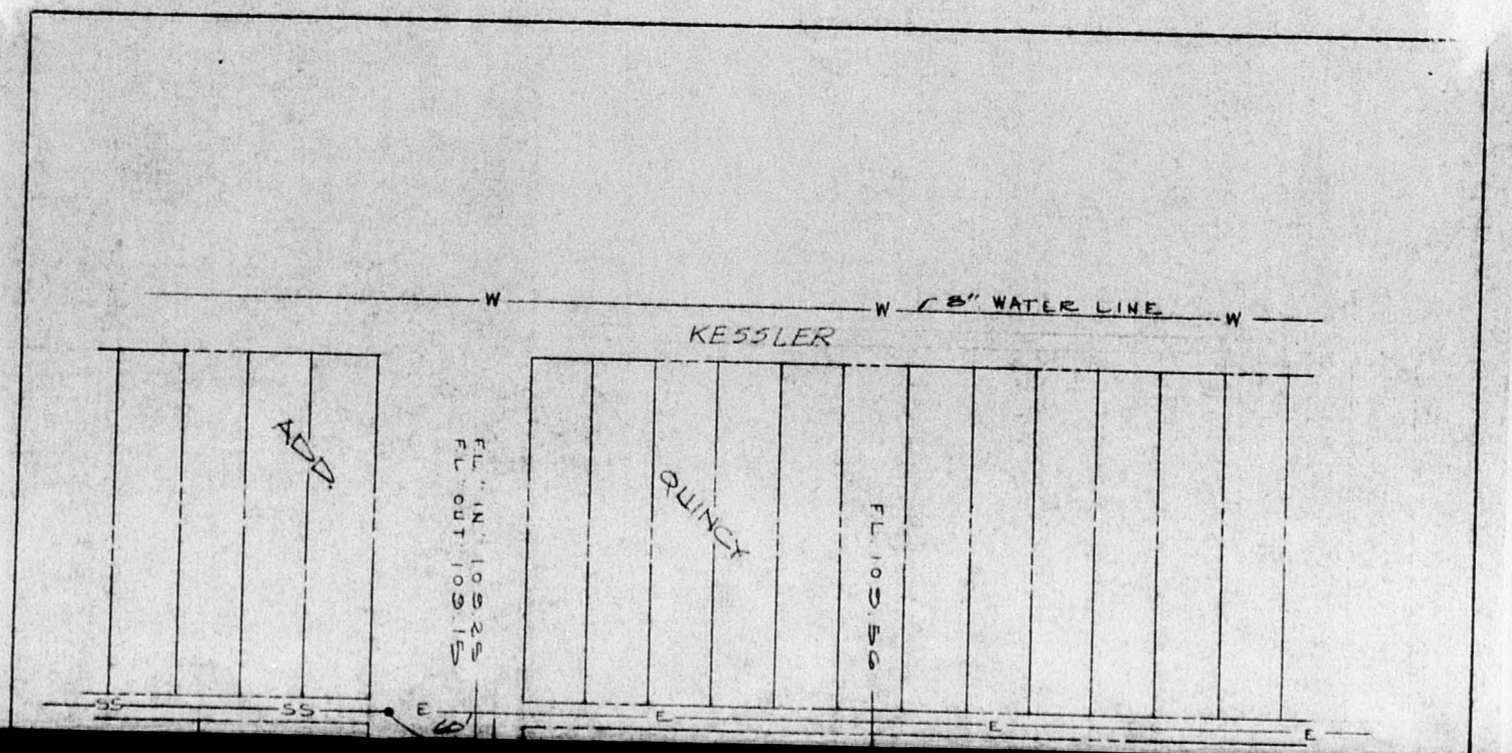
Entered on transfer record this day of 19
George Pierce, County Clerk

State of Kansas, County of Sedgwick, SS.

This is to certify that this instrument was filed for record in the Register of Deeds Office, at o'clock m., on the day of 19

Bette F. McCart, Register of Deeds
Pearl B. Gilbert, Deputy

A. The applicant shall guarantee the extension of sanitary sewer to serve subject property.
B. The applicant shall guarantee the extension of City H₂O to serve subj. prop.
C. The applicant shall install or guarantee the installation of a sidewalk adjacent to the north side of University.
D. Remittances for a final plat (see pages 20-25, Part 4, Articles of the MARC Subdivision Regulations).
Note: See letter dated Sept. 9, 1975
MM



S/D 97-88

FINAL PLAT OF
THE VILLAGE AT WATERFORD

AN ADDITION TO WICHITA, SEDGWICK COUNTY, KANSAS

**OFFICE COPY
DO NOT REMOVE**

THIS PLAT APPROVED BY THE SUBDIVISION COMMITTEE ON 9/11/87 SUBJECT TO THE CONDITIONS OF APPROVAL OUTLINED IN OUR LETTER DATED 9/11/87

I, Allen D. Lowry, a Land Surveyor in Kansas, do hereby certify that I have been in responsible charge of surveying and platting of "THE VILLAGE AT WATERFORD", an addition to Wichita, Sedgwick County, Kansas, into lots, streets, and reserves the same being accurately set forth in the accompanying plat and described as follows:

A replat of Block 4, Reserve C, Reserve D, and Reserve E, WATERFORD NORTH TRIGD, an addition to Wichita, Sedgwick County, Kansas.

All lots, reserves, easements, and building setbacks within the above described property are being vacated and replatted by virtue of KSA 12-512(b).

I hereby certify that the details of this plat are correct to the best of my knowledge and belief this _____ day of _____, 1987.

Allen D. Lowry, M.S. #755
Mid-Kansas Engineering Consultants, P.A.
3500 N. Rock Road, Building #800
Wichita, KS 67226

Know all men by these presents that we the undersigned property owners of the land as above set forth in the Land Surveyors Certificate, have caused the same to be surveyed and platted into lots, a block, and reserves, the same to be known as "THE VILLAGE AT WATERFORD", an addition to Wichita, Sedgwick County, Kansas. Easements for the construction and maintenance of public utilities and drainage, recreation, and private streets are hereby granted. Reserves A and B are planned for the use of landscaping, construction and maintenance of public utilities, drainage, recreation, and open space. It should be noted that there is a portion of Reserve A excepted from platting of public utilities. Reserve C is planned for construction and maintenance of public utilities, drainage, and private street. The reserves shall be owned and maintained by the Homeowners Association. The 5.00 foot maintenance easements are granted for access by the adjoining property owner for maintenance of their structures and a 2.00 foot roof overhang. *Reference platting of parking easement.*

LANDMARK COMMUNITIES, INC.

By: Elton V. Parsons, Vice-President

STATE OF KANSAS)
SEDGWICK COUNTY) SS:

Be it remembered that on this _____ day of _____, 1987, before me a Notary Public in and for said State and County, came Elton V. Parsons, Vice-President of Landmark Communities, Inc., to me personally known to be the same person who executed the foregoing instrument of writing and duly acknowledged the execution of the same. In testimony whereof I have hereunto set my hand and affixed my notarial seal the day and year above written.

_____, Notary Public

My Appointment Expires: _____

We, Bank IV, Wichita, National Association, mortgagees on the above described property, do hereby consent to the plat of "THE VILLAGE AT WATERFORD".

BANK IV, WICHITA, NATIONAL ASSOCIATION

By: J.J. Newman, Vice President

STATE OF KANSAS)
SEDGWICK COUNTY) SS:

Be it remembered that on this _____ day of _____, 1987, before me a Notary Public in and for said State and County, came J.J. Newman, Vice-President of Bank IV, Wichita, National Association, to me personally known to be the same person who executed the foregoing instrument of writing and duly acknowledged the execution of the same. In testimony whereof I have hereunto set my hand and affixed my notarial seal the day and year above written.

_____, Notary Public

My Appointment Expires: _____

This plat of "THE VILLAGE AT WATERFORD" has been submitted to and approved by the Wichita-Sedgwick County Metropolitan Area Planning Commission, Wichita, Kansas.

Dated this _____ day of _____, 1987.

WICHITA-SEDGWICK COUNTY METROPOLITAN AREA PLANNING COMMISSION

_____, Chairman

John Terry Moore

_____, Secretary

Marvin S. Krout

This plat approved and all dedications shown hereon, if any, accepted by the City Council of the City of Wichita, Kansas, this _____ day of _____, 1987.

By: _____, Mayor

Robert G. Knight

_____, Deputy City Clerk

Dele E. Kea

Entered on transfer record this _____ day of _____, 1987.

_____, County Clerk

Don Wright

STATE OF KANSAS)
SEDGWICK COUNTY) SS:

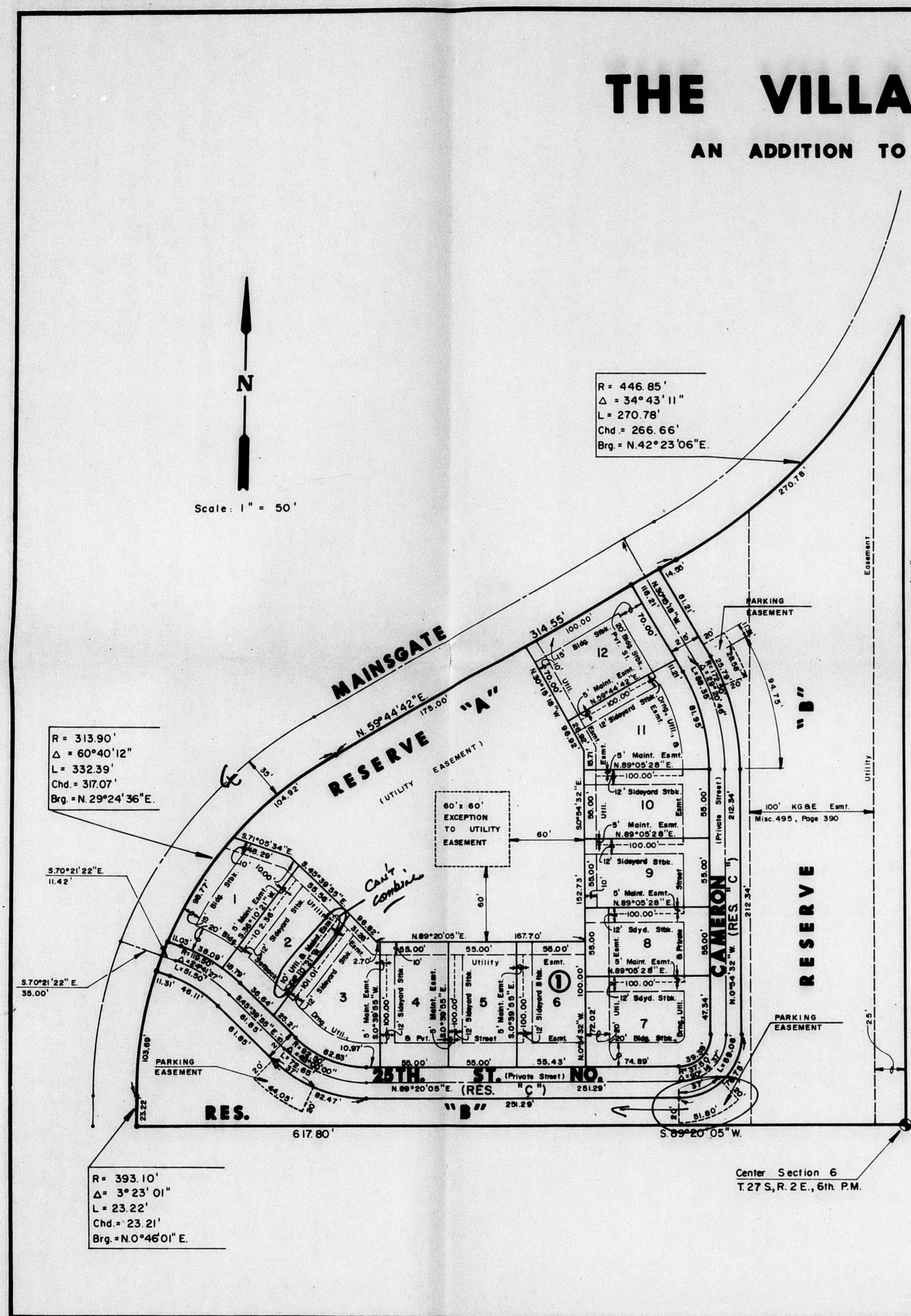
This is to certify that this instrument was filed for record in the Register of Deeds office this _____ day of _____, 1987.

_____, Register of Deeds

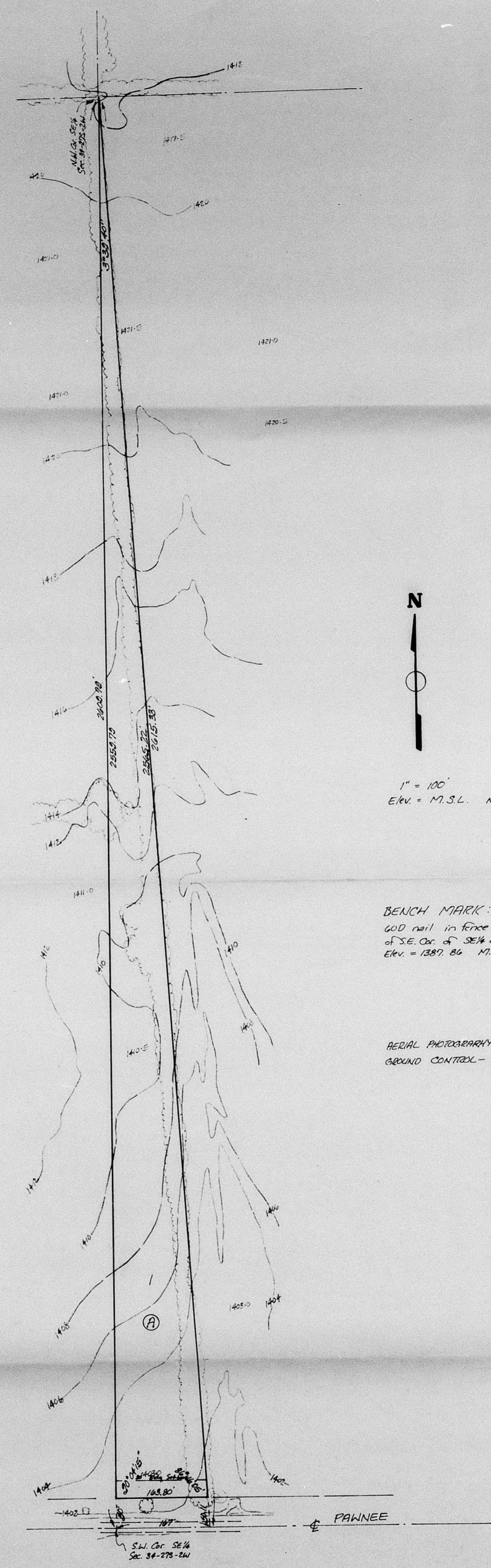
Pat Kettler

_____, Deputy

Ed Resa



Center Section 6
T.27 S., R. 2 E., 6th P.M.



N
 1" = 100'
 Elev. = M.S.L. NOV 1975

BENCH MARK: COUNTY
 600 nail in fence post 40 SE
 of SE. Cor. of SE 1/4 34-27-24
 Elev. = 1387.86 M.S.L.

AERIAL PHOTOGRAPHY - KLICERA 1975
 GROUND CONTROL - BAUGHMAN NOV 1975

SKETCH PLAT
 SKETCH PLAT
 VOHS ADDITION
 OFFICE COPY
 DO NOT REMOVE

Req. of N.W. Cor. of SE 1/4 34-27-24; -S14 to pt. 147
 E of S.W. Cor. of SE 1/4; -W 147; -N to top

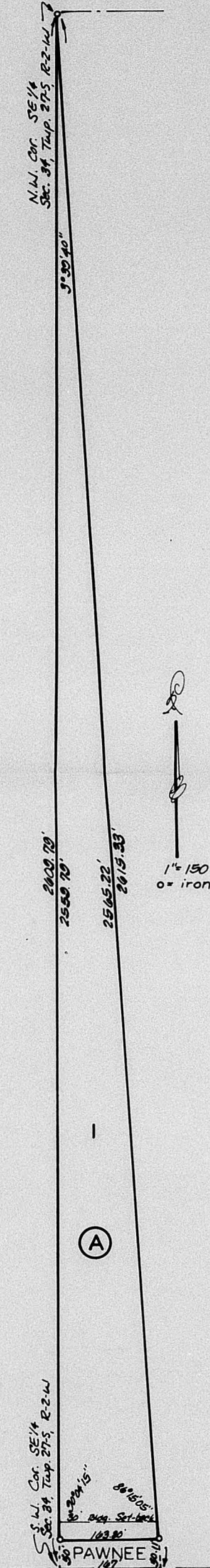
Edward G. Vohs

S/D 80-5

BAUGHMAN COMPANY, P.A. B. 2400

OFFICE COPY
DO NOT REMOVE FINAL PLAT
VOHS ADDITION
SEDGWICK COUNTY, KANSAS.

3/10 80-5



State of Kansas, ss. We, Baughman Company, P.A., Surveyors in and for said County and State do hereby certify that we have surveyed and platted "VOHS ADDITION" Sedgwick County, Kansas, and that the accompanying plat is a true and correct exhibit of the property surveyed described as beginning at the N.W. Corner of the S.E. 1/4 of Sec. 34, Twp. 27S, R. 2-W, Sedgwick County, Kansas; thence southerly to a point 167 feet east of the S.W. Corner of said S.E. 1/4; thence west 167 feet; thence north to beginning.

Baughman Company, P.A.
Date _____ Surveyor
William L. Barber

Know all men by these presents that we, the undersigned, have caused the land described in the surveyors certificate to be platted into a Lot, Block and Street to be known as "VOHS ADDITION", Sedgwick County, Kansas. The street is hereby dedicated to and for the use of the public.

Edward G. Vohs Patricia K. Vohs

State of Kansas, ss. The foregoing instrument was acknowledged before me this _____ day of _____, 1980, by Edward G. Vohs and Patricia K. Vohs, his wife.

My Comm. Exp. _____ Notary Public

State of Kansas, ss. This is to certify that this plat has been filed for record in the office of the Register of Deeds, this _____ day of _____, 1980, at _____ o'clock _____, and is duly recorded.

Register of Deeds
Deputy

This plat of "VOHS ADDITION", Sedgwick County, Kansas, has been submitted to and approved by the Wichita-Sedgwick County Metropolitan Area Planning Commission, Wichita, Kansas.

Dated this _____ day of _____, 1980.
Wichita-Sedgwick County Metropolitan Area Planning Commission.

Chairman
Secretary

This plat approved and all dedications shown hereon accepted by the Board of Commissioners of the City of Wichita, Kansas, this _____ day of _____, 1980.

Mayor
City Clerk

This plat approved and all dedications shown hereon accepted by the Board of Commissioners, Sedgwick County, Kansas, this _____ day of _____, 1980.

Chairman
Commissioner
Commissioner
County Clerk

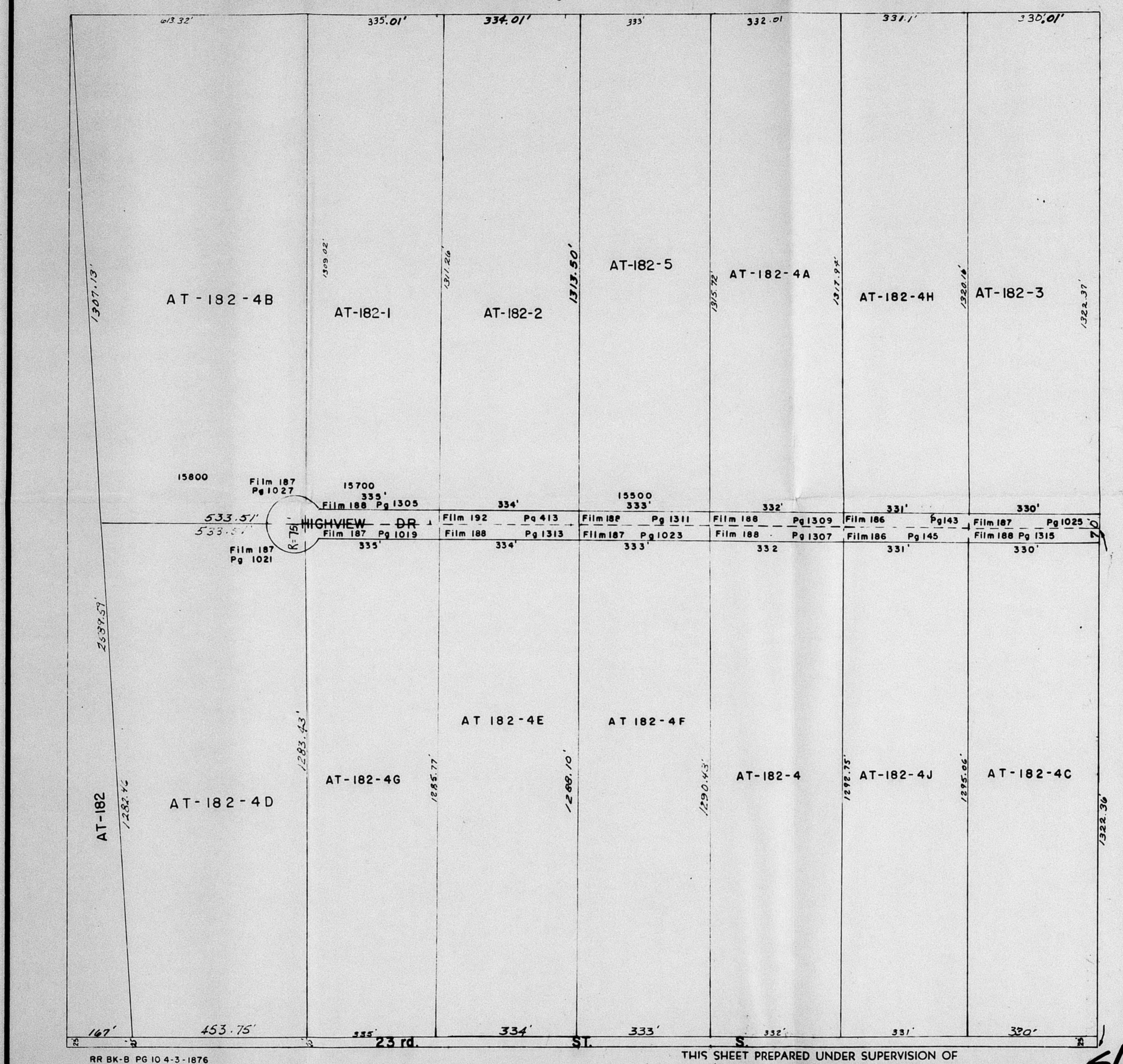
Entered on trans-Per record, this _____ day of _____, 1980.

County Clerk

Vols Add.

AT
135

S.E. 1/4 SEC. 34, TWP. 27S, R. 2W.



RR BK-B PG 10 4-3-1876

THIS SHEET PREPARED UNDER SUPERVISION OF
SEDGWICK COUNTY CLERK

S/P 80-5