

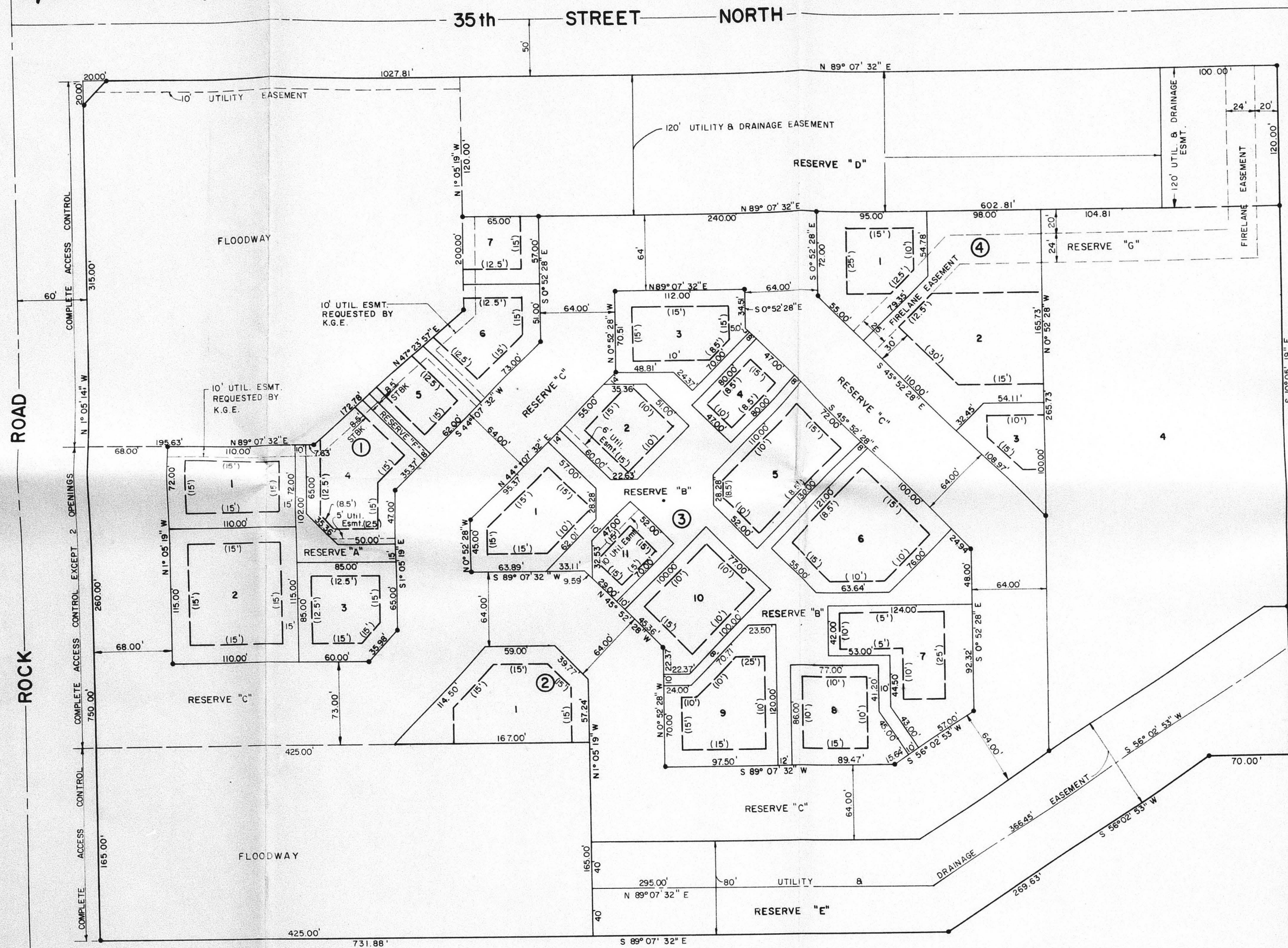
S

OFFICE COPY  
DO NOT REMOVE  
REVISED COPY.

S/D 80-84

# FINAL PLAT OF STONEHEDGE

AN ADDITION TO WICHITA, SEDGWICK COUNTY, KANSAS



Scale: 1" = 50'  
MIN. PAD ELEV. = 202.0  
CITY OF WICHITA DATUM

**LEGEND:**  
\* iron  
- bldg. stba.  
# lot no.  
③ blk. no.  
① bldg. stba. width

I, Kenneth H. Reington, a Civil Engineer in Kansas, do hereby certify that I have been in responsible charge of surveying and plating of "Stonehedge", an addition to Wichita, Sedgwick County, Kansas into lots, blocks, floodways and reserves, the same being accurately set forth in the accompanying plat and described as follows:

A replat of lot 1, Block 1, Comtara Business Park, an addition to Wichita, Sedgwick County, Kansas.

Previous access rights granted in the plat of "Comtara Business Park" are hereby vacated by virtue of K.S.A. 12-512b. I hereby certify that the details of this plat are correct to the best of my knowledge and belief this \_\_\_\_\_ day of \_\_\_\_\_, 1980.

Kenneth H. Reington  
VAN BUREN-HAZARD-STALLINS  
Architects-Engineers  
260 N. Rock Road Suite 250  
Wichita, Kansas 67206

Know all men by these presents that as the undersigned property owners of the land as above set forth in the Civil Engineer's Certificate have caused the same to be surveyed and platted into lots, blocks, floodways and reserves, the same to be known as "Stonehedge", an addition to Wichita, Sedgwick County, Kansas, easements for the construction and maintenance of public utilities and drainage, as indicated on the accompanying plat are hereby granted. Reserves "A", "B", "C", and "D" are platted for construction and maintenance of public utilities, sidewalks and open space. Reserve "E" is platted for the use of sidewalks, fire lanes, construction and maintenance of public utilities, parking, open space and private drives. Reserves "F" and "G" are platted for drainage and construction and maintenance of public utilities. Reserve "H" is platted for fire lane easements. All reserves shall be owned and maintained by the owners of the lots within the subdivision (except lot 4, Block 1). Floodways shall be the responsibility of the owners of the property in the subdivision until such time as the governing body exercising jurisdiction elects to assume the responsibility for maintenance and improvement of the drainage, provided further, that no structure shall be constructed on or within said floodway, nor shall any fill, change of grade, creation of channel or other work be carried on without the permission of the Wichita-Sedgwick County Flood Control Office or their successors in office. All egress rights of access to or from Rock Road over and across the east line of Rock Road are hereby granted to the City of Wichita, Kansas, provided, however, that Reserve "C" shall have access to Rock Road at two locations and lot 1, Block 1, shall have access to Rock Road at two locations except over the south 200 feet of said lot 1, said locations to be determined by the Engineer of the City of Wichita. Minimum building pad elevation shall be 202.0, City of Wichita Datum.

By: Robert K. Fox  
Attorney in fact for Wichita Development Company

STATE OF KANSAS  
COUNTY OF SEDGWICK

Be it remembered that on this \_\_\_\_\_ day of \_\_\_\_\_, 1980, before me, a Notary Public in and for said State and County, came the Wichita Development Company, by Robert K. Fox, Attorney in fact for Wichita Development Company, to be personally known to be the same person who executed the foregoing instrument of writing and duly acknowledged the execution of the same. In testimony whereof I have hereunto set my hand and affixed my notarial seal the day and year above written.

Carolyn E. Owen  
Notary Public

My Appointment Expires: \_\_\_\_\_

Be the Citibank, N.A., New York City, New York mortgagees on the above described property do hereby consent to the plat of "Stonehedge"

The Citibank, N.A., New York City, New York

By: Robert K. Fox  
Attorney in fact for Citibank, N.A.

STATE OF KANSAS  
COUNTY OF SEDGWICK

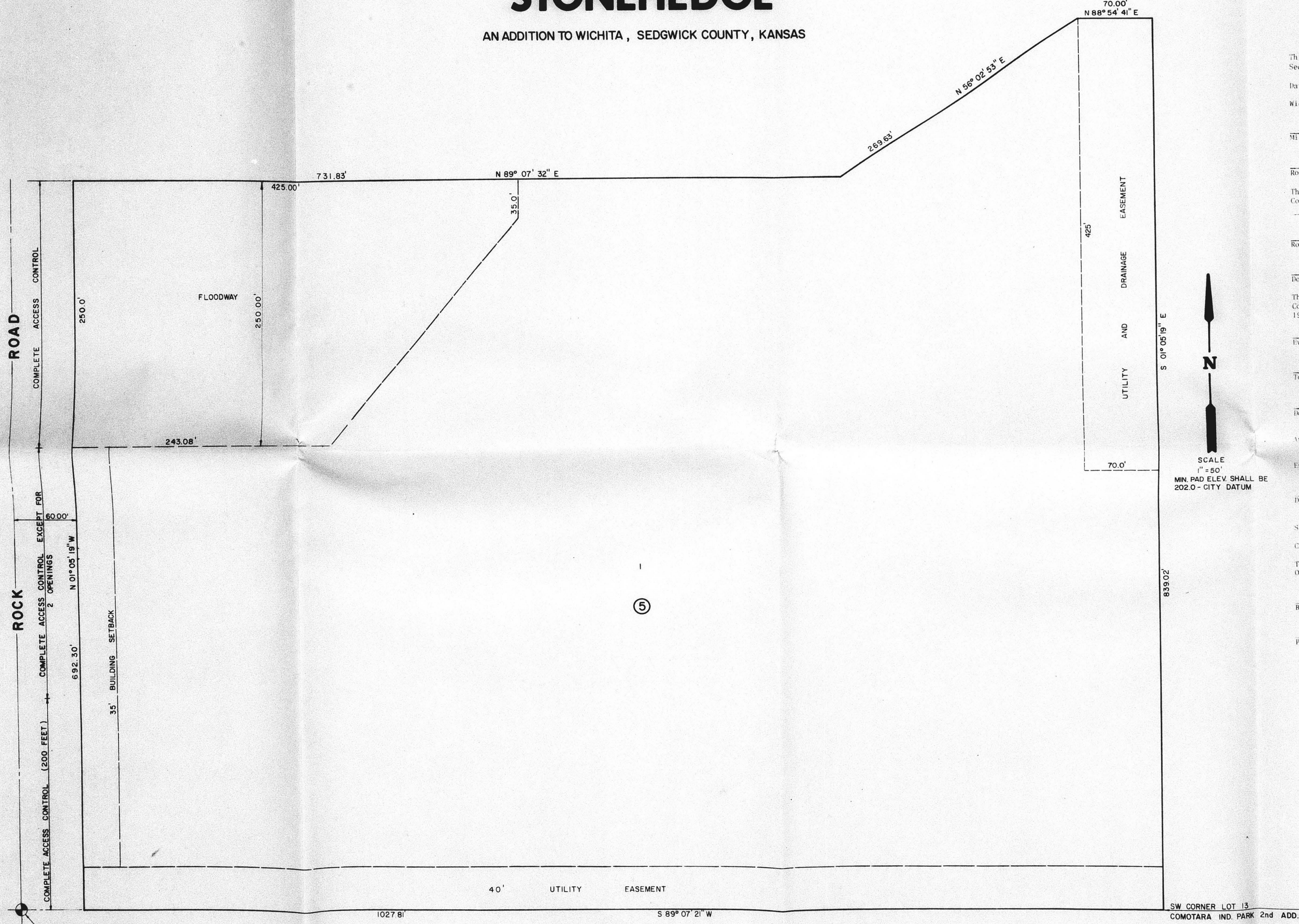
Be it remembered that on this \_\_\_\_\_ day of \_\_\_\_\_, 1980, before me, a Notary Public in and for said State and County, came the Citibank, N.A., New York City, New York, by Robert K. Fox, Attorney in fact for Citibank, N.A., to be personally known to be the same person who executed the foregoing instrument of writing and duly acknowledged the execution of the same. In testimony whereof, I have hereunto set my hand and affixed my notarial seal the day and year above written.

Carolyn E. Owen  
Notary Public

My Appointment Expires: \_\_\_\_\_

# PRELIMINARY PLAT FINAL PLAT OF STONEHEDGE

AN ADDITION TO WICHITA, SEDGWICK COUNTY, KANSAS



This plat of "Stonehedge" has been submitted to and approved by the Wichita-Sedgwick County Metropolitan Area Planning Commission, Wichita, Kansas.

Dated this \_\_\_\_\_ day of \_\_\_\_\_, 1980,  
Wichita-Sedgwick County Metropolitan Area Planning Commission

Michael J. Savina  
Chairman  
Robert A. Lakin  
Secretary

This plat approved and all dedications shown hereon, if any, accepted by the City Commission of the City of Wichita, Kansas this \_\_\_\_\_ day of \_\_\_\_\_, 1980.

Robert G. Knight  
Mayor  
Donald C. Gitsch  
City Clerk

This plat approved and all dedications shown hereon, if any, accepted by the Board of County Commissioners of Sedgwick County, Kansas this \_\_\_\_\_ day of \_\_\_\_\_, 1980.

Everett Patrick  
Chairman  
Tom Scott  
Commissioner  
Donald E. Gragg  
Commissioner

Arnot  
Dorothy K. White  
County Clerk

Entered on Transfer Record this \_\_\_\_\_ day of \_\_\_\_\_, 1980  
Dorothy K. White  
County Clerk

State of Kansas  
County of Sedgwick

This is to certify that this instrument was filed for record in the Register of Deeds Office at \_\_\_\_\_ o'clock on the \_\_\_\_\_ day of \_\_\_\_\_, 1980.

Rette F. Metzer  
Register of Deeds  
Pat Kettler  
Deputy

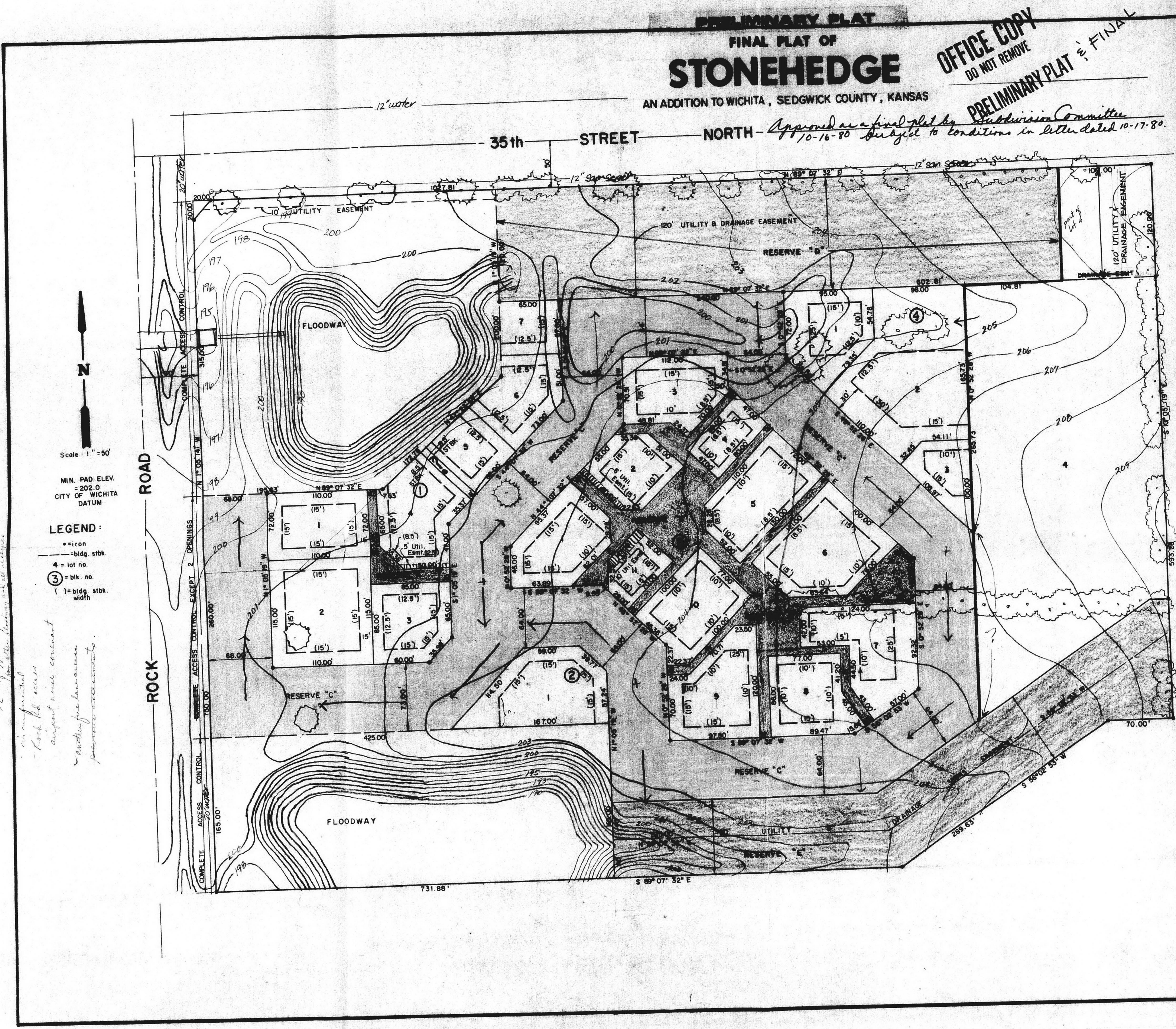


**PRELIMINARY PLAT**  
**FINAL PLAT OF**  
**STONEHEDGE**  
 AN ADDITION TO WICHITA, SEDGWICK COUNTY, KANSAS

**OFFICE COPY**  
 DO NOT REMOVE  
**PRELIMINARY PLAT** & **FINAL**

**SID 80-84**

*Approved as final plat by Subdivision Committee 4/10-16-80 subject to conditions in letter dated 10-17-80.*



Scale 1" = 50'  
 MIN. PAD ELEV. = 202.0  
 CITY OF WICHITA DATUM

**LEGEND:**  
 - iron  
 - 1/2" dia. stak  
 - 1/4" dia. stak  
 - 1" dia. stak  
 - 1 1/2" dia. stak  
 - width

*Handwritten notes:*  
 - 12" water  
 - 12" sewer  
 - 12" storm  
 - 12" gas  
 - 12" electric  
 - 12" water  
 - 12" sewer  
 - 12" storm  
 - 12" gas  
 - 12" electric

I, Kenneth H. Bengtson, a Civil Engineer in Kansas, do hereby certify that I have been in responsible charge of surveying and platting of "Stonehedge", an addition to Wichita, Sedgewick County, Kansas into lots, blocks, floodways and reserves, the same being accurately set forth on the accompanying plat and described as follows:

A replat of Lot 1, Block 1, Comtara Business Park, an addition to Wichita, Sedgewick County, Kansas.

Previous access rights granted in the plat of "Comtara Business Park" are hereby vacated by virtue of K.S.A. 12-512b. I hereby certify that the details of this plat are correct to the best of my knowledge and belief this \_\_\_\_\_ day of \_\_\_\_\_ 1980.

Kenneth H. Bengtson  
 VAN BORN-HAZARD-STALLINGS  
 Architects-Engineers  
 260 N. Rock Road Suite 250  
 Wichita, Kansas 67206

Know all men by these presents that we the undersigned property owners of the land as above set forth in the Civil Engineer's Certificate have caused the same to be surveyed and platted into lots, blocks, floodways, and reserves, the same to be known as "Stonehedge", an addition to Wichita, Sedgewick County, Kansas, easements for the construction and maintenance of public utilities and drainage, as indicated on the accompanying plat are hereby granted. Reserves "A" and "B" are planned for construction and maintenance of public utilities, sidewalks and open space. Reserve "C" is planned for the use of floodways, fire lanes, easements and maintenance of public utilities, parking, open space and private drives. Reserves "D" and "E" are planned for drainage and construction and maintenance of public UTILITY. Floodway shall be the responsibility of the owners of the property in the subdivision until such time as the governing body exercising jurisdiction elects to assume the responsibility for maintenance and improvement of the drainage, provided further, that no structure shall be constructed on or within said floodway, nor shall any fill, change of grade, creation of a channel or other work be carried on without the permission of the Wichita-Sedgewick County Flood Control Office or their successors of office. All abutters' rights of access to or from Rock Road over and across the east line of Rock Road are hereby granted to the City of Wichita, Kansas, provided, however, that Reserve "C" shall have access to Rock Road at two locations and lot 1, Block 5, shall have access to Rock Road at two locations, said locations to be determined by the Engineer of the City of Wichita. Minimum building pad elevation shall be 202.0 City of Wichita Datum.

*Handwritten notes:*  
 - 12" water  
 - 12" sewer  
 - 12" storm  
 - 12" gas  
 - 12" electric

By: Robert R. Fox  
 Attorney in fact for Wichita Development Company  
 STATE OF KANSAS  
 COUNTY OF SEDGWICK

Be it remembered that on this \_\_\_\_\_ day of \_\_\_\_\_ 1980 before me, a Notary Public in and for said State and County, came the Wichita Development Company, by Robert R. Fox, Attorney in fact for Wichita Development Company, to be personally known to be the same person who executed the foregoing instrument of writing and duly acknowledged the execution of the same. In testimony whereof, I have hereunto set my hand and affixed my notarial seal the day and year above written.

Carolyn R. Owen  
 Notary Public  
 My Appointment Expires: \_\_\_\_\_

Be the Citibank, N.A., New York City, New York mortgages on the above described property do hereby consent to the plat of "Stonehedge".  
 The Citibank, N.A., New York City, New York

By: Robert R. Fox  
 Attorney in fact for Citibank, N.A.  
 STATE OF KANSAS  
 COUNTY OF SEDGWICK

Be it remembered that on this \_\_\_\_\_ day of \_\_\_\_\_ 1980 before me, a Notary Public in and for said State and County, came the Citibank, N.A., New York City, New York, by Robert R. Fox, attorney in fact for Citibank, N.A., to be personally known to be the same person who executed the foregoing instrument of writing and duly acknowledged the execution of the same. In testimony whereof, I have hereunto set my hand and affixed my notarial seal the day and year above written.

Carolyn R. Owen  
 Notary Public  
 My Appointment Expires: \_\_\_\_\_

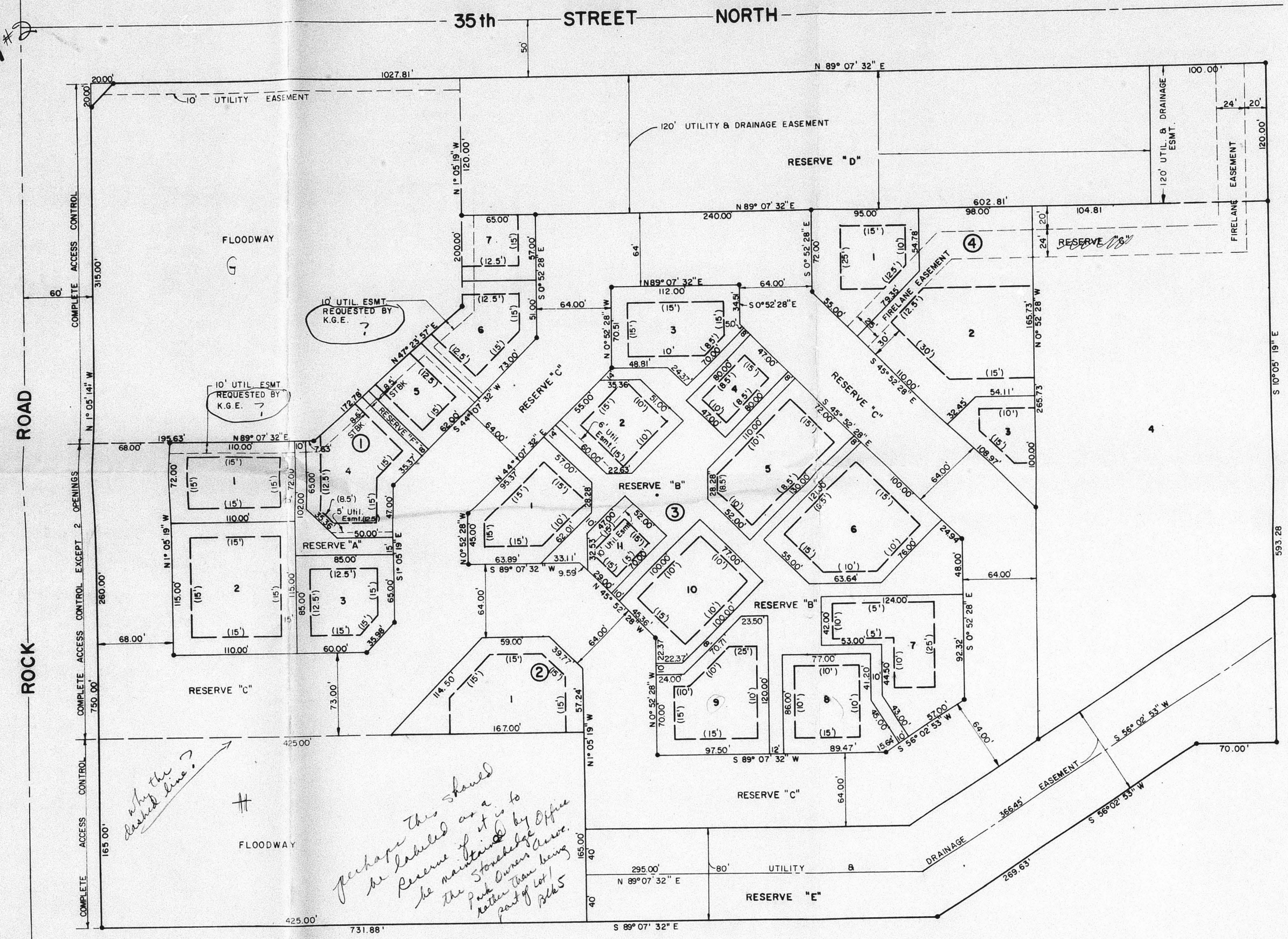


S/D 80-84

REVISED COPY  
OFFICE COPY  
DO NOT REMOVE

# FINAL PLAT OF STONEHEDGE

AN ADDITION TO WICHITA, SEDGWICK COUNTY, KANSAS



Scale 1" = 50'  
MIN. PAD ELEV  
= 202.0  
CITY OF WICHITA  
DATUM

LEGEND:  
- iron  
- bldg. stba  
- lot no.  
- blk. no.  
- bldg. stba. width

I, Kenneth H. Bengtson, a Civil Engineer in Kansas, do hereby certify that I have been in responsible charge of surveying and platting of "Stonehedge", an addition to Wichita, Sedgwick County, Kansas into lots, blocks, floodways and reserves, the same being accurately set forth in the accompanying plat and described as follows:

A replat of lot 1, Block 1, Comtara Business Park, an addition to Wichita, Sedgwick County, Kansas.

Previous access rights granted in the plat of "Comtara Business Park" are hereby vacated by virtue of K.S.A. 17-212b. I hereby certify that the details of this plat are correct to the best of my knowledge and belief this \_\_\_\_\_ day of \_\_\_\_\_, 1980.

Kenneth H. Bengtson  
1548 NORTH HICKORY STALLINGS  
Architects-Engineers  
260 N. Rock Road Suite 250  
Wichita, Kansas 67206

Know all men by these presents that we the undersigned property owners of the land as above set forth in the Civil Engineer's certificate have caused the same to be surveyed and platted into lots, blocks, floodways, and reserves, the same to be known as "Stonehedge", an addition to Wichita, Sedgwick County, Kansas, easements for the construction and maintenance of public utilities and drainage, as indicated on the accompanying plat are hereby granted. Reserves "A", "B", "C", and "D" are platted for construction and maintenance of public utilities, sidewalks, streets and maintenance of public utilities, parking, open space and private drives. Reserves "E" and "F" are platted for drainage and construction and maintenance of public utilities. Reserve "G" is platted for fire lanes purposes. All reserves shall be owned and maintained by the owners of the lots within the subdivision (except lot 4, Block 1, Floodways shall be the responsibility of the owners of the property in the subdivision until such time as the governing body exercising jurisdiction elects to assume the responsibility for maintenance and improvement of the drainage, provided further, that no structure shall be constructed on or within said floodway, nor shall any fill, change of grade, creation of channel or other work be carried on without the permission of the Wichita-Sedgwick County Flood Control Office or their successors in office. All abutters' rights of access to or from Rock Road over and across the east line of Rock Road are hereby granted to the City of Wichita, Kansas, provided, however, that Reserve "C" shall have access to Rock Road at two locations and lot 1, Block 5, shall have access to Rock Road at two locations except over the south 200 feet of said lot 1, said locations to be determined by the Engineer of the City of Wichita. Minimum building pad elevation shall be 202.0, City of Wichita datum.

Wichita Development Company

By: Robert R. Fox  
Attorney in fact for Wichita Development Company

STATE OF KANSAS  
COUNTY OF SEDGWICK

Be it remembered that on this \_\_\_\_\_ day of \_\_\_\_\_, 1980 before me, a Notary Public in and for said State and County, came the Wichita Development Company, by Robert R. Fox, Attorney in fact for Wichita Development Company, to be personally known to be the same person who executed the foregoing instrument of writing and duly acknowledged the execution of the same. In testimony whereof I have hereunto set my hand and affixed my notarial seal the day and year above written.

Carolyn R. Oden, Notary Public

No Appointment Expires: \_\_\_\_\_

Be the Citibank, S.A., New York City, New York mortgagees on the above described property do hereby consent to the plat of "Stonehedge"

The Citibank, S.A., New York City, New York

By: Robert R. Fox  
Attorney in fact for Citibank, S.A.

STATE OF KANSAS  
COUNTY OF SEDGWICK

Be it remembered that on this \_\_\_\_\_ day of \_\_\_\_\_, 1980 before me, a Notary Public in and for said State and County, came the Citibank, S.A., New York City, New York, by Robert R. Fox, attorney in fact for Citibank, S.A., to be personally known to be the same person who executed the foregoing instrument of writing and duly acknowledged the execution of the same. In testimony whereof, I have hereunto set my hand and affixed my notarial seal the day and year above written.

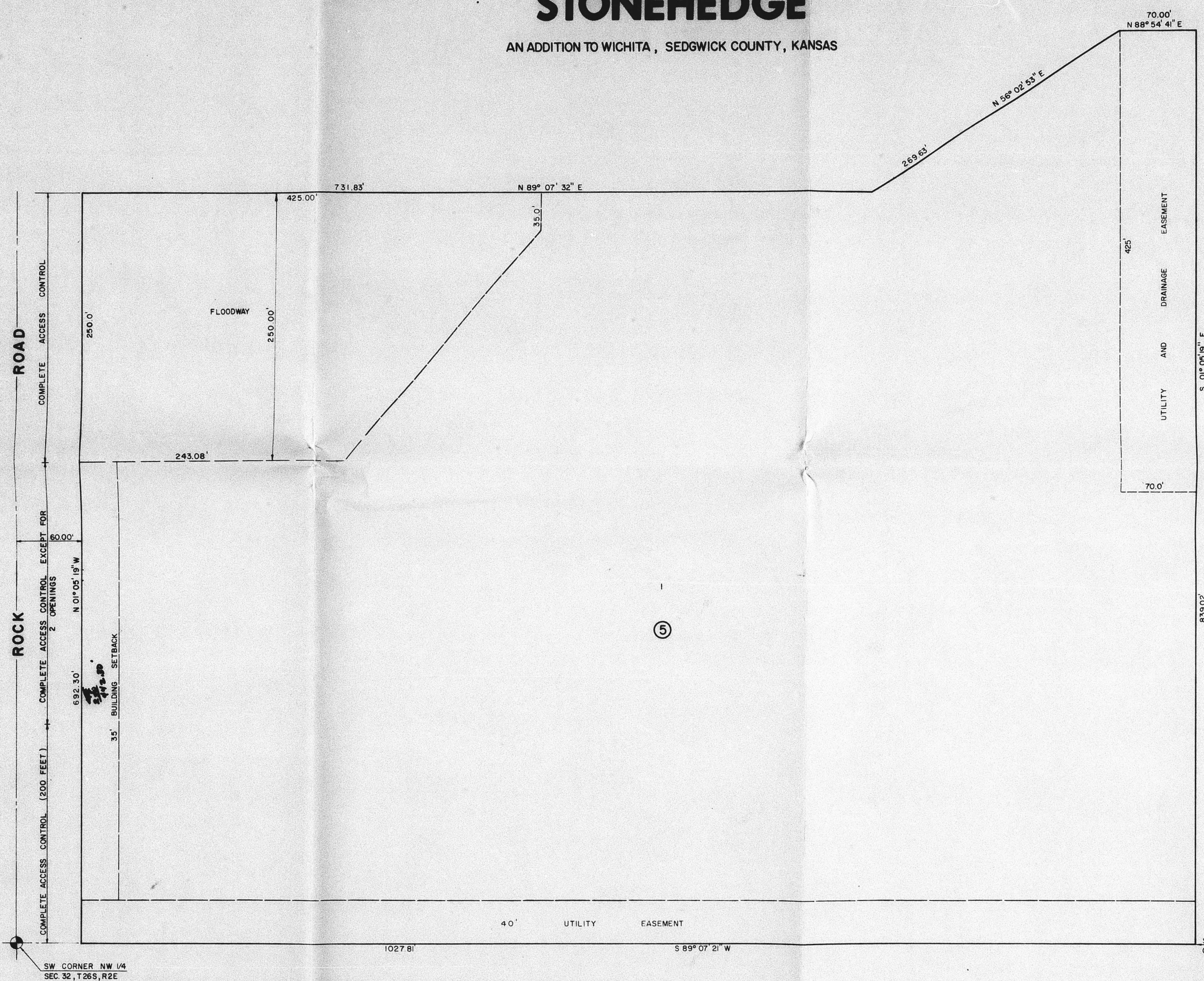
Carolyn R. Oden, Notary Public

No Appointment Expires: \_\_\_\_\_

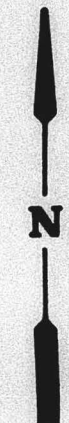
*Handwritten note:*  
When final plat is filed  
as to Reserve  
as to Reserve  
(10)

PRELIMINARY PLAT  
FINAL PLAT OF  
**STONEHEDGE**

AN ADDITION TO WICHITA, SEDGWICK COUNTY, KANSAS



SCALE  
1" = 50'  
MIN PAD ELEV SHALL BE  
202.0 - CITY DATUM



This plat of "Stonehedge" has been submitted to and approved by the Wichita-Sedgewick County Metropolitan Area Planning Commission, Wichita, Kansas, dated this \_\_\_\_\_ day of \_\_\_\_\_, 1980.  
Wichita-Sedgewick County Metropolitan Area Planning Commission

\_\_\_\_\_, Chairman  
\_\_\_\_\_, Secretary  
\_\_\_\_\_, Mayor  
\_\_\_\_\_, City Clerk

This plat approved and all dedications shown hereon, if any, accepted by the Board of County Commissioners of Sedgewick County, Kansas this \_\_\_\_\_ day of \_\_\_\_\_, 1980.

\_\_\_\_\_, Chairman  
\_\_\_\_\_, Commissioner  
\_\_\_\_\_, Commissioner  
\_\_\_\_\_, County Clerk

Attest: \_\_\_\_\_, County Clerk  
Entered on Transfer Record this \_\_\_\_\_ day of \_\_\_\_\_, 1980.

\_\_\_\_\_, County Clerk

State of Kansas  
County of Sedgewick

This is to certify that this instrument was filed for record in the Register of Deeds Office at \_\_\_\_\_ o'clock on the \_\_\_\_\_ day of \_\_\_\_\_, 1980.

\_\_\_\_\_, Register of Deeds  
\_\_\_\_\_, Deputy

SW CORNER LOT 13  
COMOTARA IND. PARK 2nd ADD.