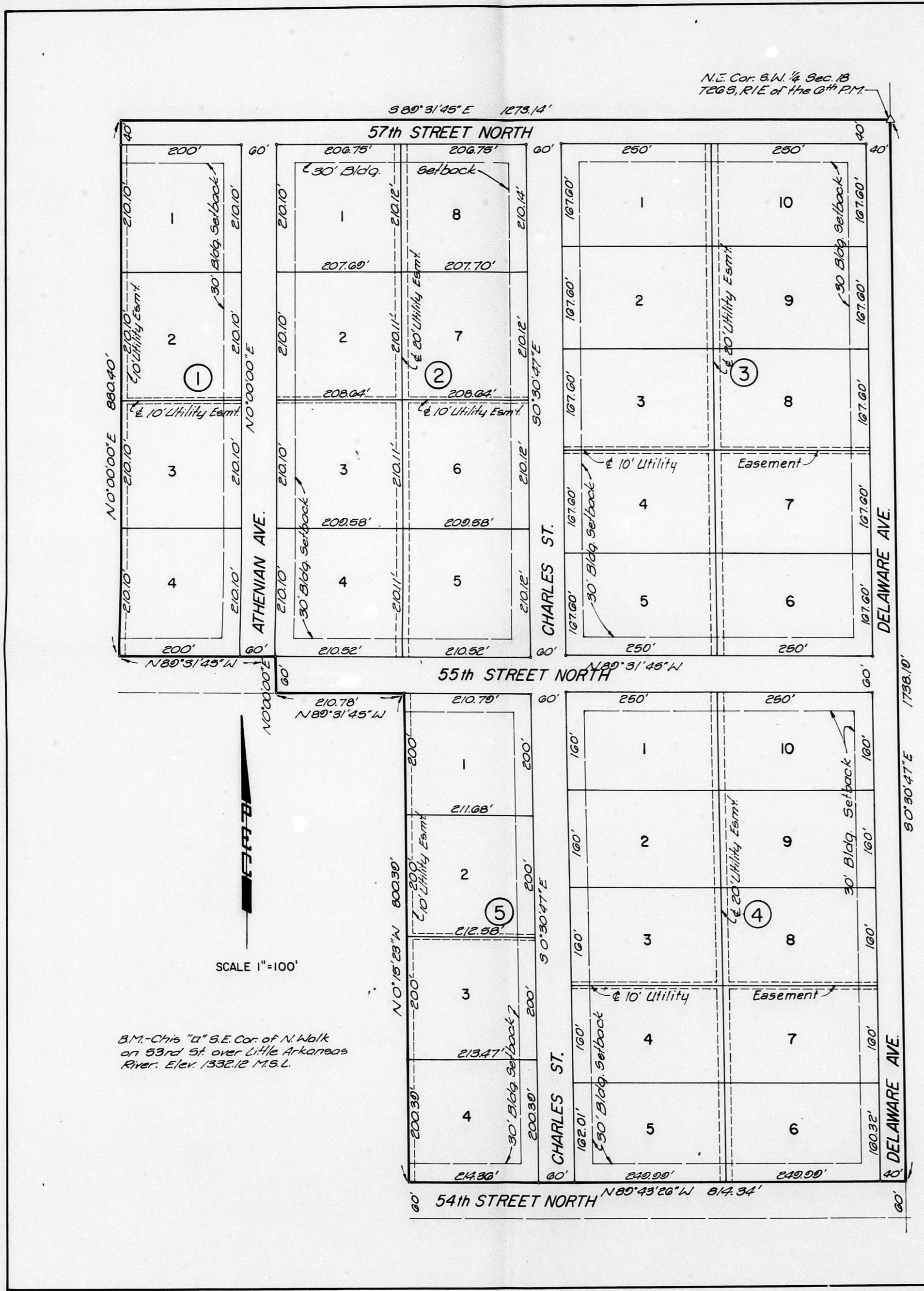


L



OFFICE COPY
DO NOT REMOVE
FINAL PLAT

Approved by Subdivision
Committee 1-9-81
SD 80-105 subject to conditions
in letter dated 1-12-81.

LEEWOOD HEIGHTS
4th ADDITION
SEDGWICK COUNTY, KANSAS

State of Kansas
County of Sedgwick

I, Richard W. Linn, a Professional Engineer in aforesaid State and County, do hereby certify that on this day of 1980, I have caused to be surveyed and platted Leewood Heights 4th Addition, Sedgwick County, Kansas, into lots, blocks, and streets, the same being described as:

Beginning at the N.E. Corner of the S.W. 1/4 of Section 18, Township 28 South, Range 1 East of the 6th P.M.; thence bearing S 0° 30' 47" E along the east line of said S.W. 1/4 a distance of 173.17 feet to the north right-of-way line of 54th Street North; thence bearing N 89° 43' 26" W along said line a distance of 814.34 feet to a point on the east line of Block 4, Leewood Heights 2nd Addition, Sedgwick County, Kansas; thence bearing N 0° 19' 23" W along said east line a distance of 800.39 feet to a point on the north line of said Block 4, said point also being on the south right-of-way line of 55th Street North; thence bearing N 89° 31' 45" W along said line a distance of 250 feet to a point on the east line of Block 2, said Leewood Heights 2nd Addition; thence bearing N 0° 00' E along said line a distance of 880.40 feet to a point on the north line of said S.W. 1/4; thence bearing S 89° 31' 45" E along said line a distance of 1273.17 feet to the point of Beginning.

Richard W. Linn, P.E.
No. 3684

Know all men by these presents that we, the undersigned owners of the land as above set forth in the Engineer's Certificate, have caused the land to be surveyed and platted into lots, blocks, and streets, the same to be known as Leewood Heights 4th Addition, Sedgwick County, Kansas. Easements, as indicated, for the construction and maintenance of public utilities and for drainage purposes, are hereby granted. The streets are hereby dedicated to and for the use of the public.

Leewood Homes, Inc.
Joe H. Lee President
Rodney J. Lee Secretary

State of Kansas
County of Sedgwick

Be it remembered that on this day of 1980, before me, a Notary Public in and for said State and County, came Leewood Homes, Inc. by Joe H. Lee, President, and Rodney J. Lee, Secretary, to me personally known to be the same persons who executed the foregoing instrument of writing and duly acknowledged the execution of same. In testimony whereof I have hereunto set my hand and affixed my notarial seal the day and year above written.

Patricia A. Nelson Notary Public

My Commission Expires:

This plat submitted to and approved by the Wichita-Sedgwick County Metropolitan Area Planning Commission, Wichita, Kansas. Dated this day of 1980.

Michael J. Savino Chairman

Robert A. Lakin Secretary

This plat approved and all dedications shown hereon are accepted by the City Commission of the City of Wichita, Kansas. Dated this day of 1980.

Robert G. Knight Mayor

Donald C. Gisick City Clerk

This is to certify that this instrument was filed for record in the Register of Deeds Office at M. Dated this day of 1980.

Bette F. McCart Register of Deeds

Pat Kettler Deputy

This plat approved and all dedications shown hereon are accepted by the Board of County Commissioners of Sedgwick County, Kansas. Dated this day of 1980.

Everett Patrick Chairman

Tom Scott Commissioner

Donald E. Gragg Commissioner

Attest:
Dorothy K. White County Clerk

Entered on Transfer Record this day of 1980.

Dorothy K. White County Clerk