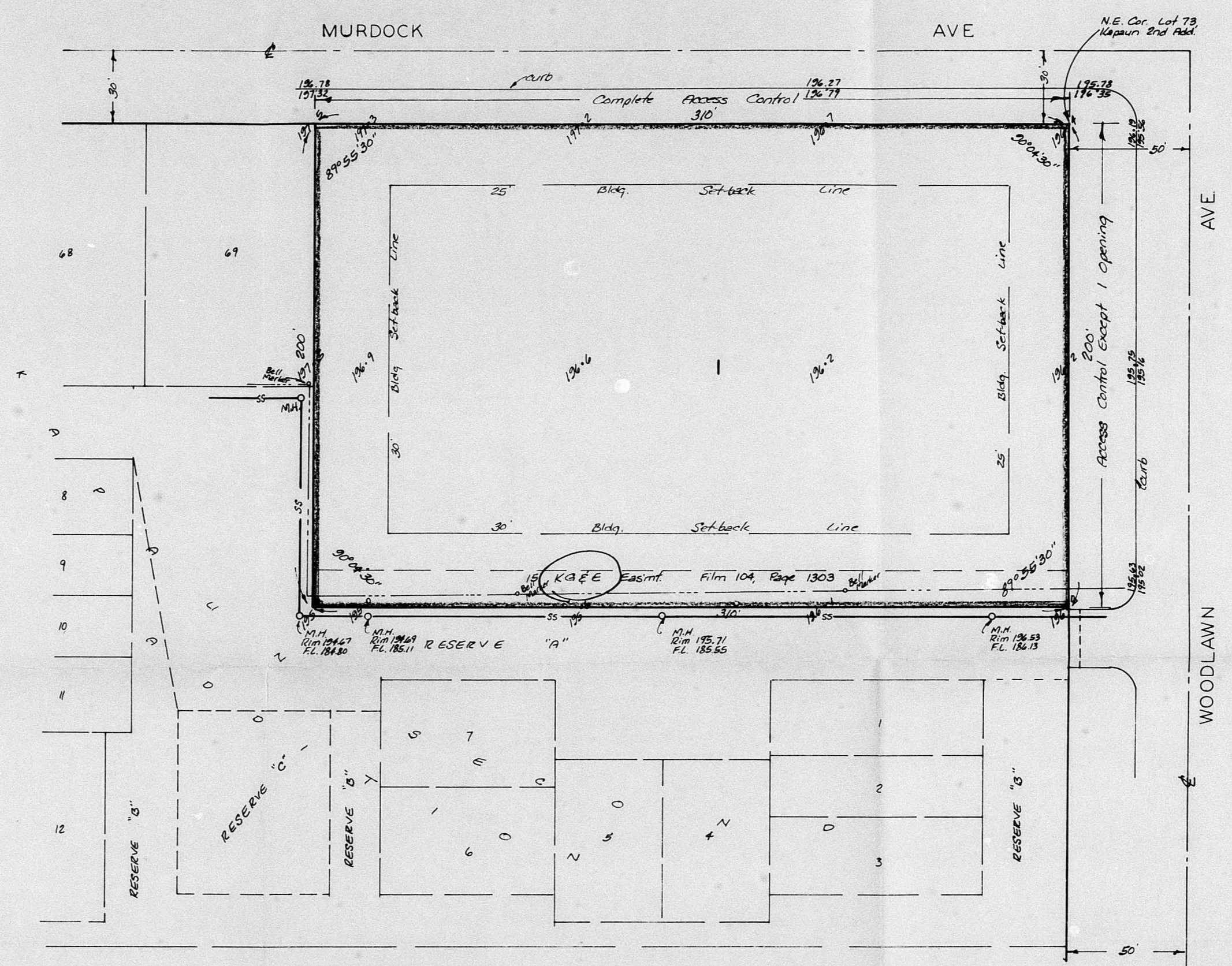


K

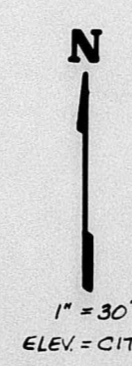


OFFICE COPY
DO NOT REMOVE
SD81-16

SKETCH PLAT
KAPAUN THIRD ADDITION

LOTS 70, 71, 72, 73, 74, 75, 76, 77, 78, 79, 80, 81, 82 AND RESERVES O, E, F,
KAPAUN SECOND ADDITION TO WICHITA, KANSAS.

CARL CHUZY ; TOLA CHUZY



1" = 30'
ELEV = CITY DATUM

BENCH MARK:
City of Wichita Standard Dms. 44" W & 36" N of
E of Woodlawn and Central
Elevation = 192.267 City Datum

BAUGHMAN COMPANY, P.A.
SURVEYORS
316/262-7271 • 330 LAURA • WICHITA, KANSAS 67211

13 FEB 81

KAPAUN THIRD ADDITION

TO WICHITA KANSAS

Approved by 5/0 Committee 3-5-81
 subject to conditions
 in associated letter.
FINAL PLAT
SD 81-16
OFFICE COPY
 DO NOT REMOVE

State of Kansas, SS. We, Baughman Company, P.A., Surveyors in Sedgewick County and State do hereby certify that we have surveyed and platted "KAPAUN THIRD ADDITION" to Wichita, Kansas and that the accompanying plat is a true and correct exhibit of the property surveyed, described as and being a replat of Lots 19, 21, 22, 23, 24, 25, 26, 27, 28, 29, 30, 31, 32 and 33 and 34 of the "Kapaun Second Addition to Wichita, Kansas," all being situated in the SE 1/4 of Sec. 13, Twp. 27S, R.1E.

Baughman Company, P.A.

Date _____ Surveyor
 William L. Korker

Know all men by these presents that we, the undersigned, have caused the land described in the surveyors certificate to be platted into a lot to be known as "KAPAUN THIRD ADDITION" to Wichita, Kansas. The easement is hereby granted as indicated for the construction and maintenance of all public utilities. All abutters rights of access to or from Woodlawn Ave. over and across the east line of Lot 1 and to or from Murdock Ave. over and across the north line of Lot 1 are hereby granted to the City of Wichita, Kansas provided however that Lot 1 shall have access to Woodlawn Ave. at a point as shall be determined by the City Engineer of the City of Wichita, Kansas.

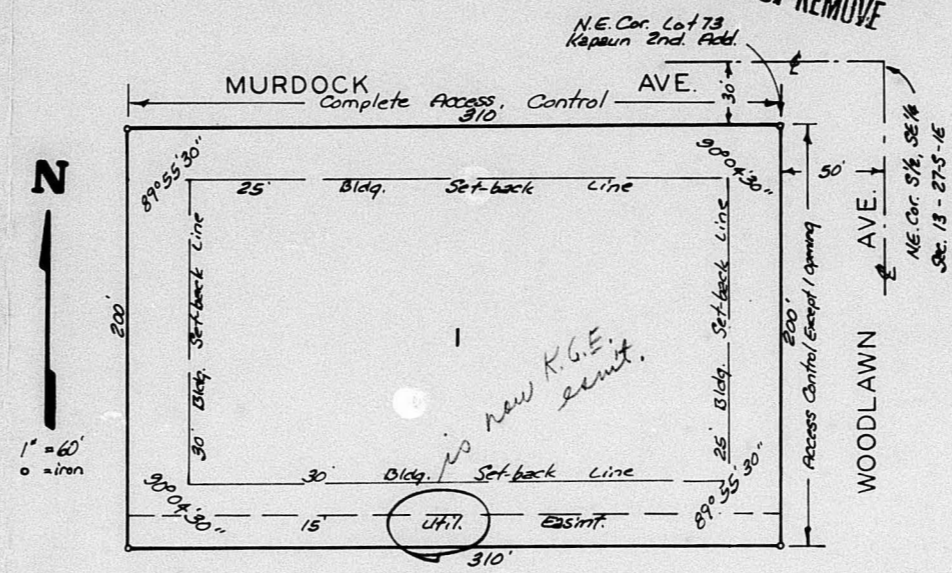
Carl Chugy _____ Tole Chugy _____
 Notary Public

State of Kansas, SS. The foregoing instrument acknowledged before me this _____ day of _____, 1981 by Carl Chugy and Tole Chugy, his wife.

My Comm. Exp. _____ Notary Public

State of Kansas, SS. This is to certify that this plat has been filed for record in the office of the Register of Deeds this _____ day of _____, 1981, at _____ o'clock _____ M; and is duly recorded.

_____ Register of Deeds
 _____ Deputy



This plat of "KAPAUN THIRD ADDITION" to Wichita, Kansas has been submitted to and approved by the Wichita-Sedgewick County Metropolitan Area Planning Commission, Wichita, Kansas. Dated this _____ day of _____, 1981.

Wichita-Sedgewick County Metropolitan Area Planning Commission.
 _____ Chairman
 John Hennessy
 _____ Secretary

This plat approved and all dedications shown herein accepted by the Board of Commissioners of the City of Wichita, Kansas, this _____ day of _____, 1981.

_____ Mayor
 _____ City Clerk

This plat approved and all dedications shown herein accepted by the Board of Commissioners, Sedgewick County, Kansas, this _____ day of _____, 1981.

_____ Chairman
 _____ Commissioner
 _____ Commissioner
 _____ County Clerk

Entered on transfer record this _____ day of _____, 1981.

_____ County Clerk

Approved by S/B Comm 10-2-80 subject to conditions in letter dated 10-3-80.

KINKAID PARK FIFTH ADDITION

TO WICHITA, SEDGWICK COUNTY, KANSAS

FINAL PLAT
OFFICE COPY
DO NOT REMOVE
SD 80-78

STATE OF KANSAS, COUNTY OF SEDGWICK, SS:

I, Don C. Moehring II, a Civil Engineer in said State and County, do hereby certify that I have surveyed and platted "KINKAID PARK FIFTH ADDITION" to Wichita, Sedgewick County, Kansas, into Lots and a Block, the same being accurately set forth on the accompanying plat and described as being a part of part of Lots 18, 19, and 18, KINKAID PARK THIRD ADDITION to Wichita, Kansas, described as beginning at a point in the North line and 120.0' East of the NW Corner of said Lot 18; thence N. 89°16'00" E., along the North line of said Lot 18, a distance of 128.72'; thence S. 30°01'12" W., a distance of 247.61'; thence N. 00°12'25" W., a distance of 212.80' to the point of beginning; together with all of KINKAID PARK FOURTH ADDITION, and also that part of Lot 18, Block A, KINKAID PARK SECOND ADDITION, lying East of KINKAID PARK FOURTH ADDITION, Wichita, Sedgewick County, Kansas, *State letter building setbacks and easements being varied by virtue of K.S.A. 12-522(c)*
Don C. Moehring II
Consulting Engineer
September 10, 1980

Know all men by these presents that we the undersigned, property owners of the land as above set forth in the Civil Engineer's certificate, have caused the same to be surveyed and platted into Lots and a Block, the same to be known as "KINKAID PARK FIFTH ADDITION" to Wichita, Sedgewick County, Kansas. Easements for the construction and maintenance of public utilities, as indicated on the accompanying plat, are hereby granted.

BUILDERS, INC., A CORPORATION

William E. Morin, Exec. Vice President
Warren Tanner, Secretary-Treasurer

STATE OF KANSAS, COUNTY OF SEDGWICK SS:

Be it remembered that on this _____ day of _____, 1980, before me, a Notary Public in and for said State and County, came Builders, Inc., a Corporation, by William E. Morin, Executive Vice President and Warren Tanner, Secretary-Treasurer, to me personally known to be the same persons who executed the foregoing instrument of writing and duly acknowledged the execution of the same. In testimony whereof I have hereunto set my hand and affixed my notarial seal the day and year above written.

Julie McGehee, Notary Public
My Commission Expires _____

This plat of "KINKAID PARK FIFTH ADDITION" has been approved by the Wichita-Sedgewick County Metropolitan Area Planning Commission. Dated this _____ day of _____, 1980.

_____, Chairman
Robert A. Lakin, Secretary

This plat has been approved and all dedications shown hereon, if any, accepted by the City Commission of the City of Wichita, Kansas, this day of _____, 1980.

Robert G. Knight, Mayor
Donald C. Glusick, City Clerk

This plat has been approved and all dedications shown hereon, if any, accepted by the Board of County Commissioners of Sedgewick County, Kansas, this day of _____, 1980.

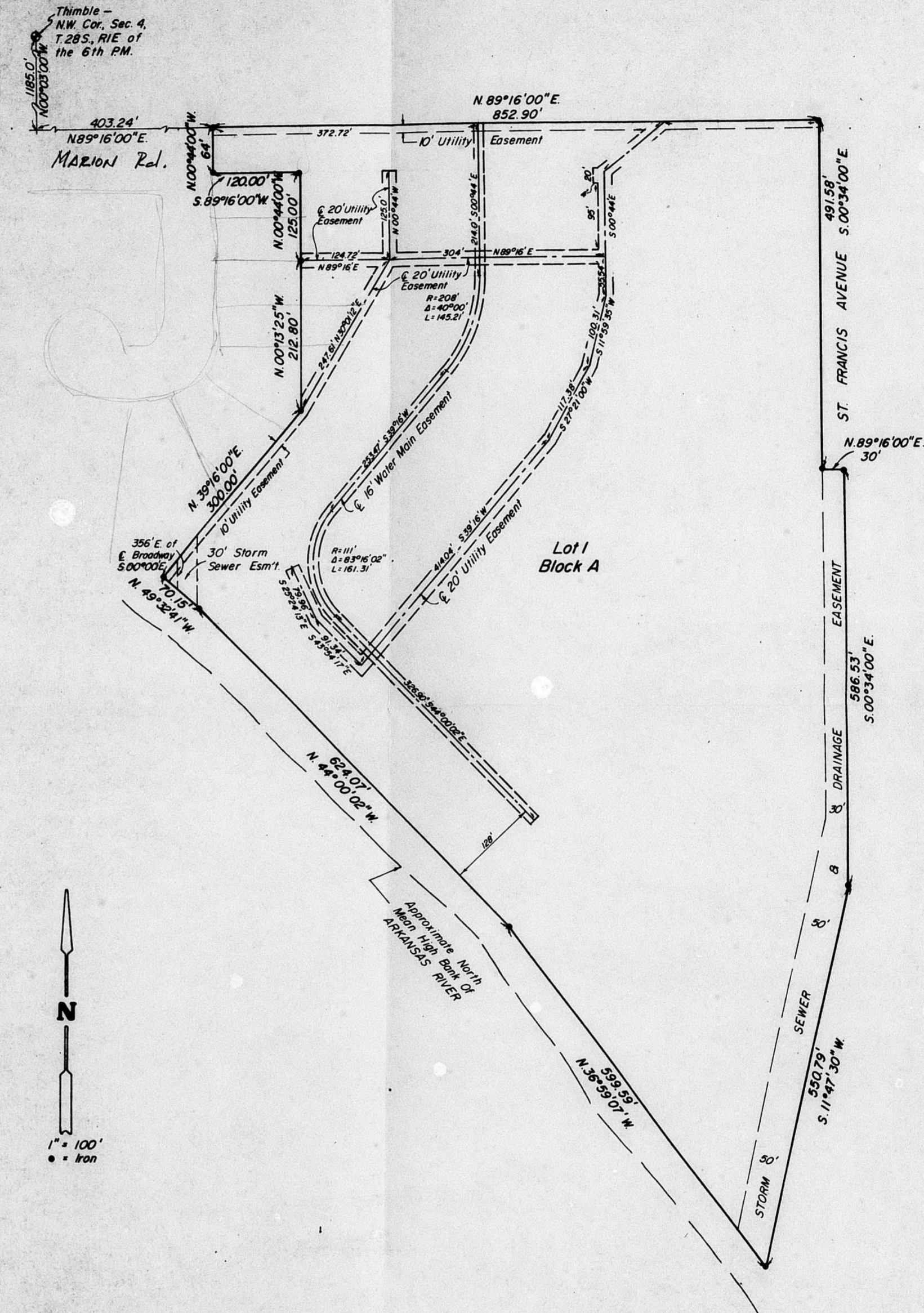
Everett Patrick, Chairman
Donald E. Gragg, Commissioner

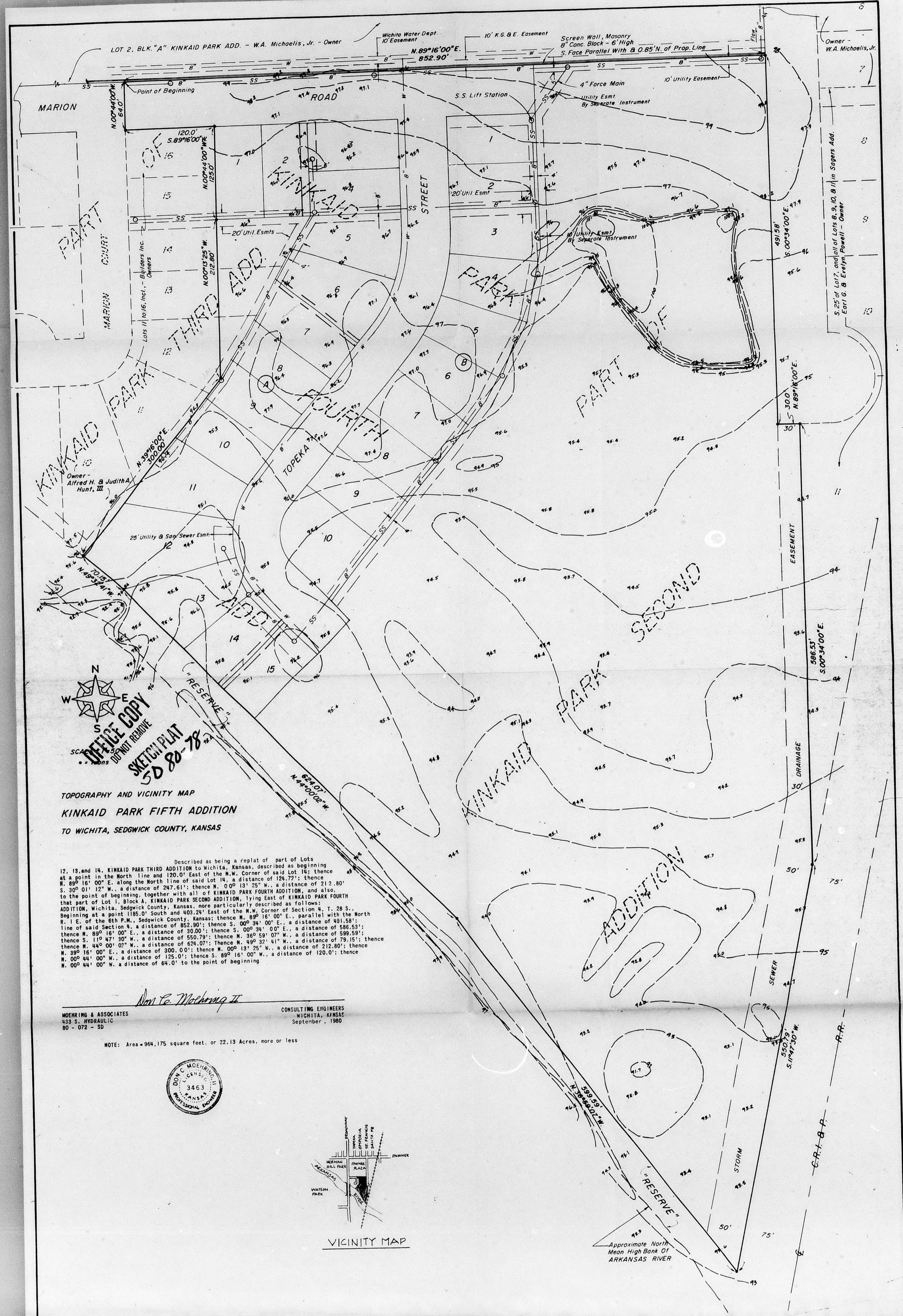
Tom Scott, Commissioner
Attest: Dorothy K. White, County Clerk

STATE OF KANSAS, COUNTY OF SEDGWICK SS:

This is to certify that this instrument was filed for record in the Register of Deeds Office at _____ on the _____ day of _____, 1980.

Bette F. McCart, Register of Deeds
Pat Kettler, Deputy
Entered on transfer record this _____ day of _____, 1980.
Dorothy K. White, County Clerk



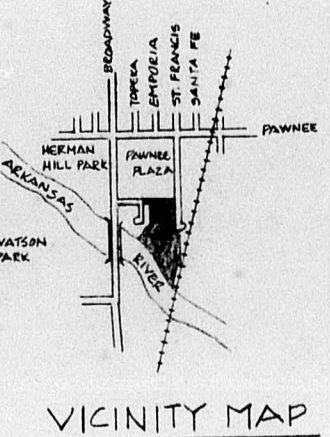


TOPOGRAPHY AND VICINITY MAP
KINKAID PARK FIFTH ADDITION
 TO WICHITA, SEDGWICK COUNTY, KANSAS

Described as being a replat of part of Lots 12, 13, and 14, KINKAID PARK THIRD ADDITION to Wichita, Kansas, described as beginning at a point in the North line and 120.0' East of the N.W. Corner of said Lot 12; thence N. 89° 16' 00" E. along the North line of said Lot 12, a distance of 124.77'; thence W. 30° 01' 12" W., a distance of 287.61'; thence N. 0° 00' 13" W., a distance of 212.80'; S. 30° 01' 12" W., a distance of 287.61'; thence N. 0° 00' 13" W., a distance of 212.80' to the point of beginning, together with all of KINKAID PARK FOURTH ADDITION, and also that part of Lot 1, Block A, KINKAID PARK SECOND ADDITION, lying East of KINKAID PARK FOURTH ADDITION, Wichita, Sedgwick County, Kansas, more particularly described as follows: Beginning at a point 1185.0' South and 403.25' East of the N.W. Corner of Section 4, T. 28 S., R. 1 E. of the 6th P.M., Sedgwick County, Kansas; thence N. 89° 16' 00" E., a distance of 491.58'; line of said Section 4, a distance of 30.00'; thence S. 0° 00' 34" 00" E., a distance of 586.53'; thence N. 89° 16' 00" E., a distance of 550.79'; thence S. 30° 01' 12" W., a distance of 586.53'; thence S. 11° 47' 30" W., a distance of 624.07'; thence N. 49° 32' 41" W., a distance of 79.15'; thence N. 49° 00' 00" W., a distance of 300.00'; thence N. 0° 00' 13" W., a distance of 212.80'; thence N. 0° 00' 13" W., a distance of 125.01'; thence S. 89° 16' 00" E., a distance of 120.0'; thence N. 0° 00' 13" W., a distance of 64.0' to the point of beginning.

Ann Le Mademp II
 MOERING & ASSOCIATES
 423 S. HYDRAULIC
 95 - 072 - 50
 CONSULTING ENGINEERS
 WICHITA, KANSAS
 September, 1980

NOTE: Area = 964,175 square feet, or 22.13 Acres, more or less



OFFICE COPY
 DO NOT REMOVE
 SKETCH PLAT
 50 80-78