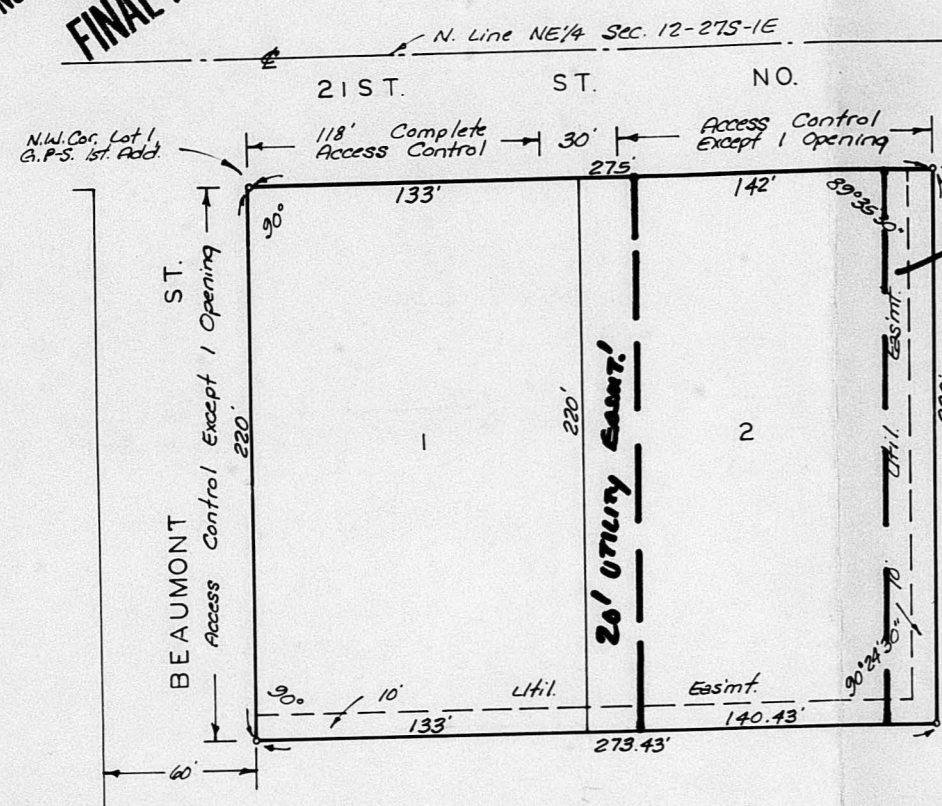


G

SD 81-24
OFFICE COPY
DO NOT REMOVE
FINAL PLAT

G. P. S. SECOND ADDITION
WICHITA, KANSAS.



G.P.S. 1st:
- quad. ss. to lots 1, 2, 3
- quad. 1/2 to lot 2
- quad. part of Beaumont
and 21st St.

This plat approved on 3/19/81 by
THE S/D COMMITTEE SUBJECT TO THE
CONDITIONS OUTLINED IN THE ASSOCIATED
LETTER DATED 3/20/81

State of Kansas, ss. We, Baughman Company, P.A., Surveyors in Sedwick County, and state do hereby certify that we have surveyed and platted "G. P. S. SECOND ADDITION" Wichita, Kansas and that the accompanying plat is a true and correct exhibit of the property surveyed described as and being a replat of Lots 1 and 2, G.P.S. First Addition, Wichita, Kansas, all being situated in the NE 1/4 of Sec. 13, Twp. 27S, R. 1E.

Baughman Company, P.A.
William L. Korber Surveyor

Know all men by these presents that we, the undersigned, have caused the land described in the surveyors certificate to be platted into lots to be known as "G. P. S. SECOND ADDITION" Wichita, Kansas. The easements are hereby granted for the construction and maintenance of all public utilities. All abutting rights of access to or from 21st St. No. over and across the west 1/2 of Lot 1 and the east 1/2 of Lot 2, to or from Beaumont St. over and across the west 1/2 of Lot 1, are hereby granted to the City of Wichita, Kansas, provided however, that Lot 1 shall have access to Beaumont St. at 1 point and the east 1/2 of Lot 2 shall have access to 21st St. No. at 1 point, all as shall be determined by the City engineer of the City of Wichita, Kansas.

Slawson Investments, Inc.
Larry C. Chambers Vice-President

State of Kansas, ss. The foregoing instrument was acknowledged before me, this day of 1981, by Larry C. Chambers, Vice-President of Slawson Investments, Inc.
My Comm. Exp. _____
Notary Public

This plat of "G. P. S. SECOND ADDITION" Wichita, Kansas, has been submitted to and approved by the Wichita-Sedwick County Metropolitan Area Planning Commission, Wichita, Kansas. Dated this day of 1981.
Wichita-Sedwick County Metropolitan Area Planning Commission

John Henneberry Chairman
Robert H. Lakin Secretary

This plat approved and all dedications shown hereon accepted by the Board of Commissioners of the City of Wichita, Kansas, this day of 1981.

Mayor
Robert B. Knight
City Clerk
Donald O. Black

This plat approved and all dedications shown hereon accepted by the Board of Commissioners, Sedwick County, Kansas, this day of 1981.

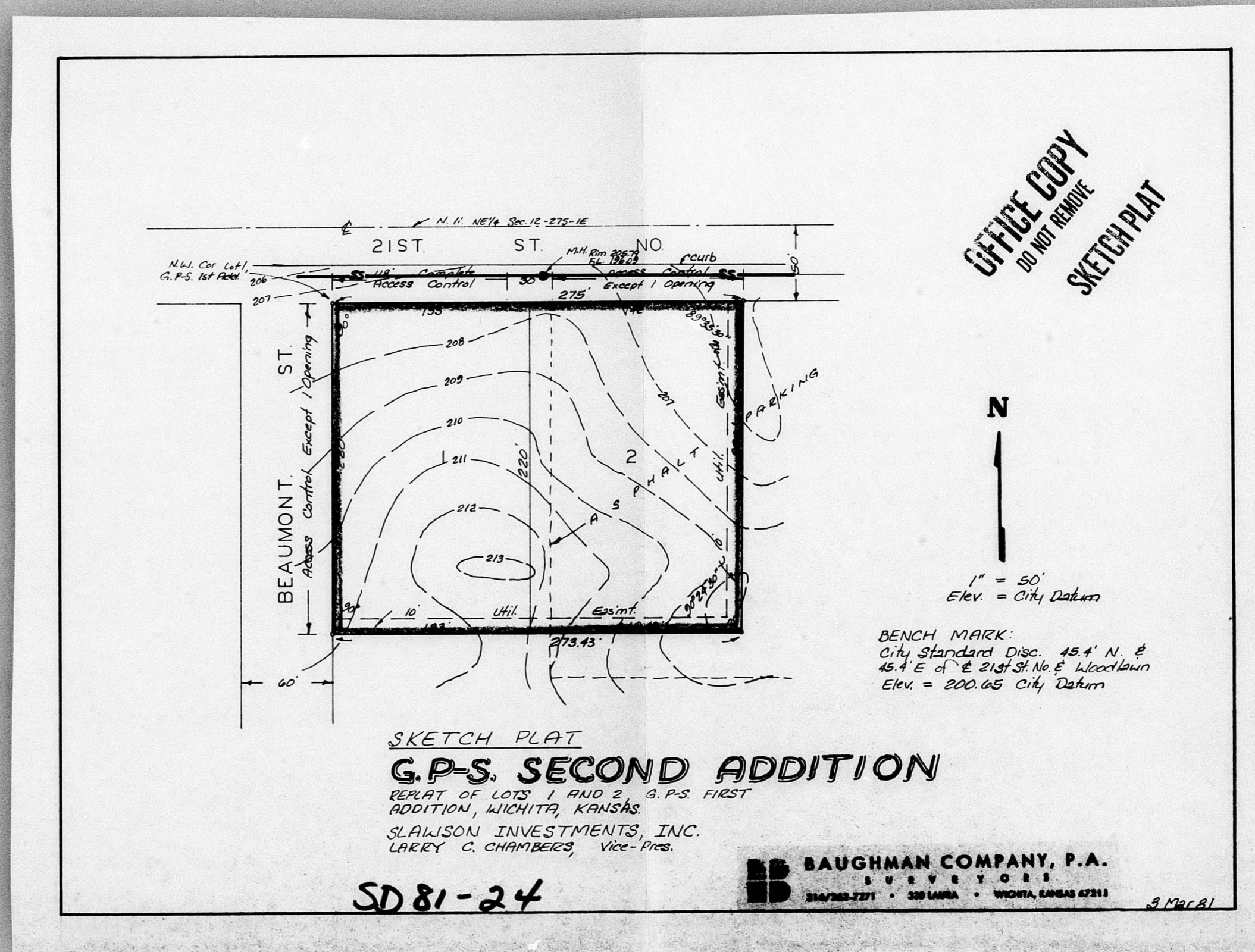
Chairman
Donald E. Grogg
Commissioner
Tom Scott
Commissioner
Jack Spratt
County Clerk
Dorothy K. White

Entered on transfer record this day of 1981.

Dorothy K. White County Clerk

State of Kansas, ss. This is to certify that this plat has been filed for record in the office of the Register of Deeds, this day of 1981, at o'clock M; and is duly recorded.

Deputy
Bill F. Knight
Deputy
Tom Kuttler



OFFICE COPY
DO NOT REMOVE
SKETCH PLAT

SKETCH PLAT
G. P. S. SECOND ADDITION

REPLAT OF LOTS 1 AND 2, G. P. S. FIRST ADDITION, WICHITA, KANSAS.
SLAWSON INVESTMENTS, INC.
LARRY C. CHAMBERS, Vice-Pres.

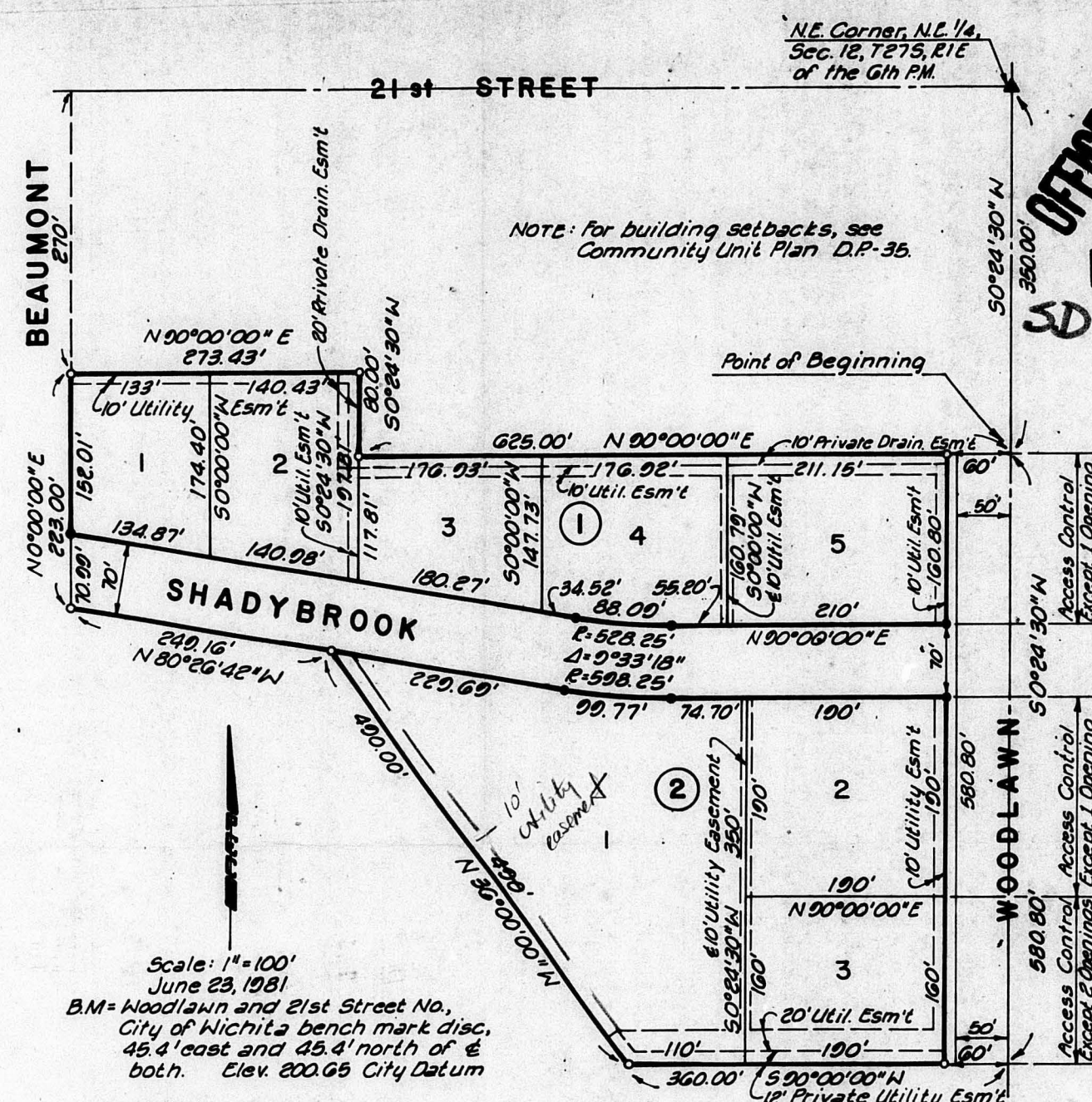
SD 81-24

BAUGHMAN COMPANY, P.A.
SURVEYORS
2147 22nd St. • 220 LARSA • WICHITA, KANSAS 67211

BENCH MARK:
City Standard Disc. 43.4' N. E.
45.4' E. of E. 21st St. No. E. Woodlawn
Elev. = 200.65 City Datum

G.P-S. 3RD ADDITION

WICHITA, SEDGWICK COUNTY, KANSAS



NOTE: For building setbacks, see Community Unit Plan D.P-35

OFFICE COPY
DO NOT REMOVE
FINAL PLAT
SD 81-56

This plat approved by the S.10
Comm on 7/1/81 sub. to the code
outlined in the assoc. letter
dated 7/1/81

State of Kansas ss
County of Sedgwick ss

Be it remembered that on this _____ day of _____, 1981, before me, a Notary Public in aforesaid State and County, came Slawson Investment Corporation by its President, John F. Essillion, to me personally known to be the same person who executed the foregoing instrument of writing and duly acknowledge the execution of same for and on behalf and as the voluntary act and deed of said corporation, in testimony whereof I have hereunto set my hand and affixed my notarial seal the day and year above written.

Notary Public
My Commission Expires: _____

Know all men by these presents that we, N.A.T. Integrity, Inc., mortgagee on the land as above described in the Engineer's Certificate, do hereby consent to the platting of "G.P-S. 3rd ADDITION," Wichita, Sedgwick County, Kansas.

N.A.T. Integrity, Inc.

State of Kansas ss
County of Sedgwick ss

Be it remembered that on this _____ day of _____, 1981, before me, a Notary Public in aforesaid State and County, came N.A.T. Integrity, Inc., by its _____ to me personally known to be the same person who executed the foregoing instrument of writing and duly acknowledge the execution of same for and on behalf and as the voluntary act and deed of said company, in testimony whereof I have hereunto set my hand and affixed my notarial seal the day and year above written.

Notary Public
My Commission Expires: _____

This plat has been submitted to and approved by the Wichita-Sedgwick County Metropolitan Area Planning Commission, Wichita, Kansas, _____, 1981.

Alvin J. Hennessy, Jr., Chairman
Robert A. Latin, Secretary

This plat approved and all dedications shown hereon are accepted by the City Commission of the City of Wichita, Kansas, _____, 1981.

E.C. Brown, Mayor
Donald C. Gisick, City Clerk

This is to certify that this instrument was filed for records in the Register of Deeds Office at _____ m. on this _____ day of _____, 1981.

Bette F. McCart, Registrar of Deeds
Pat Kettler, Deputy

This plat approved and all dedications shown hereon are accepted by the Board of County Commissioners of Sedgwick County, Kansas, _____, 1981.

Donald E. Gragg, Chairman
Jack Spratt, Commissioner
Tom Scott, Commissioner
Dorothy K. White, County Clerk

Attest: Dorothy K. White, County Clerk

Entered on Transfer Record this _____ day of _____, 1981.

Dorothy K. White, County Clerk

State of Kansas ss
County of Sedgwick ss

I, E.M. Linn, a Professional Engineer in aforesaid State and County, do hereby certify that on this day of _____, 1981, I have caused to be surveyed and platted "G.P-S. 3rd ADDITION," Wichita, Sedgwick County, Kansas, being a replat of Lots 3 & 4, "G.P-S. First Addition," Wichita, Kansas, into Lots, Blocks, and Streets, and more particularly described as:

Commencing at the NE Corner of the NE 1/4 of Section 16, Township 27 South, Range 1 East of the 6th PM; thence bearing S 0° 00' 00" W along the east line of said NE 1/4 a distance of 360.00 feet to the Point of Beginning; thence continuing along said east line bearing S 0° 00' 00" W a distance of 580.00 feet; thence bearing S 89° 00' 00" W a distance of 360.00 feet; thence bearing N 30° 00' 00" W a distance of 400.00 feet; thence bearing N 80° 00' 00" W a distance of 229.16 feet to a point on the east right-of-way line of Beaumont; thence bearing N 0° 00' 00" E along said right-of-way a distance of 229.00 feet; thence bearing N 90° 00' 00" E a distance of 273.43 feet; thence bearing S 0° 00' 00" W a distance of 60.00 feet; thence bearing N 90° 00' 00" E a distance of 625.00 feet to the Point of Beginning, except the east 50.00 feet thereof.

E.M. Linn, P.E.
No. 3684

Know all men by these presents that we, the undersigned property owners of the land as above set forth in the Engineer's Certificate have caused the land to be surveyed and platted into lots, blocks, & streets, the same to be known as "G.P-S. 3rd ADDITION," Wichita, Sedgwick County, Kansas, being a replat of Lots 3 and 4, "G.P-S. First Addition," Wichita, Kansas. Easements, as indicated, for the construction and maintenance of public utilities, are hereby granted. The streets are hereby dedicated to and for the use of the public. All abutters rights of access to and from Woodlawn, over and across the east line of Blocks 1 and 2 are hereby granted, provided, however, that Lot 5, Block 1, and Lot 6, Block 2, shall have access to Woodlawn at one (1) location each, and Lot 3, Block 2 shall have access to Woodlawn at two (2) locations; said locations to be determined by the City Engineer of the City of Wichita, Kansas. All portions of "G.P-S. First Addition" within the above described tract are hereby vacated and replatted by virtue of KSA 1972a, 1972a sup. 12-512 (b).

Slawson Investment Corporation

John F. Essillion
President