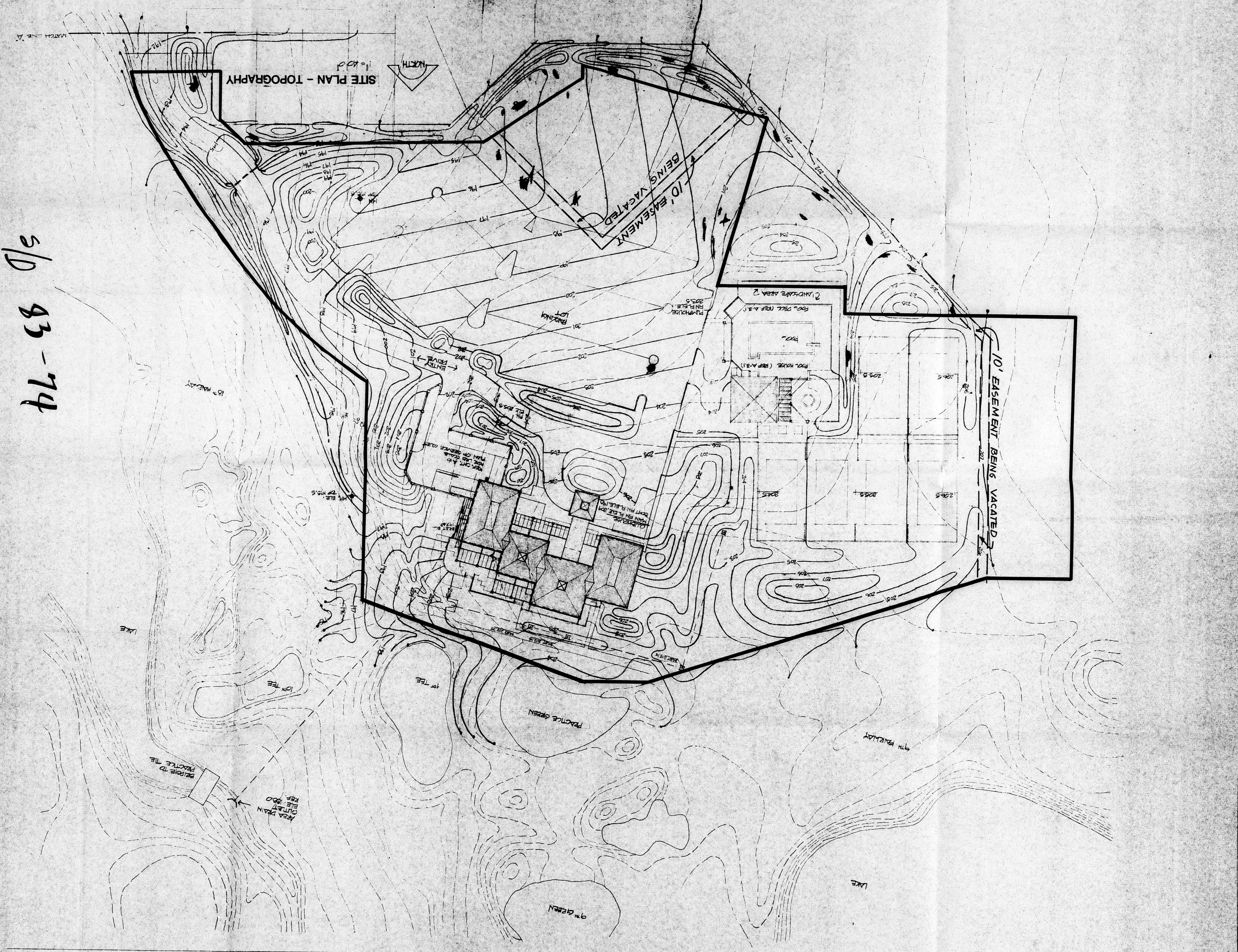


T

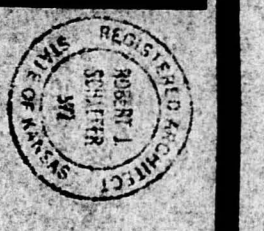


S/D 83-74

P-2
 12/10/04
 DATE
 12/10/04
 15 N.W. 4th St.
 WICHITA, KS 67202
TALLGRASS CLUBHOUSE
 Ritchie Enterprises Inc.
 Wichita Kansas

SSPA
 SHANNON & ASSOCIATES P.A.

ARCHITECTURE
 ENGINEERING
 LANDSCAPE ARCHITECTURE
 PLANNING
 INTERIORS
 ARCHITECTURE
 WICHITA



DATE: 10/20/73
SCALE: AS SHOWN
SHEET: 1 OF 2
PROJECT: TRAILGRASS CLUBHOUSE



TALLGRASS CLUBHOUSE
Ritchie Enterprises Inc.
Wichita, Kansas



ARCHITECTURE
ENGINEERING
LANDSCAPE ARCHITECTURE
PLANNING
INTERIORS
ARCHITECTURE
WICHITA



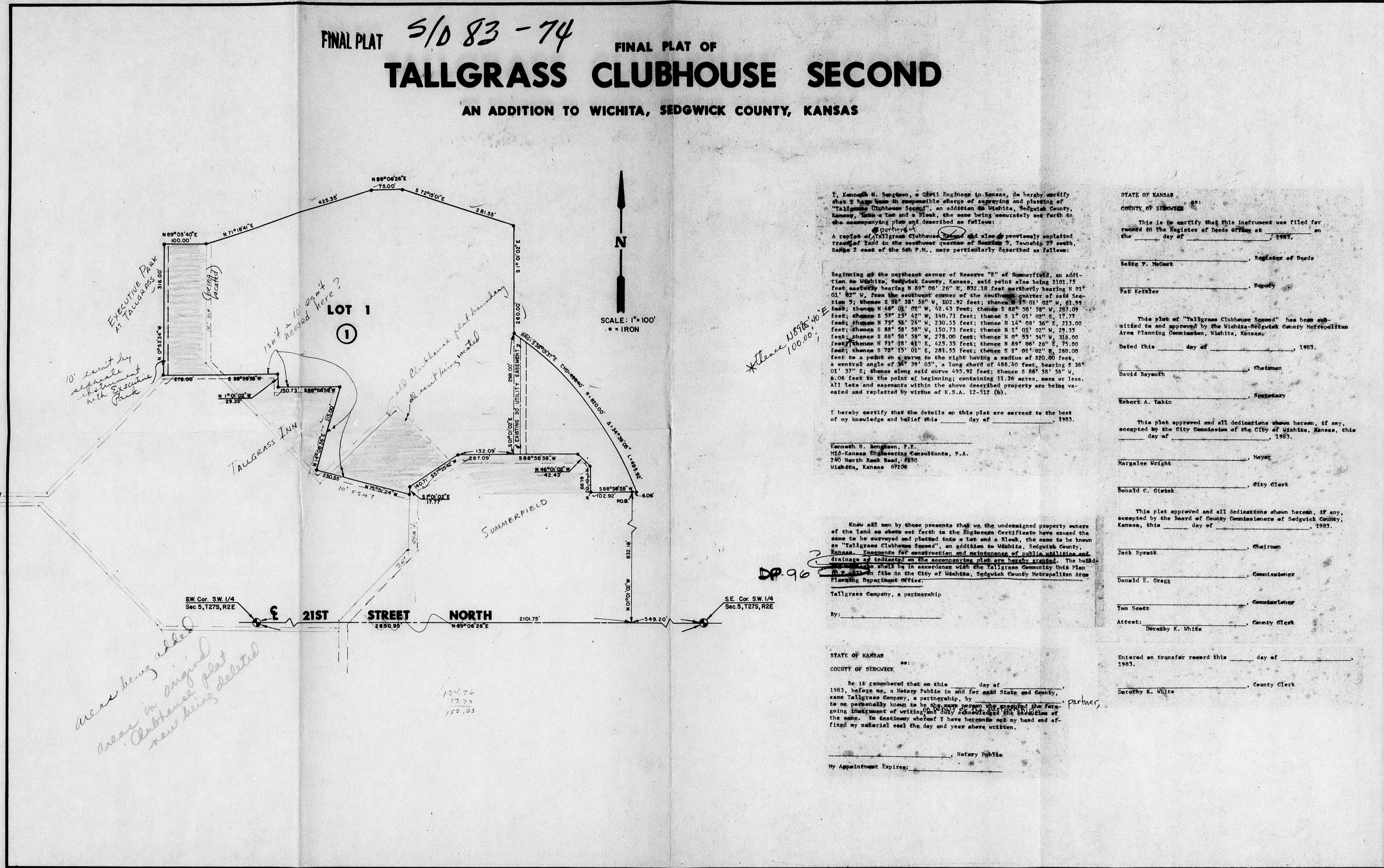
510 83-74
OFFICE COPY
DO NOT REMOVE
SKETCH PLAN



OFFICE COPY
DO NOT REMOVE

This plat approved by
S/D Com 9-1-83 Subject
to conditions in letter of 7-2-83

FINAL PLAT S/D 83-74 FINAL PLAT OF
TALLGRASS CLUBHOUSE SECOND
AN ADDITION TO WICHITA, SEDGWICK COUNTY, KANSAS



I, Kenneth H. Bergman, a Civil Engineer in Kansas, do hereby certify that I have been in responsible charge of surveying and plotting of Tallgrass Clubhouse Second, an addition to Wichita, Sedgwick County, Kansas, from a lot and a block, the same being accurately set forth in the accompanying plan and described as follows:

A portion of Tallgrass Clubhouse Second and also a previously unplatted tract of land in the southeast corner of Section 3, Township 23 north, Range 2 east of the 6th P.M., more particularly described as follows:

Beginning at the northeast corner of Reserve "E" of Summerfield, an addition to Wichita, Sedgwick County, Kansas, said point also being 1101.75 feet easterly bearing N 89° 00' 20" W, 892.38 feet northerly bearing N 01° 01' 02" W, from the southeast corner of the southeast quarter of said Section 3; thence S 89° 58' 58" W, 102.92 feet; thence S 89° 01' 02" W, 81.59 feet; thence N 46° 01' 02" W, 42.43 feet; thence S 88° 58' 58" W, 287.09 feet; thence S 39° 29' 42" W, 140.71 feet; thence S 1° 01' 02" E, 17.79 feet; thence N 72° 58' 58" W, 130.35 feet; thence N 14° 08' 58" E, 112.00 feet; thence S 88° 58' 58" W, 150.73 feet; thence N 1° 01' 02" W, 29.35 feet; thence S 88° 58' 58" W, 178.00 feet; thence N 09° 25' 58" W, 118.00 feet; thence N 71° 38' 43" E, 525.35 feet; thence N 89° 06' 26" E, 75.00 feet; thence S 72° 15' 01" E, 281.55 feet; thence S 1° 01' 02" W, 260.00 feet to a point on a curve to the right having a radius of 820.00 feet, a central angle of 38° 39' 05", a long chord of 488.40 feet, bearing S 38° 01' 37" E, thence along said curve 492.92 feet; thence S 88° 58' 58" W, 4.06 feet to the point of beginning, containing 11.26 acres, more or less. All lots and easements within the above described property are being vacated and replatted by virtue of S.P.A. 12-312 (8).

I hereby certify that the details on this plat are correct to the best of my knowledge and belief this _____ day of _____, 1983.

Kenneth H. Bergman, P.E.
110-Kansas Engineering Consultants, P.A.
240 North Teak Road, 850
Wichita, Kansas 67206

Know all men by these presents that on the undersigned property owners of the land as shown set forth in the Engineers Certificate have caused the same to be surveyed and platted into a lot and a block, the same to be known as Tallgrass Clubhouse Second, an addition to Wichita, Sedgwick County, Kansas. Expenses for construction and maintenance of public utilities and drainage of streets on the accompanying plan are hereby accepted. The holder of this plat shall be in accordance with the Tallgrass Community Unit Plan as shown in file in the City of Wichita, Sedgwick County Metropolitan Area Planning Department Office.

Tallgrass Company, a partnership
By: _____

STATE OF KANSAS
COUNTY OF SEDGWICK

Be it remembered that on this _____ day of _____, 1983, before me, a Notary Public in and for said State and County, came Tallgrass Company, a partnership, by _____ partner, to me personally known to be the true person who executed the foregoing instrument of writing, and he acknowledged to me the execution of the same. In testimony whereof I have hereunto set my hand and affixed my notarial seal the day and year above written.

Notary Public
My Appointment Expires: _____

STATE OF KANSAS
COUNTY OF SEDGWICK

This is to certify that this instrument was filed for record in the Register of Deeds Office on _____ day of _____, 1983.

Belie P. McGart Register of Deeds

Pat Kothler Deputy

This plat of "Tallgrass Clubhouse Second" has been submitted to and approved by the Wichita-Sedgwick County Metropolitan Area Planning Commission, Wichita, Kansas.

Dated this _____ day of _____, 1983.

David Rayouth Chairman

Robert A. Tahn Secretary

This plat approved and all dedications shown hereon, if any, accepted by the City Commission of the City of Wichita, Kansas, this _____ day of _____, 1983.

Margaret Wright Mayor

Donald C. Gluck City Clerk

This plat approved and all dedications shown hereon, if any, accepted by the Board of County Commissioners of Sedgwick County, Kansas, this _____ day of _____, 1983.

Jack Spratt Chairman

Donald E. Gregg Commissioner

Tom Swett Commissioner

Attest: Dorothy K. White County Clerk

Entered on transfer record this _____ day of _____, 1983.

Dorothy K. White County Clerk

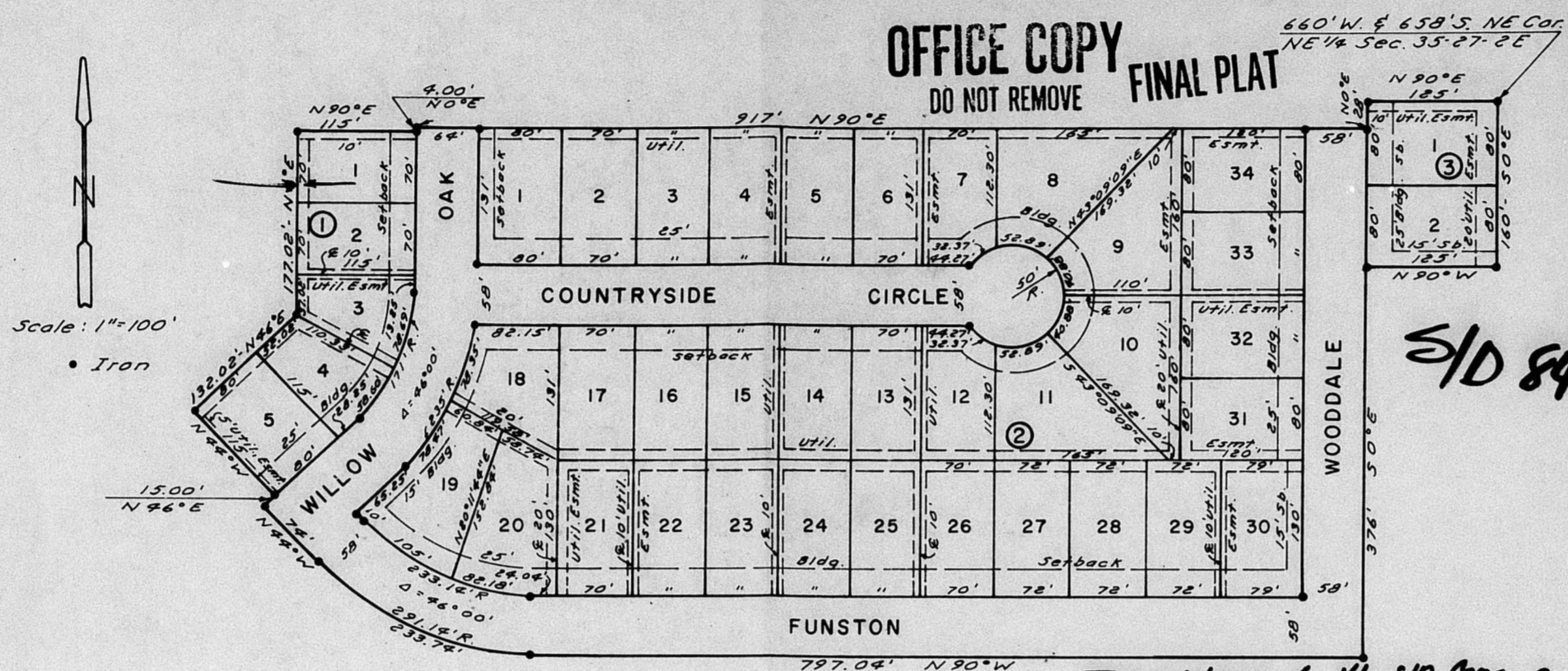
area being added
near in original
Clubhouse plat
new being deleted

*Trace 10895-46
100.00'

134.06
17.22
157.23

83-74
S/D 83-74
9-1-83

TIMBER VALLEY ESTATES 4TH ADDITION
 SEDGWICK COUNTY, KANSAS



This plat of "TIMBER VALLEY ESTATES 4TH ADDITION," Sedgwick County, Kansas, has been submitted to and approved by the Wichita-Sedgwick County Metropolitan Area Planning Commission, Wichita, Kansas, dated this ___ day of ___, 1984.

Wichita-Sedgwick County Metropolitan Area Planning Commission
 _____ Chairman
 _____ Secretary

This plat approved and all dedications shown hereon accepted by the Board of City Commissioners, Wichita, Kansas, this ___ day of ___, 1984.

 _____ Mayor
 _____ City Clerk

This plat approved and all dedications shown hereon accepted by the Board of County Commissioners, Sedgwick County, Kansas, this ___ day of ___, 1984.

 _____ Chairman
 _____ Commissioner
 _____ Commissioner
 _____ County Clerk

Entered on transfer record this day of ___, 1984.
 _____ County Clerk

This plat app. by the SIO Comm on 4/15/84 sub. to letter dated 4/15/84.

State of Kansas 35.5
 Sedgwick County 35.5
 We, Baughman Company, P.A., Surveyors in aforesaid county and state, do hereby certify that we have surveyed and plotted "TIMBER VALLEY ESTATES 4TH ADDITION," Sedgwick County, Kansas, and that the accompanying plat is a true and correct exhibit of the property surveyed, described as commencing at the NE corner of the NE 1/4 of Section 35, T27S, R2E of the 6th P.M., Sedgwick County, Kansas; thence westerly along the north line of said NE 1/4, bearing N 90° W, 660 feet; thence S 0° E, 650 feet to the point of beginning; thence S 0° E, 160 feet; thence N 90° W, 125 feet; thence S 0° E, 376 feet; thence N 90° W, 797.04 feet to the P.C. of a curve to the right with a radius of 291.14 feet and a central angle of 44° 00'; thence northwesterly, along said curve, 233.74 feet to the P.T. of said curve; thence N 44° W, 74 feet; thence N 46° E, 15 feet; thence N 44° W, 115 feet; thence N 46° E, 132.02 feet; thence N 0° E, 17.02 feet; thence N 90° E, 115 feet; thence N 0° E, 8 feet; thence N 90° E, 917 feet to the point of beginning.

Date _____

 Baughman Company, P.A.

 Surveyor

Know all men by these presents, that we, the undersigned, have caused the land described in the surveyors certificate to be plotted into lots, blocks and streets to be known as "TIMBER VALLEY ESTATES 4TH ADDITION," Sedgwick County, Kansas. The easements are hereby granted as indicated for the construction and maintenance of public utilities. The streets are hereby dedicated to and for the use of the public.

Timber Valley, Inc., a Kansas Corporation

 President

State of Kansas 35.5
 Sedgwick County 35.5
 This is to certify that this plat has been filed for record in the Office of the Register of Deeds this ___ day of ___, 1984, at ___ o'clock, ___ M., and is duly recorded.

 _____ Register of Deeds
 _____ Deputy

State of Kansas 35.5. The foregoing instrument was acknowledged before me this ___ day of ___, 1984, by W.E. Lusk, Jr., President of Timber Valley, Inc., a Kansas Corporation, on behalf of the Corporation.

 Notary Public
 My Commission Expires _____

S/D 84-31