

SCZ-0024

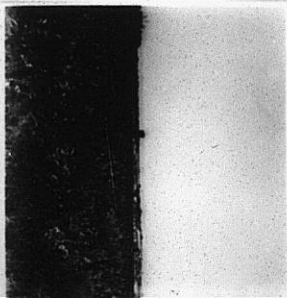
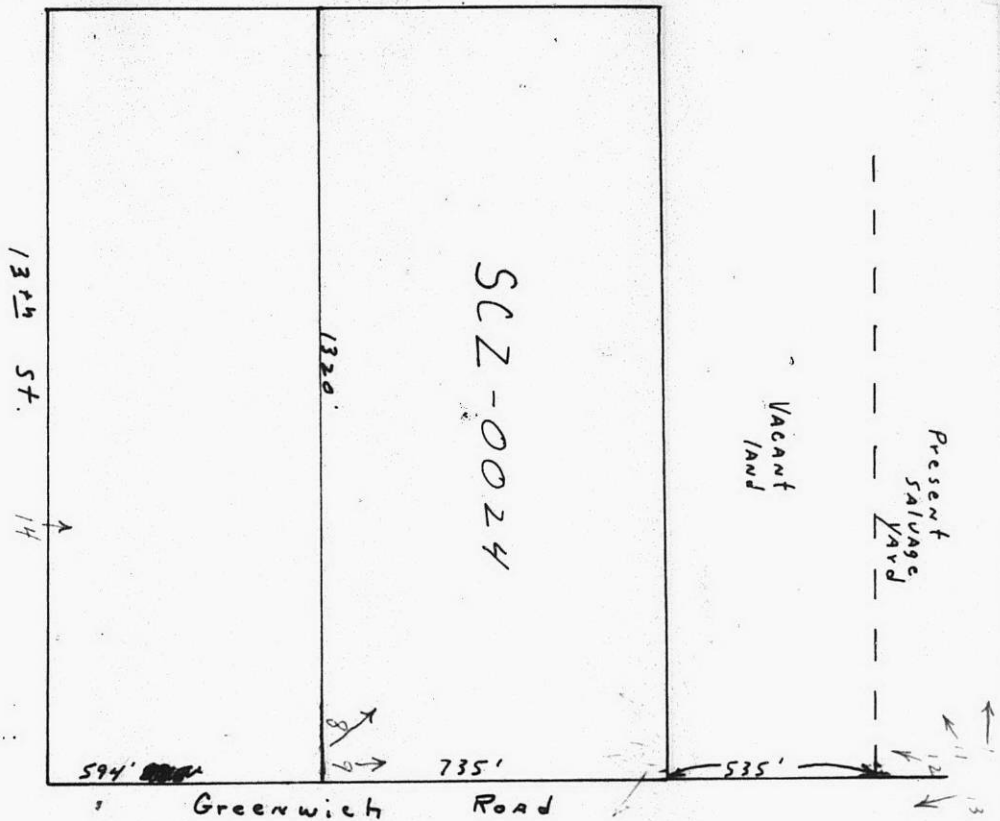
NO. SCZ-0024 R-1 & LC to F
Desc WS Greenwich-in an area bet. 13th & 21st
BY Beech Aircraft
DOA BODY ACTION NOTICES
11-20-58 MAPC Approve
11-26-58 BCoC "

CLOSED

RESOLUTION NO. _____ PUBLISHED 7-14-60
T21-202

311

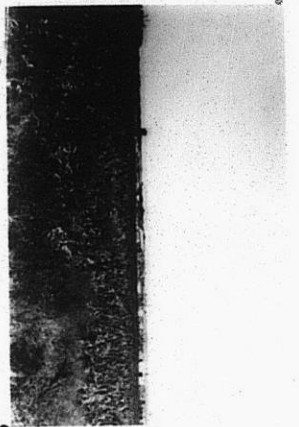
34x



STE

XSTE

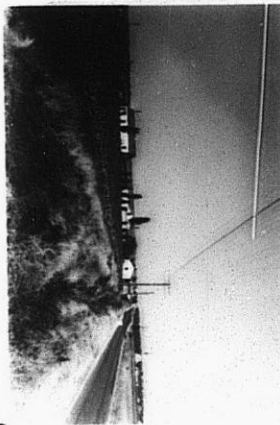
Greenwich Road



8



10



6



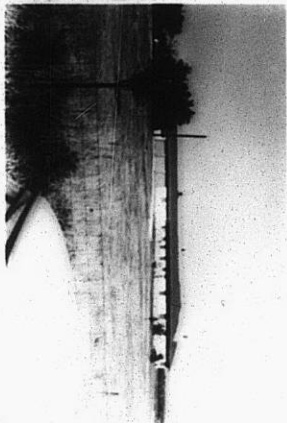
11



12



13



14

SCZ-0024

310

34x