

SC2-0103

NO. SCZ-0103 "R-1" TO "LC"

DESC AREA ON THE EAST SIDE OF RIDGE ROAD BETWEEN
CENTRAL AND 13TH STREETS

BY ARTHUR-WALTER BORST, 802 N. RIDGE RD. WH 3-0494
DOA BODY ACTION NOTICES

6 Oct 60 MARC Approve to R & deny LC

13 Oct 60 Bd. Com. Approve

20 Oct 60 MARC Consider C.U. approve

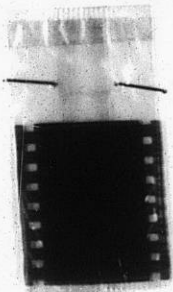
22 Oct 60 Bd. Com. " " Approve

RESOLUTION NO. _____ PUBLISHED R-16R - 150 Oct 24, 1960

file discarded 2-19-82

131

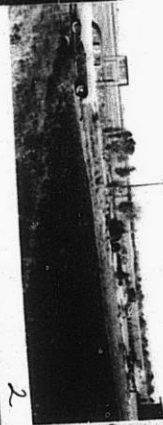
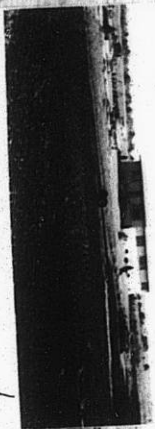
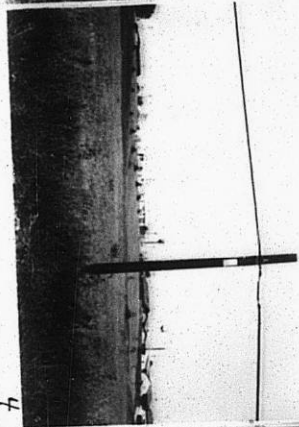
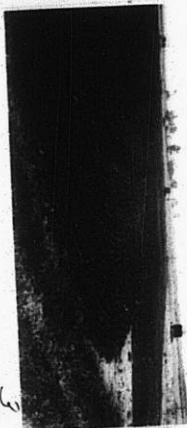
132



WEST SIDE NAWENT AREA

TAKEN 9-1-60

SC 2-0103



112

112