

SCZ 104

NO. SCZ-0104 R-I TO E

DESC ON THE EAST SIDE OF HOOVER BETWEEN HARRY AND

PAWNEE - 2060 SOUTH HOOVER

BY EVERETT D. & NADINE J. BALLARD, 2060 S. HOOVER, WH34511
DOA BODY ACTION NOTICES

10-6-60 mARC approve

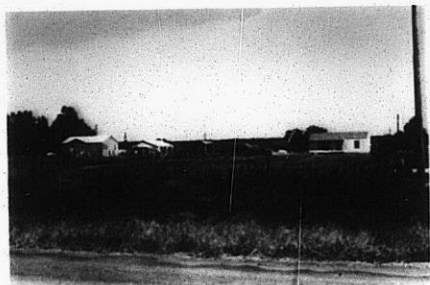
12-13-60 Bd Colan by frame

file discarded 2-19-82

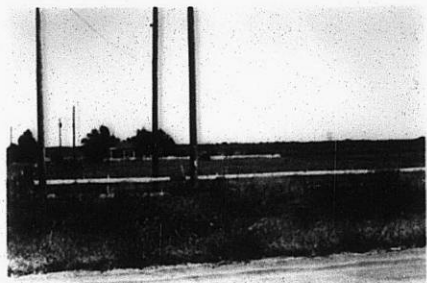
RESOLUTION NO. _____ PUBLISHED Oct 24, 1960

RE

RE



18



19

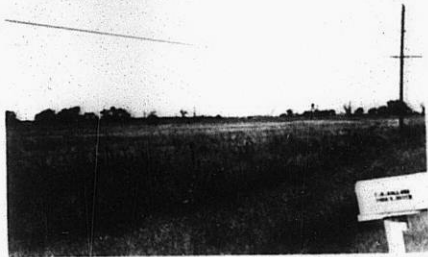
SC2-0104



20



1



2

311

XBE