

SCZ-0109

NO. SCZ-0109 "LC" TO "C"
DESC NORTHWEST CORNER OF KELOGG AND WEBB ROAD
KENNETH PRINGLE, JR. AGNET
BY K. T. WIDEMANN, 233 COURTLEIGH MU 35252
DOA BODY ACTION NOTICES

10-20-60 MAP *affine*

10-27-60 B & C *affine*

file discarded 2-19-82
RESOLUTION NO. 27 Oct 60 PUBLISHED 11-7-60

318

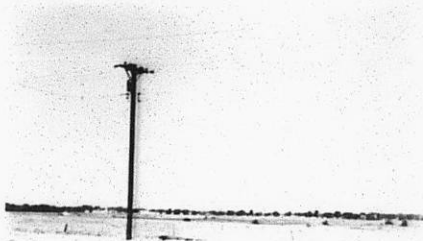
34X

E. Kellogg & Co. Inc. 1945
New York, N. Y.

SC2-0109



1



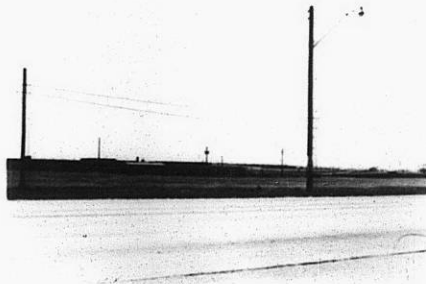
2



3



4



5

310

34x