

NO. SCZ-0203

"C" to "R-1"

DESC. On area on the west side of Maize Road in an area  
north of U. S. Highway 54

BY: Dairy Land, Inc., by Robert H. Nelson

D.O.A.

BODY

ACTION

NOTICES

1-12-67

MAPC

Approve "R-1"

1-25-67

LLC

Approved "R-1"

Closed 1-25-67

file discarded 2-23-82

RESOLUTION NO.:

none

PUBLISHED:

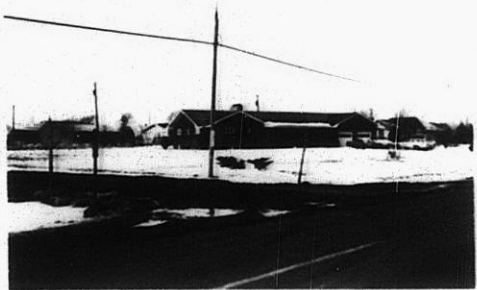
2-8-67

T9-202

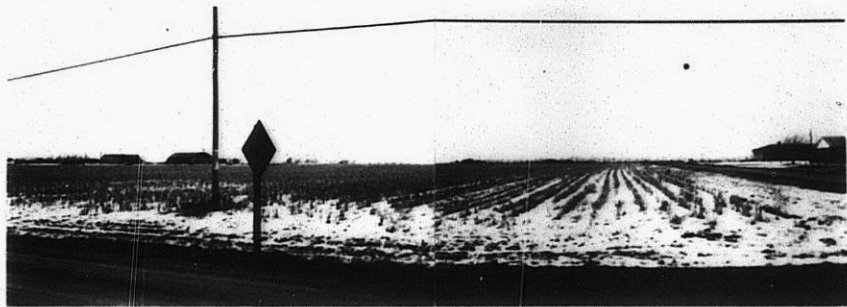
SCZ - 0203

TE

TE



1



2.



3.



4.

562-0203

399

399