

NO. SCZ-0228

"LC" to "C"

DESC. Northeast corner of west U.S. 54 Hiway and  
Westfield Avenue

BY: Naymon B. Rowden, etal by Arch L. Williams

D.O.A.      BODY      ACTION      NOTICES

5-22-69      MAPC      Approve subject to Ad. 12' ft. R/W & V.R. & D.

6-4-69      B.C.C.      Approve is Recommended

file discarded 2-23-82

RESOLUTION NO.:

PUBLISHED: June 23, 1969

T9-202

Closed

SCZ-0228

131

131

1.

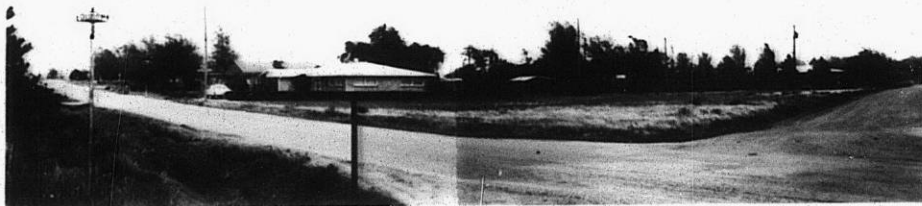


562-0228

2.



3.



4.



310

X4E