

NO. SCZ-0234 "R" to "R-1"

Desc In an area east of Highway K-15, south of 91st Street South.

BY Henry J. Phillips and Judy A. Phillips
OCA BODY ACTION NOTICES

8-11-69 Mulvane P.C.

8-14-69 Derby P.C. Approved sub to platting

8-28-69 MAPC Approved sub to platting with 1/2 yr.

9-10-69 Ed Co Lion Approved as recommended

11-12-81 Closed (Annexed to Derby)

file discarded 2/23-82

RESOLUTION NO. _____ PUBLISHED _____

T21-202

SCZ-0234

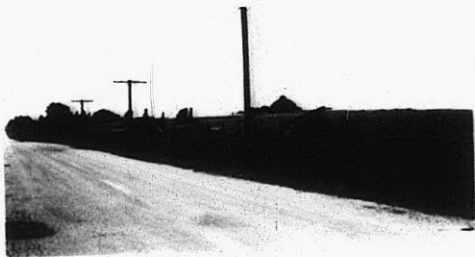
311

311

1.



2.



3.



4.



5.

562-0234

6.



7.



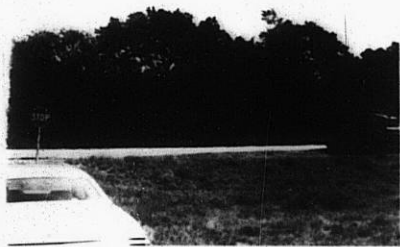
8.



9.



10.



34x

6.



7.



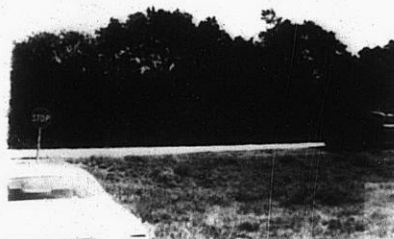
8.



9.



10.



11.



12.



13.



14.



15.



16.



115

115