

20102

NO. Z-0102 "AA" to "IC"

Desc N side of Central in an area bet. Edwards & McLean Blvd

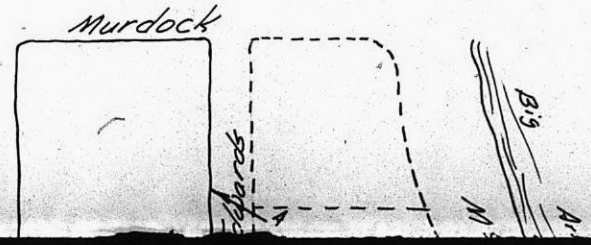
BY J. G. Hinds

DOA	BODY	ACTION	NOTICES
7-17-58	MAPC	Deny	
7-29-58	BCC	Denied	

*file discarded 2-1-82*

RESOLUTION NO. \_\_\_\_\_ PUBLISHED \_\_\_\_\_

T21-201



172

172

70102

NO. Z-0102 "AA" to "LC"

Desc N side of Central in an area bet. Edwards & McLean Blvd.

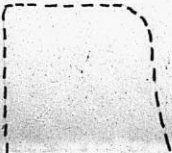
BY J. G. Hinds

DOA	BODY	ACTION	NOTICES
7-17-58	MAPC	Deny	
7-29-58	BCC	Denied	

*file discarded 2-1-82*

RESOLUTION NO. T21-201 PUBLISHED 5

Murdock



B/S

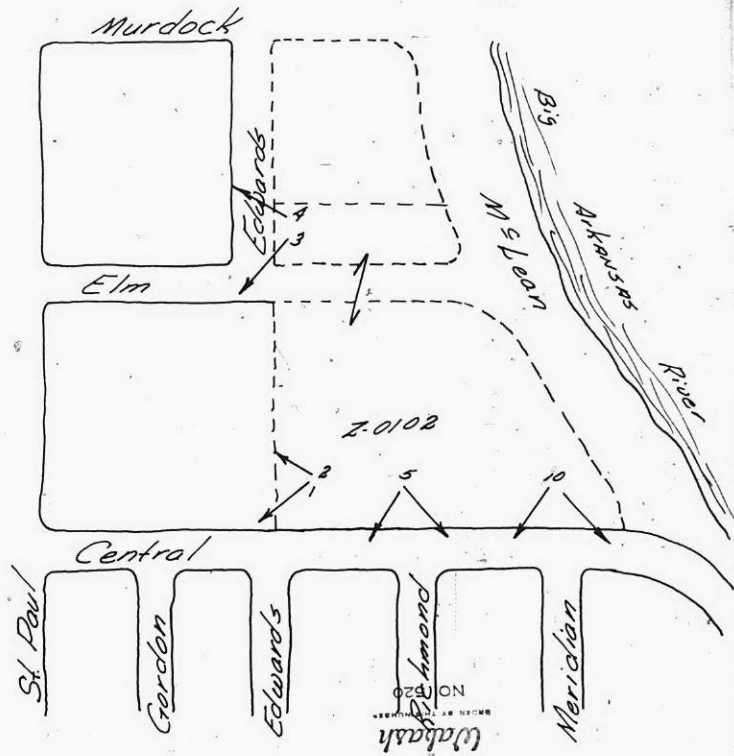
X7E



2



1



2010-2

131

131

2-0102



4



3



Murdock



boards

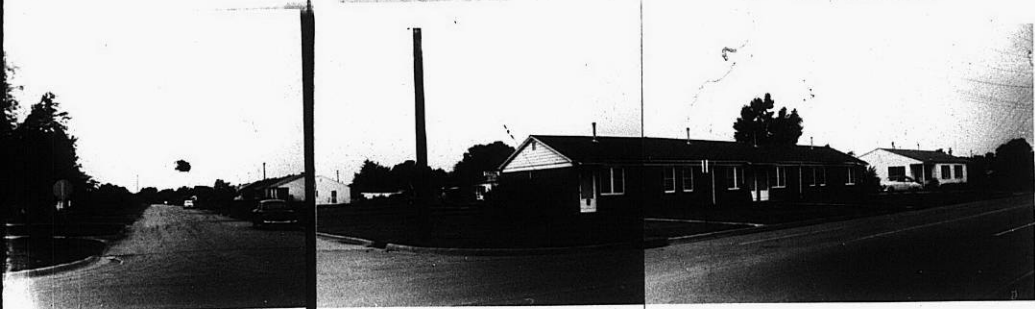
Big

XFB

Z-0102



10



5

B's  
M S L  
A-Kon

319

B4X