

Z-0167

NO. Z-0167 "B" to "LC"

Desc N side of Kellogg bet. Rock Road & E section line

BY Hannah B. Ruth, etal.

DOA BODY ACTION NOTICES

6-4-59 MAPC Approve

6-16-59 BCC Approve

file discarded 2-1-82

RESOLUTION NO. 44 PUBLISHED 6-25-59

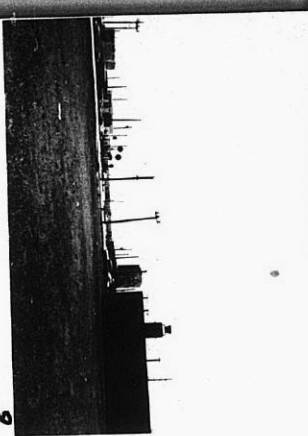
T21-201

319

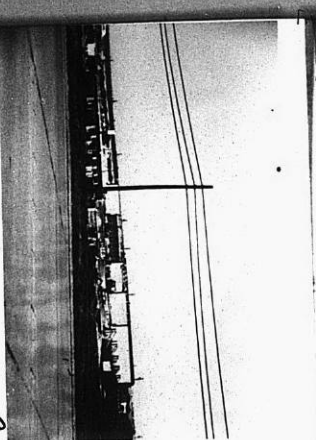
348



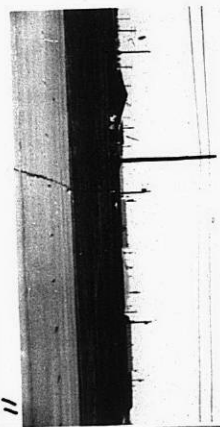
7



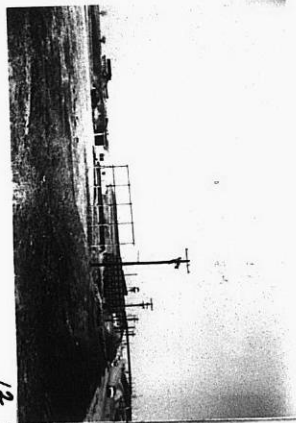
8



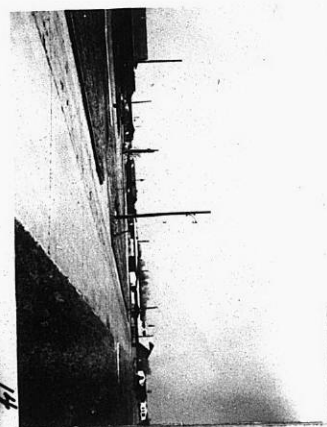
9



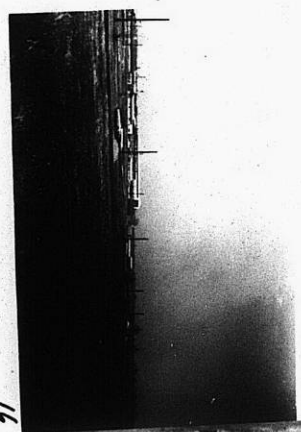
11



12

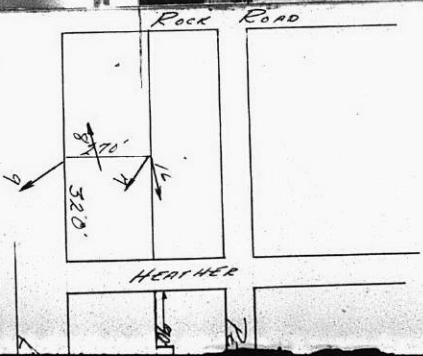


14

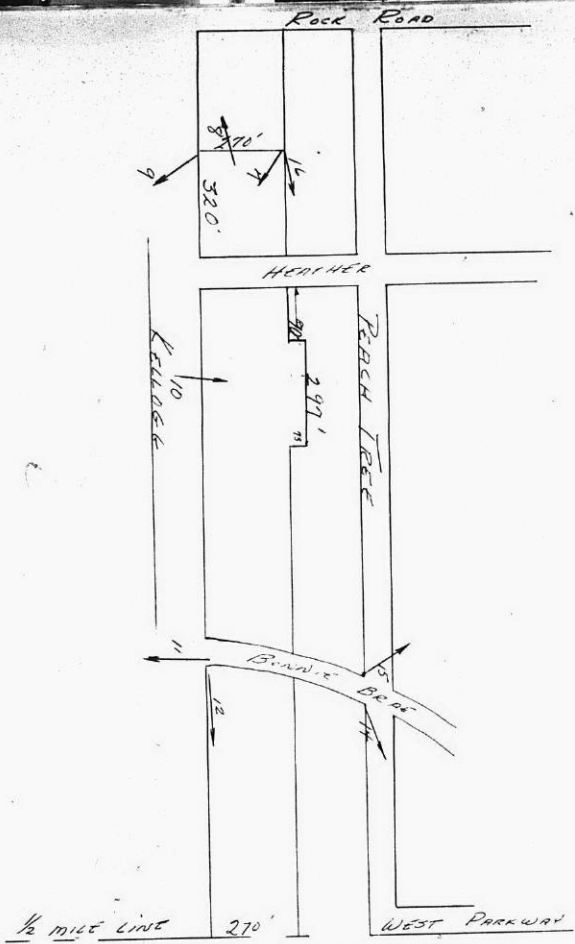


11

2-0167



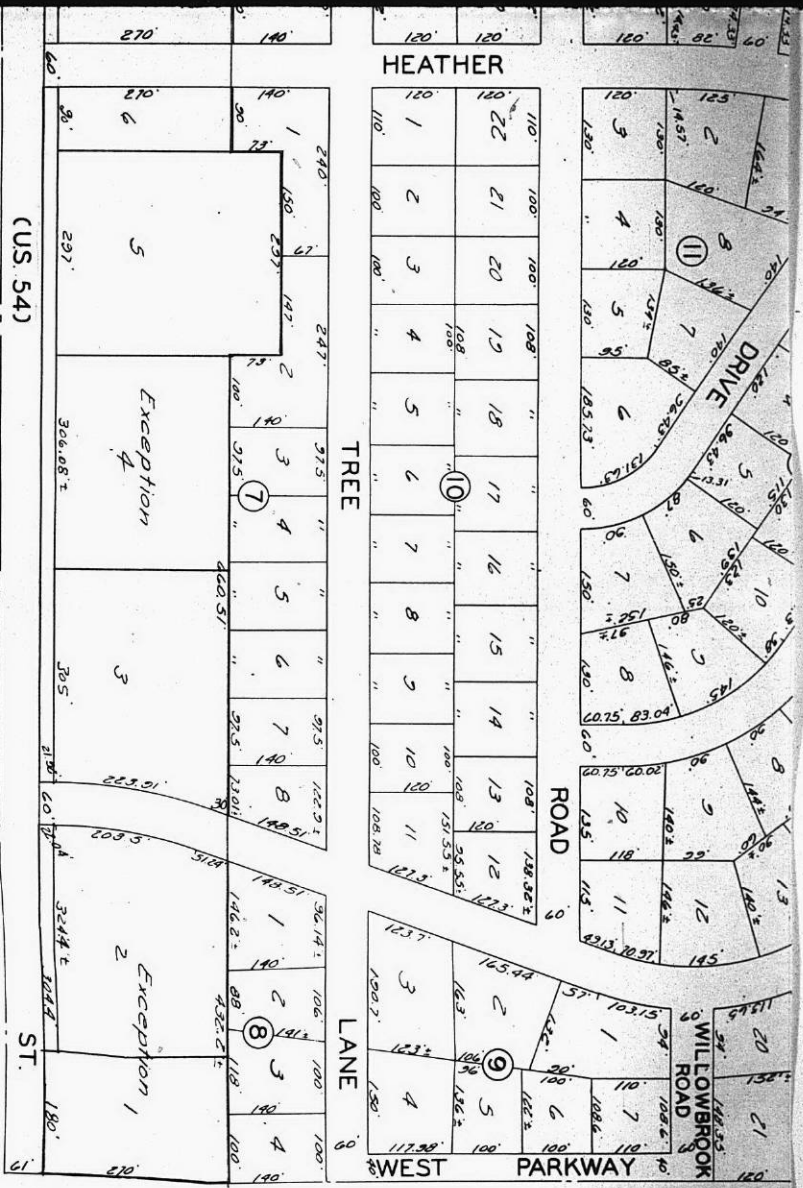
KFE



20161

STE

STE



(US. 54)

Page 210

115
116
117