

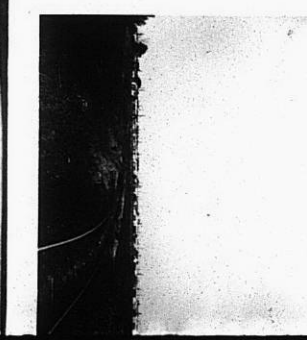
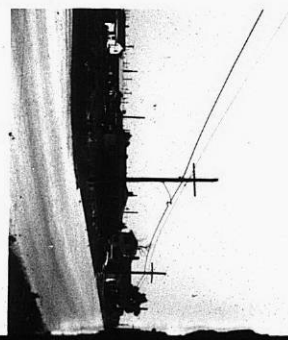
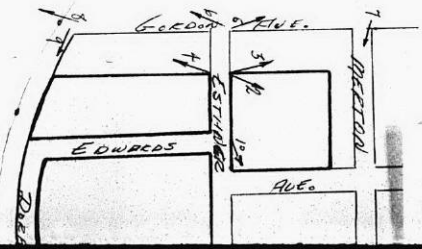
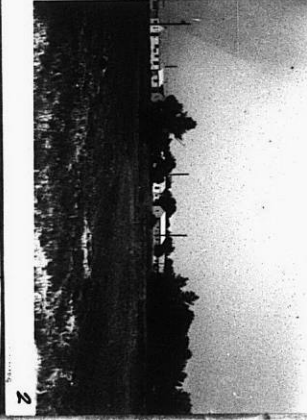
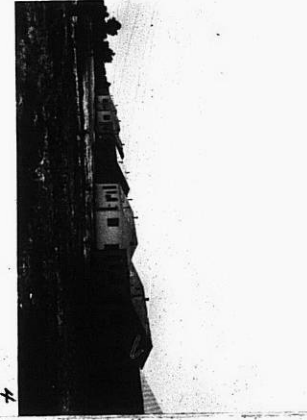
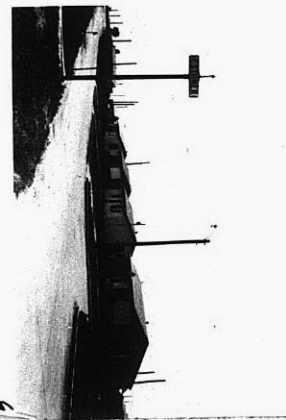
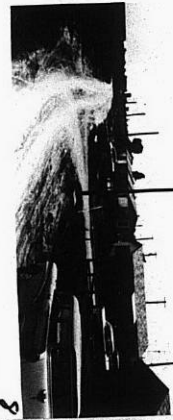
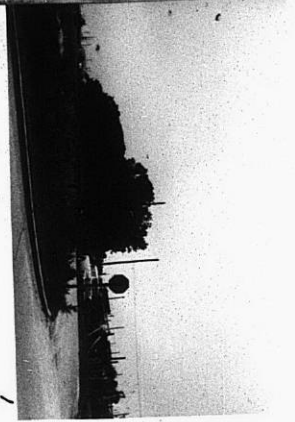
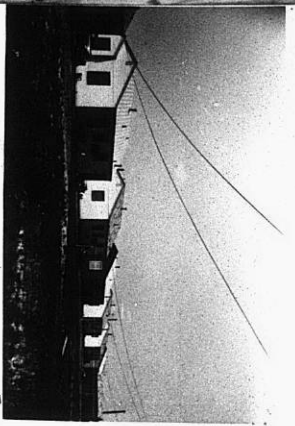
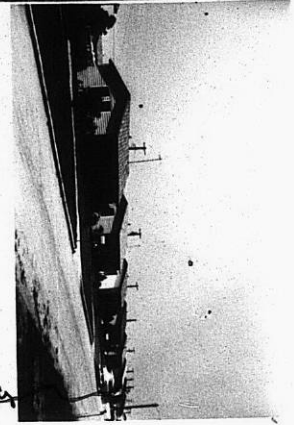
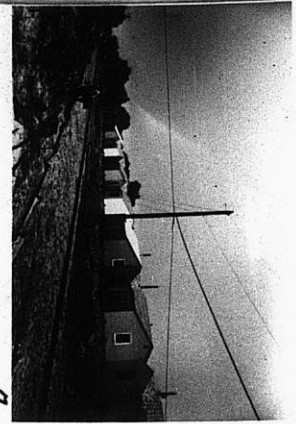
7-0171 2-0171

NO.	Z-0171	"B" to "AA"	
Desc	In an area on both sides of Esthner & bet. bet. Meridian & Gordon		
BY	G. S. Baltzley, Inc.		
DOA	BODY	ACTION	NOTICES
6-18-59	MAPC	Defer	
8-20-59	MAPC	Approve	
9-1-59	BCC	"	
<i>file discarded 5-1-82</i>			
RESOLUTION NO.	50	PUBLISHED	9-11-59
T21-201			

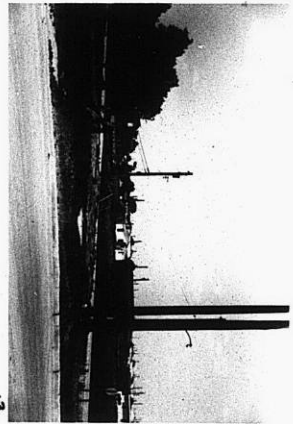
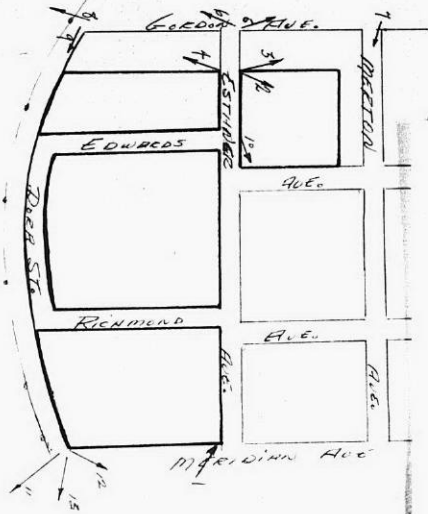
31

34

2-0171



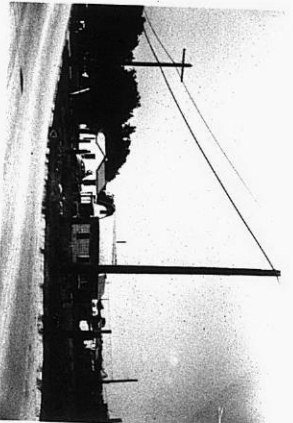
175  
176



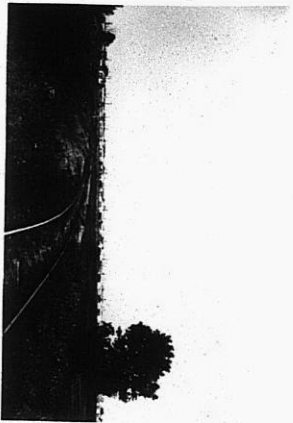
13



11



12



9



10

7-0171 2-0121

314  
XBE