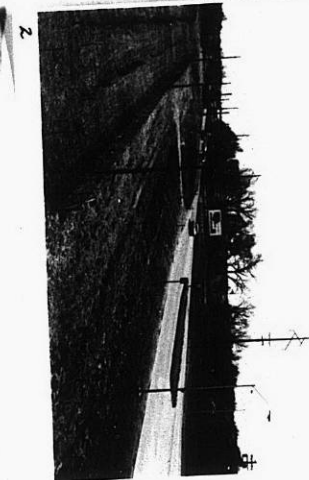
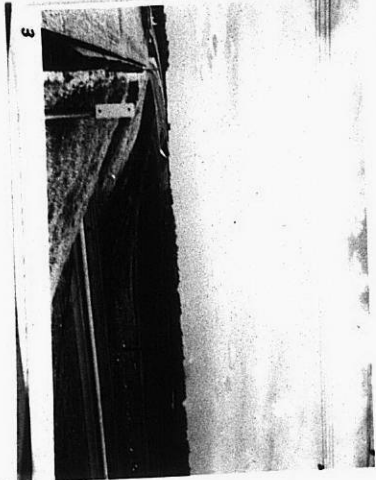
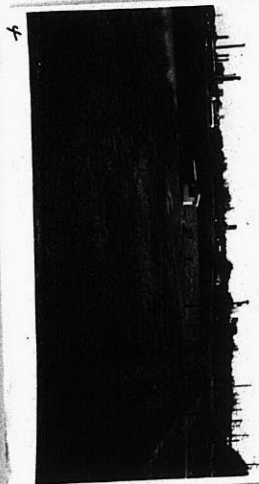


No. Z-0539 AA to C
Desc. In an area E of Seneca and N of McArthur Road
By: Clarkson Development Co. & S.H. Sampson
D.O.A. BODY ACTION
4-16-64 MAPC Approved only to platting
6-9-64 Rec Approved
Closed 6-11-64
file discarded 2-3-82
RESOLUTION No.: 174 PUBLISHED: 6-13-64

Z-0539

XFE
XFE

2-0539



121

121