

NO. Z-0979 "RB" TO "LC"

Desc The southeast corner of Dora and Meridian

BY Edward A. Robinson by Harry Saums  
DOA BODY ACTION NOTICES

4-25-68 MAPC denied

5-14-68 BCC Referred back to mapc  
for reconsideration (amended  
to BB by applicant)

6-13-68 mapc approved "BB"

7-2-68 BCC - applied "BB" except for  
lots 21, 22 & 25, subject to platting

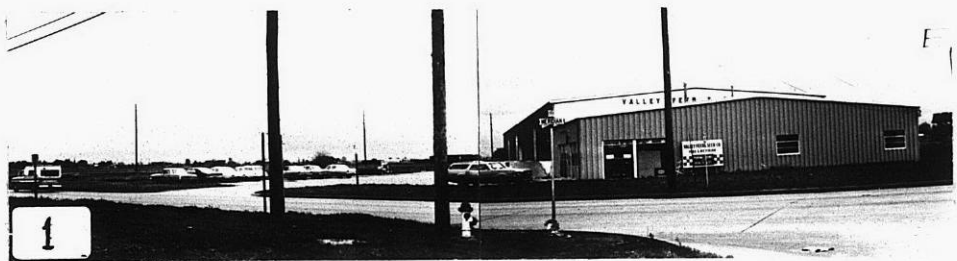
RESOLUTION NO. T 9-201 PUBLISHED file discarded 2-8-82

Z-0979

KTE

KTE

Z-0979



XTE

XTE