

NO. Z-1033

"AA" to "B"

Desc North side of Harry in an area east of Eastmoor.

BY Annamae Garvie by Luis Casado

DOA

BODY

ACTION

NOTICES

9-26-68

MAPC

approved only to platting

10-15-68

BCC

approved as recommended

file discarded 2-8-82

RESOLUTION NO. 30-286
T 9-201

PUBLISHED

Jan 10, 1969

Z-1033

311

341

Z-1033

1.



2.



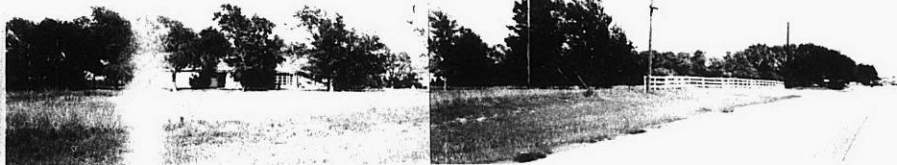
3.



4.



5.



310

347