

NO. Z-1065

AA "IC" to "C"

Desc: East side of Broadway in an area north of I-235 Bypass

BY Richard Allison by Reiss and Godness Engineers

| DOA      | BODY                | ACTION                                    | NOTICES |
|----------|---------------------|---|---------|
| 1-9-69   | MAPC                | <i>approved, subj. to platting</i>        |         |
| 11-13-69 | <i>amended</i> MAPC | <i>approve subj. to platting with ltr</i> |         |
| 1-27-70  | BCC                 | <i>approve as recommended</i>             |         |
|          |                     | <i>file discarded 2-8-82</i>              |         |
|          |                     | <i>Closed 3-8-70</i>                      |         |

RESOLUTION NO. 31-012 PUBLISHED 2-27-70

T 9-201

2-1065

311

34X

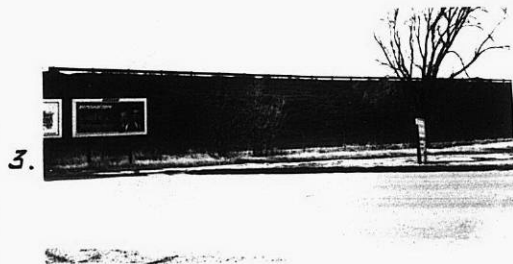
1.



Z-1065



2.



3.



4.



5.

319

34x