

NO. Z-1071 "B" to "BB"

Desc East side of Oak in an area south of Maple.

BY Midwest Land Company
DOA BODY ACTION NOTICES

2-13-69 MAPC Approved

3-11-69 BCC Approved

File discarded 2-8-82

RESOLUTION NO. 30-521 PUBLISHED 3-21-69
T9-201

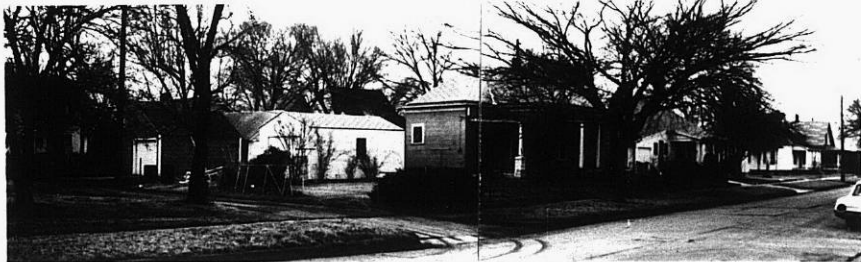
Z-1071

XTE

XTE

Z-1071

1.



2.



3.



4



113

113