

NO. Z-1092 "A" to "IC"

Desc East side of Hillside in an area north of Kellogg.

BY Lloyd J. Thomas by John T. Dush

DOA BODY ACTION NOTICES

4-10-69 MAPC *defused*

5-8-69 *Mapc. approved, sub. to street ROW dedication*

~~5-29-69~~ *B.C.C. approved & recommended*

6-14-73 *MAPC closed*

file discarded 2-8-82

RESOLUTION NO. _____ PUBLISHED _____
T 9-201

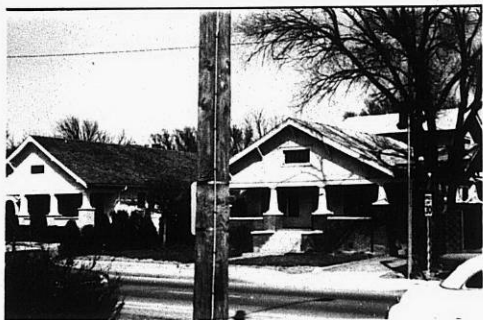
Z-1092

311

311

Z-1092

1.



2.



3.



4.



12E

12E