

NO. Z-1101 AA & A^{BB} to BB+LC

Desc South side of Central between Vassar and Rutan.

BY Central State Bank, etal. by Robt. Nelson
DOA BODY ACTION NOTICES

5-22-69 MAPC approve subject to platting within 1 year
plat to include "BB" & "LC" property at SE corner of Central & Rutan

6-26-69 MAPC Approves subject to platting

7-22-69 BCC. Approved "BB" and "LC"
as recommended.

12-9-69 Ord. on 1st reading on Clarke's Agenda

RESOLUTION NO. 90-890 PUBLISHED 1-5-70
T9-201 file discarded 2-8-82

Z-1101

314

342

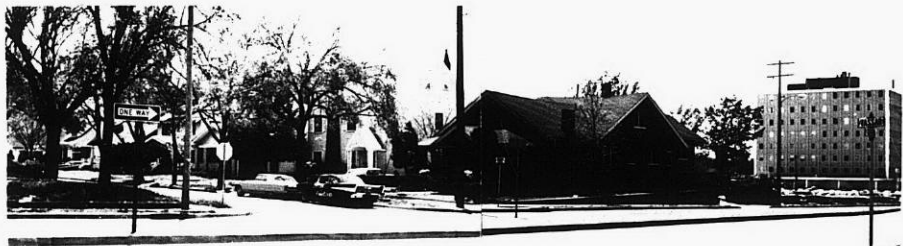
Z-1101



1.



2.



3.



4.



5.



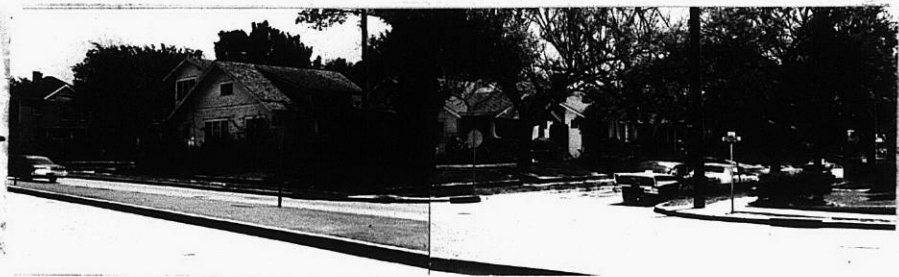
6.



9.

34X

3.



5.

4.



6.



9.

7. 2-1101



10.

8.



11.



12.



ATE

XITE