

NO. Z-1143 "BB" to "LC" (6047)

Desc On the east side of Rock Road in an area south
of Central.

BY Douglas Development, Inc., et al

DOA	BODY	ACTION	NOTICES
10-9-69	MAPC	<i>Approve</i>	
10-28-69	BCC	<i>Approve as recommended</i>	

file discarded 2-8-82

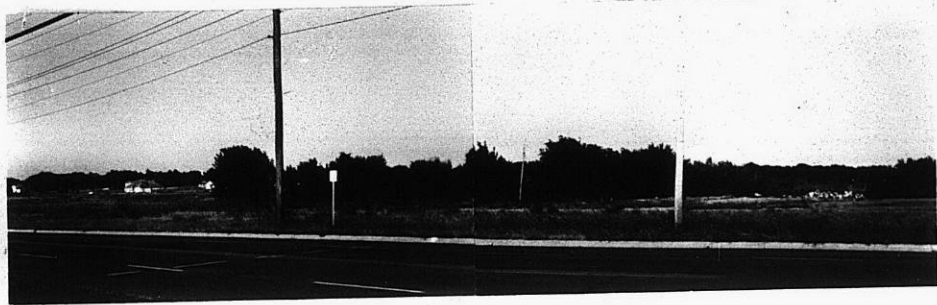
Ord
RESOLUTION NO. 30-938 PUBLISHED Nov 9, 1969
T 9-201

Z-1143

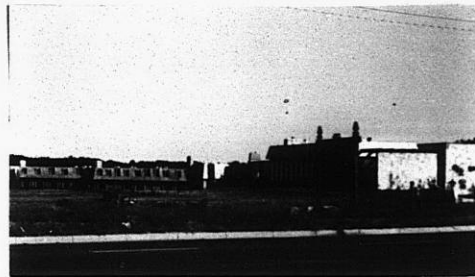
1151

1151

2-1143



1.



2.



3.



4.

STE

STE