

NO. Z-1191 "A" to "LC"

Desc At the northeast corner of Mt. Vernon and K-15.

BY William L. & Pauline L. Houser by Robert M. Moore
DOA BODY ACTION NOTICES

5-14-70 MAPC Deny

6-2-70 ACC Deny

Close

file discarded 2-8-82

RESOLUTION NO. _____ PUBLISHED _____

T 9-201

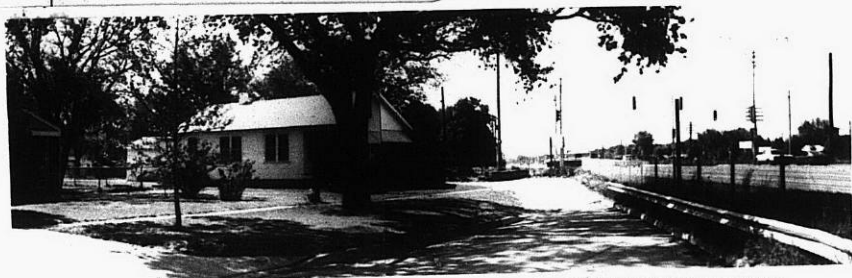
1611-2

131

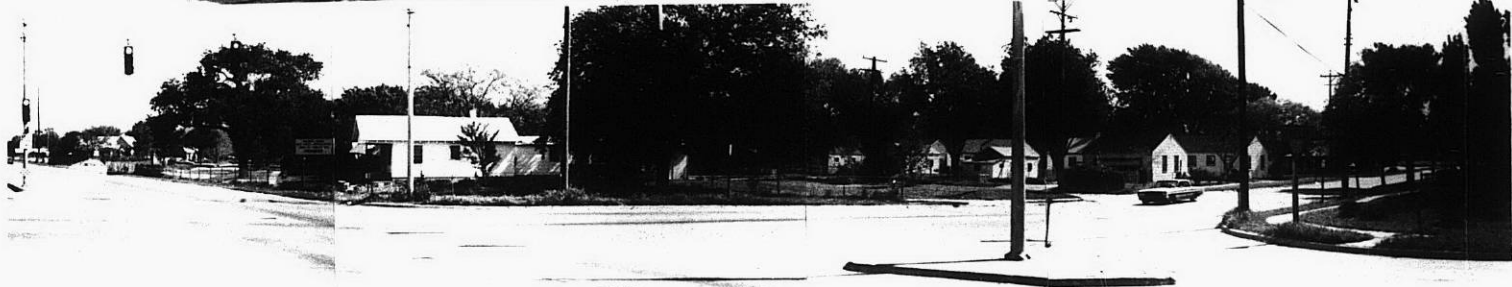
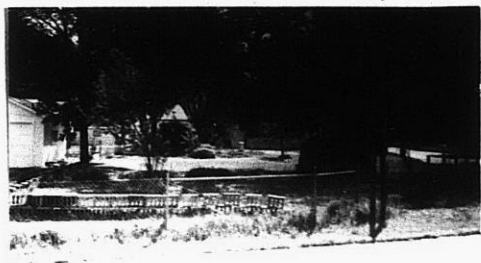
131

2-1191

1.



2.



3.

4.



5.



6.



319

347