

NO. Z-1225 "B" to "LC"

Desc At the northwest corner of 11th and Minnesota

BY St. Marks United Methodist Church (by Paul Gray)

DOA	BODY	ACTION	NOTICES
¹² 11-30-70	MAPC	<i>Refer</i>	

11-30-70 MAPC *Withdrawn by applicant*

Closed 11-30-70

File discarded 2-8-82

RESOLUTION NO. _____ PUBLISHED _____
T 9-201

2-1225

113

113

1.



2-1225

2.



3.



4.



5.



6.

7.



XBE

XBE



4.



5.



6.



7.



8.



9.

2-1225



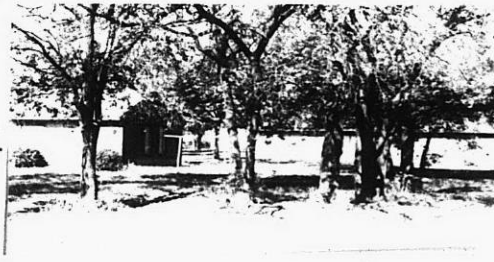
10.



11.



12.



STE

X 1/2