

NO. Z-1313 "A" to "BB"

Desc. At the northwest corner of Dellrose and Pawnee

By Charles J. Case, et. al. MK

DOA	BODY	ACTION
9-9-71	MAPC	deny
9-28-71	BCC	Refer back to Mapc
10- 2 ²⁸ -71	MAPC	deny
11-9-71	BCC	deny

Resolution No. Closed file discarded 2-9-82 Published (T9-201)

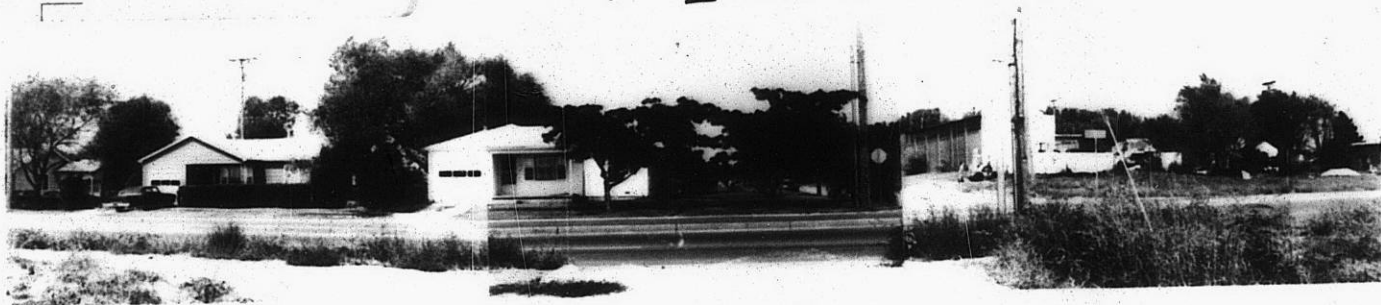
2-1313

319

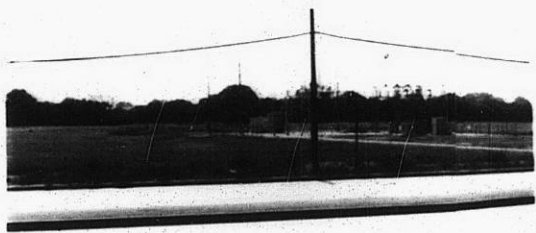
34x

Z-1313

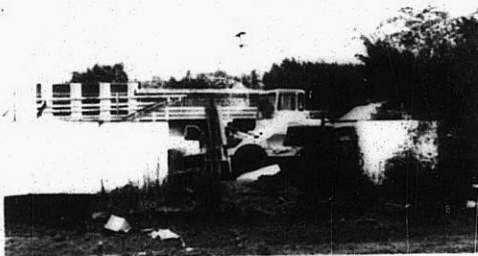
1



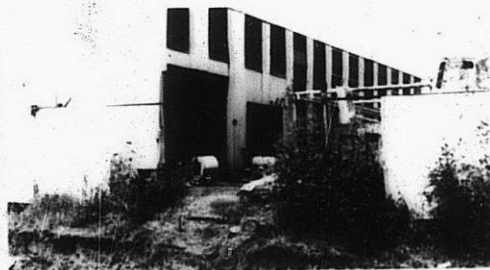
2



3



4



313

313