

NO. Z-1379 "AA" to "E" (5145)

Desc. On the southeast corner of Harry and Baehr
side of Baehr between

Harry and Pathrow

By Wichita Builders, Inc. by Eugene G. Coombs

DOA	BODY	ACTION
-----	------	--------

4-27-72	MAPC	Approve only to platting
---------	------	--------------------------

5-16-72	BCC	Approve as recommended
---------	-----	------------------------

6-13-72	BCC	ord. on 1st reading on
---------	-----	------------------------

		City Clerk's agenda
--	--	---------------------

File discarded 2-9-82

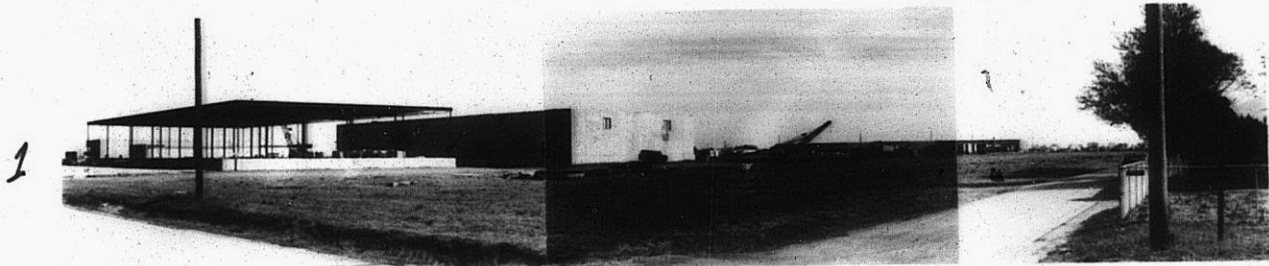
Resolution No. 32-206 Published 6-30-72 (T9-201)

Z-1379

319

347

2-1379



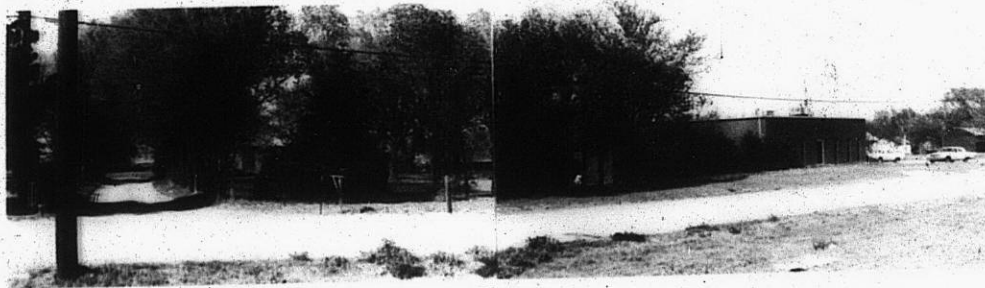
2



3



4



5



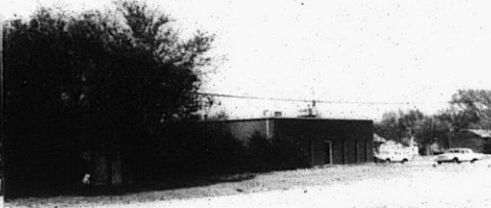
6

23

2



3



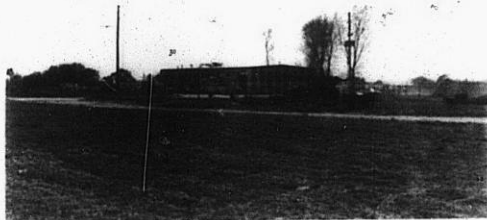
4



5.



6.



7.

8.

9.



10

11

12