

NO. Z-1389 "AA" to "E" 5048

Desc. On the west side of Hoover in an area between
9th Street and I-235 Highway

By Raymond J. & Neva M. Allen by Jerry K. Allen

DOA	BODY	ACTION
<u>5-25-72</u>	<u>MAPC</u>	<u>Approval of 11200' of the 5400' of</u> <u>clean, ally to platting</u>
<u>6-17-72</u>	<u>BCC</u>	<u>approve as recommended</u>

file discarded 29-82

~~Reference~~ Registration No. 32,757 Published 7-17-73 (T9-201)

Z-1389

XTE
XTE

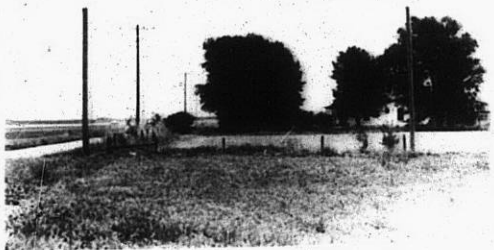
2-1389



1.



2.



3.



4.



5.



6.



7.



8.



9.

2-1389

X 35



6.

7.



8.

9.



2-1389



10.



11.

319

347