

NO. Z-1390 "AA" & "BB" to "LC" (5345)

Desc. On the west side of Seneca in an area between

Lydia and May

By Oliver J. Hotmar, et. al.

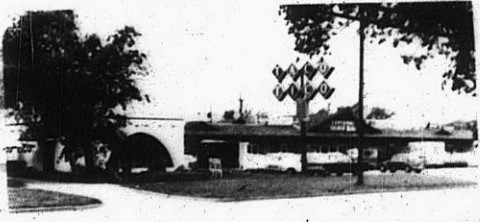
DOA	BODY	ACTION
5-25-72	MAPC	Deny
6-13-72	BCC	Return to MAPC
7-13-72	MAPC	Approve 20' front set back of residential on the north side of residential on "BB" subject to replotting on a 2 lot plot.
2-25-73	BCC	Approved as recommended

Ordinance File discarded 2-9-82
Resolution No. 32-625 Published 4.13.73 (T9-201)

Z-1390

STE

XTE



1.



2.

2-1390



3.

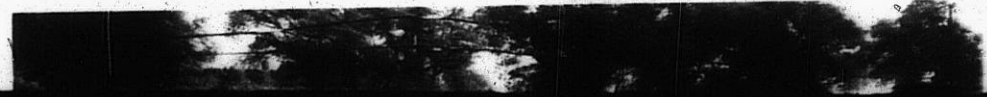
4.

5.



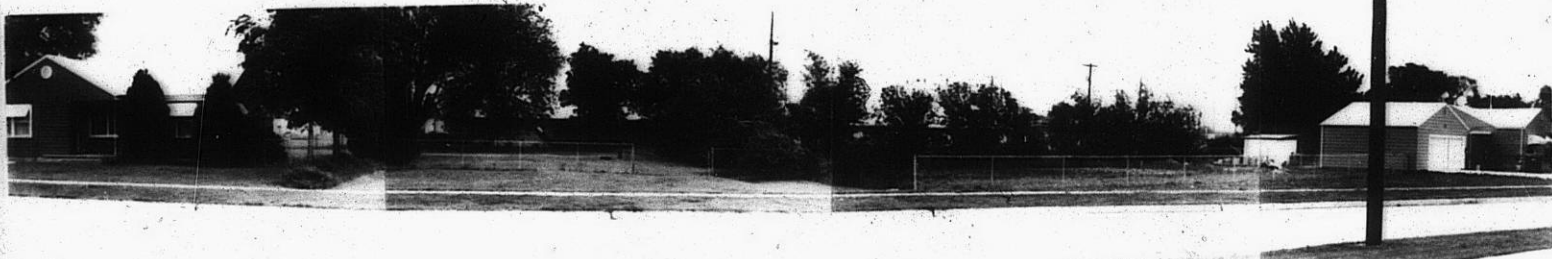
6.

7.



STP

XBE

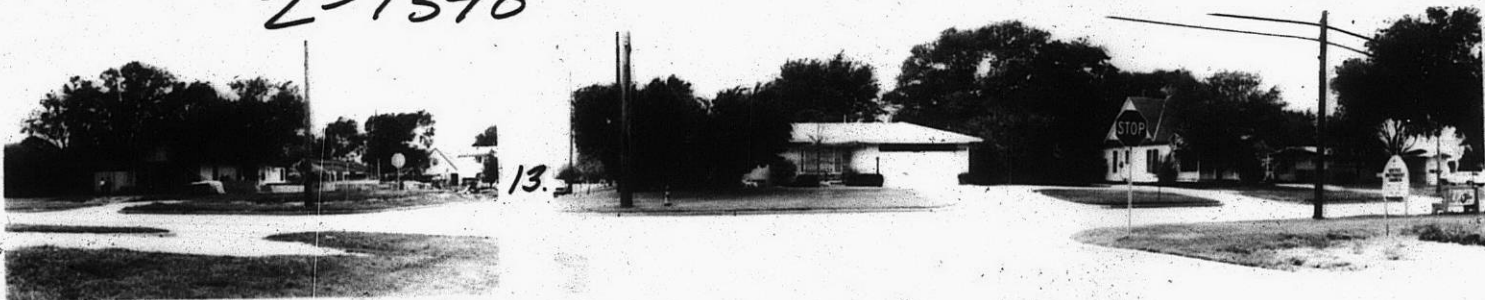


10.



2-1390

12.



13

13E

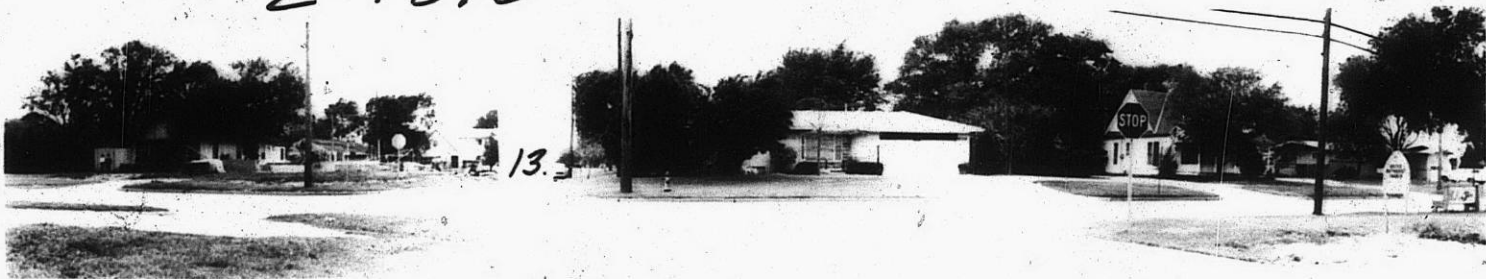
10.



11.

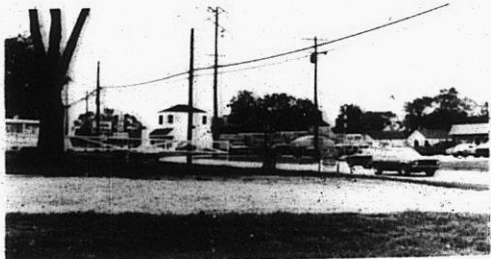
2-1390

12.



13.

14.



15.



NE

NE