

NO. Z-1403

"AA" to "A" (5946)

Desc. On the west side of Longfellow in an area between  
Lincoln and Bayley

By American Land Mark Corp et al by R. L. Smith

DOA BODY ACTION

7-13-72

MAPC

*Approve with replatting*

8-1-72

Bcc

*Approved as recommended*

*file discarded 2-9-82*

Ordinance

Resolution No. 32-336

Published

9.29.72

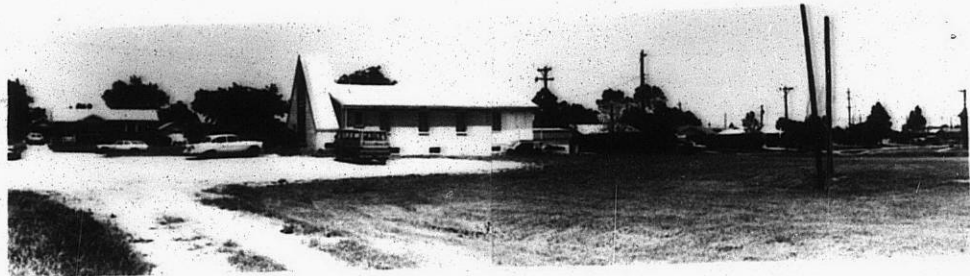
(T9-201)

2-1403

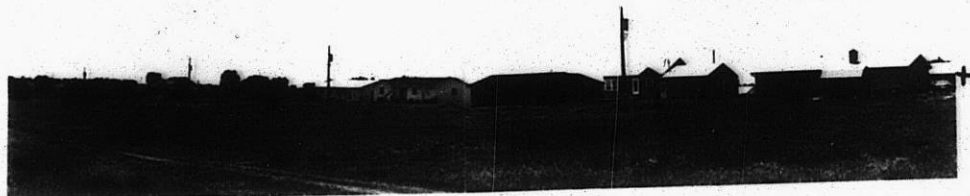
311

34X

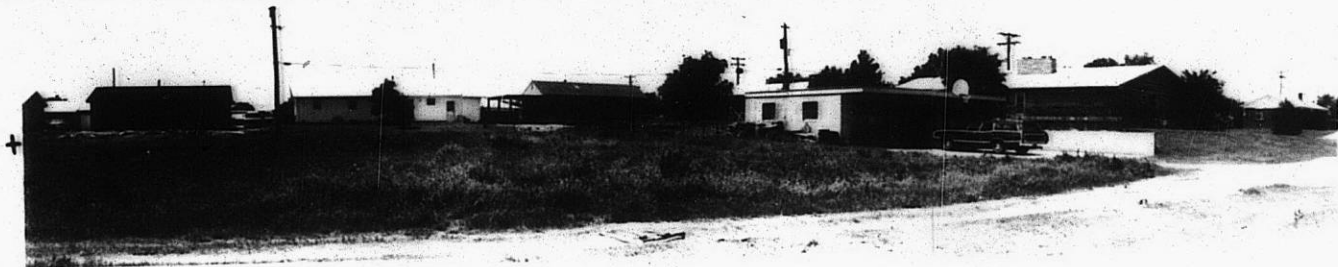
1.



Z-1453



2.



12E

12E