

NO. Z-1409 *Spring Lake* "AA" to "C" and "AA" to "R-6"

Desc. At the northwest corner of East Harry Street and the  
Kansas Turnpike

By Mid Continent National Bank et al

DOA	BODY	ACTION
7-27-72	MAPC	<i>Approved "R-6" and "C"</i>
8-15-72	BCC	<i>Approved as rec</i>

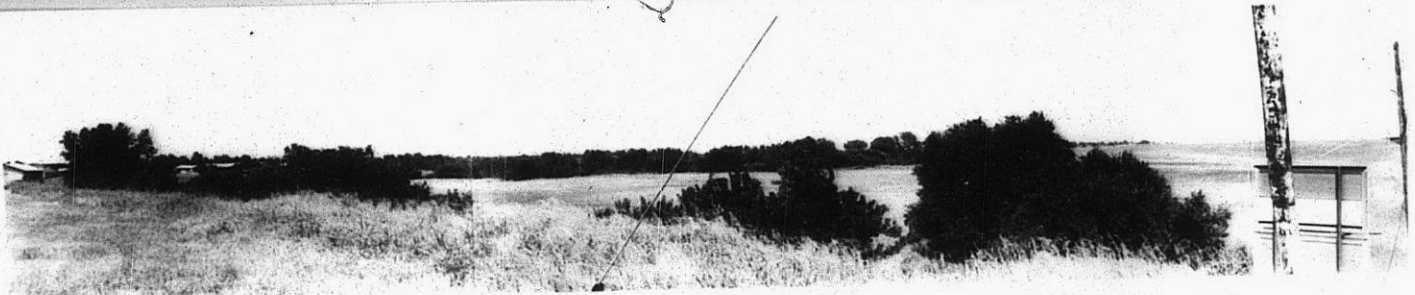
*closed*  
*File discarded 2-9-82*

Resolution No. 36-662 Published 7-11-80 (T9-201)

2-1409

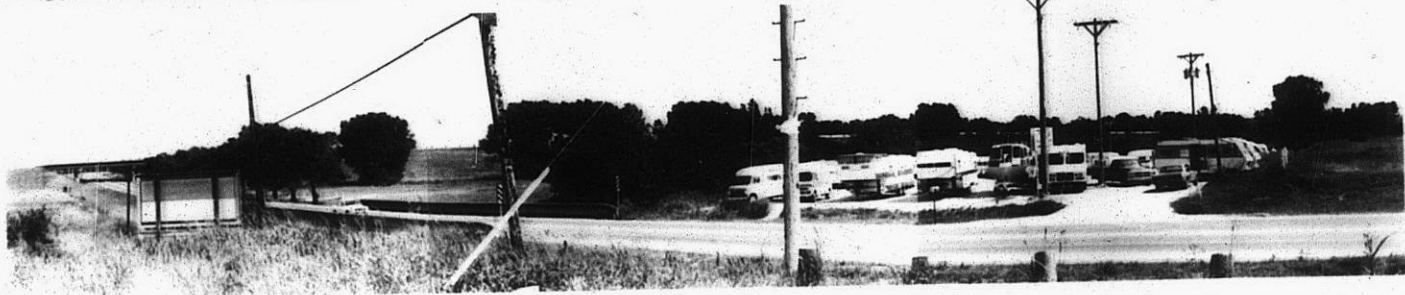
STE  
STE

1.



6041-2

2.



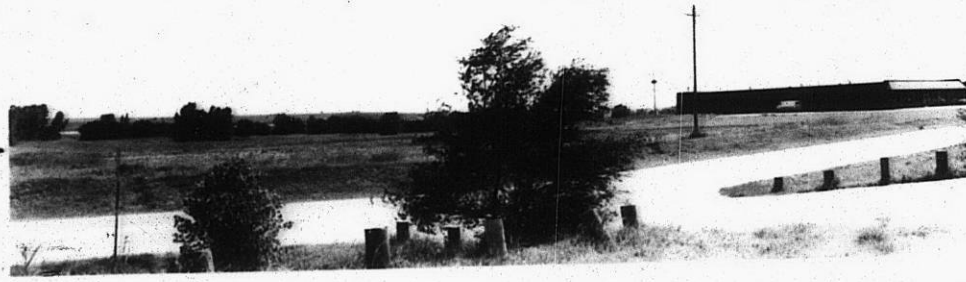
3.



4.



5.



6.



35

35E

5.



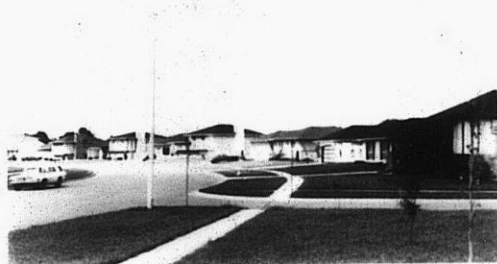
6.



7.



8.



9.



10.



Z-1409

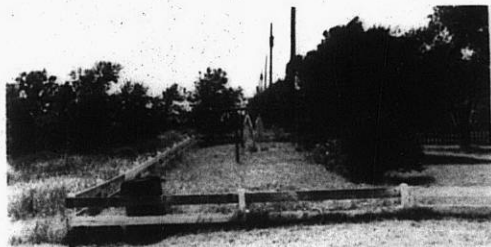


11.



12.

Z-1409



13.

310

X 52

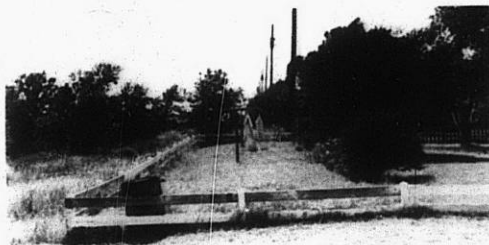


11.



12.

2-1409



13.



14.



15.



16.



17.

310

311