

NO. 2-1412

"AA" to "C"

(5946)

Desc. NW and NE Corners of Harry and Doreen

By Jesse Graham, et al

DOA	BODY	ACTION
<u>8-10-72</u>	<u>MAPC</u>	<u>Approved "LC" subj to conditions</u>
<u>8-29-72</u>	<u>BCC</u>	<u>Approved "LC"</u>

file discarded 2-9-82

Ordinance
Resolution No. 32-327 Published 9-8-72 (T9-201)

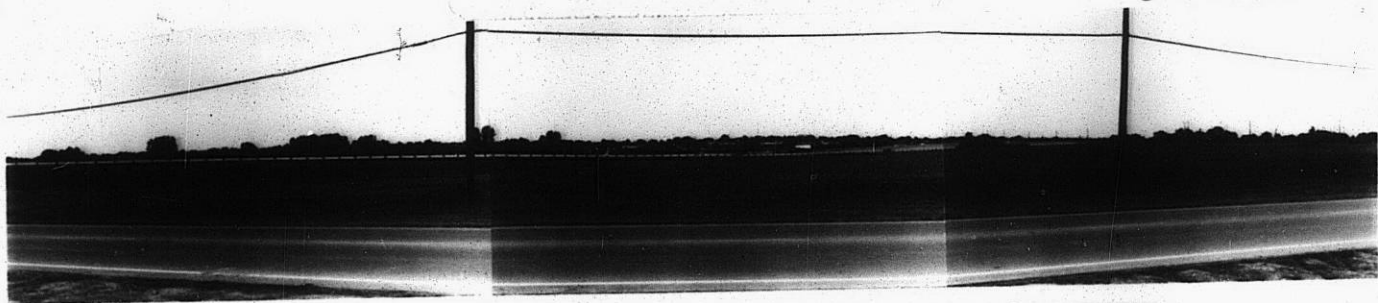
2-1412

319

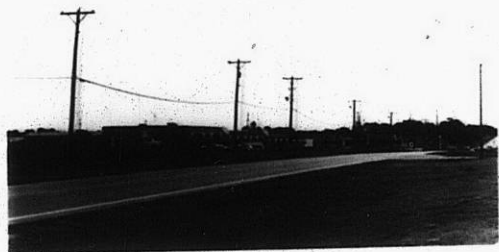
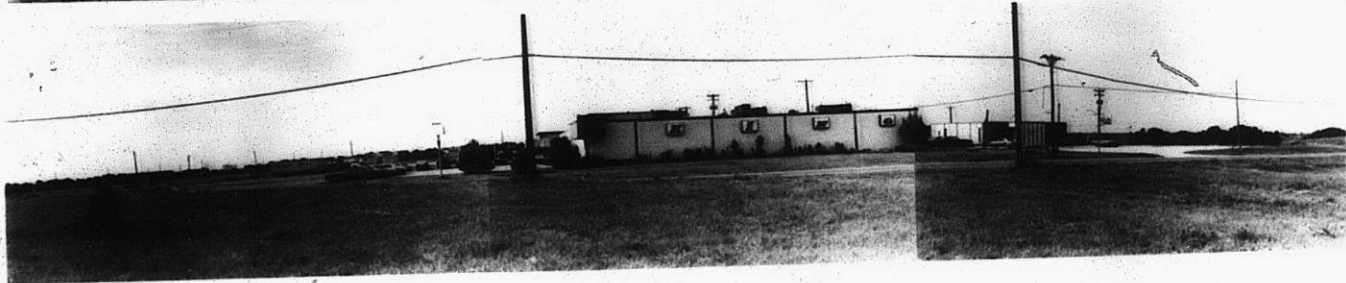
XFE

2-1412

1.



2.



3.



4.



5.

319

34x