

NO. 2-1413 "AA" to "LC" (5048)

Desc. In an area generally located north of Central
and east of Ridge Road

By Myron C. & Sylvia D. Wilbur W.A. Bonwell, Atty.
DOA BODY ACTION

8-10-72 MAPC Approved subj to conditions
8-29-72 BCC Approved

file discarded 2-9-82

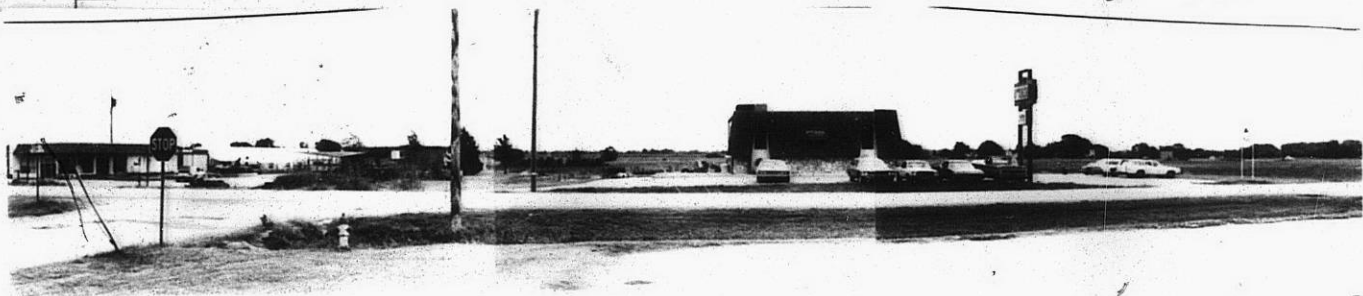
Ordinance
Resolution No. 32-799 Published 8-28-73 (T9-201)

2-1413

319
XBE

2-1413

1.



2.



3.



310

XBE