

NO. Z-1454

"A" to "BB"

Desc. On the North and South side of 13th Street between  
Madison and Spruce

By Othello H. Curry and Elsie Elie McBee by Richard  
Clausen

DOA	BODY	ACTION
11/9/72	MAPC	Deferred
11/27/72	MAPC	Approved S of 13th Denied N of 13th subject to dedications
12/19/72	BCC	Returned to MAPC
1-11-73	MAPC	Approved as amended (subject to conditions)
1-30-73	BCC	Defer 4 weeks
2-20-73	BCC	Approved as amended
Ordinance	3a-557	Published 3.2.73 (T9-201)
Resolution No.		file discarded 2-9-82

Z-1454

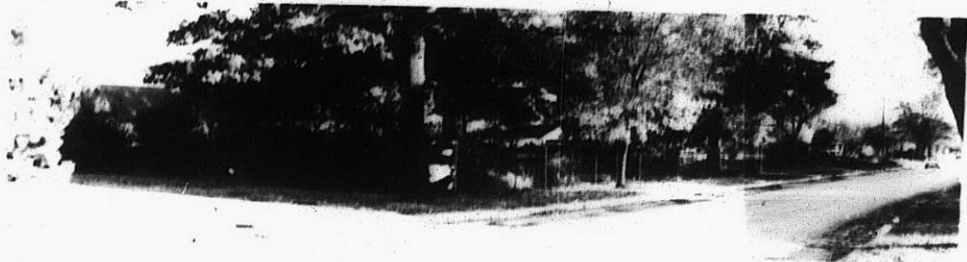
31

31

2-1454



1.



2



3



4

2-1454



5.

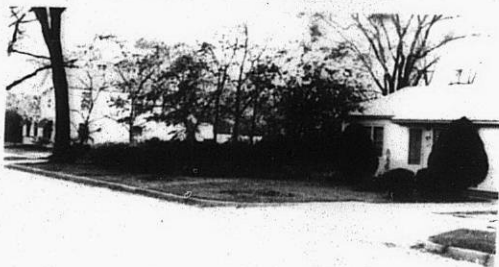
STE

XSTE

3.

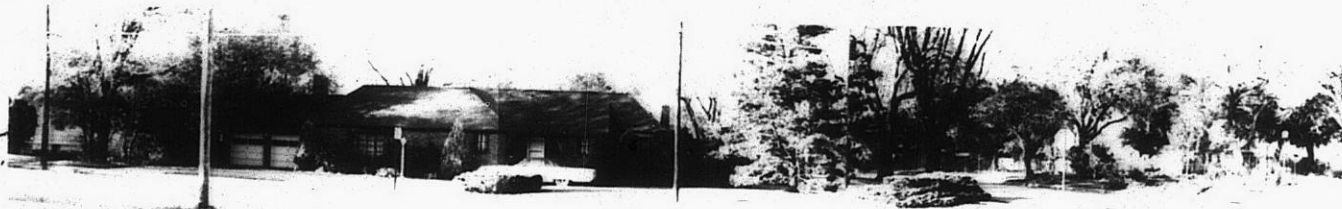


4.



2-1454

5.



7.



8.



9.

10.

NE

NE



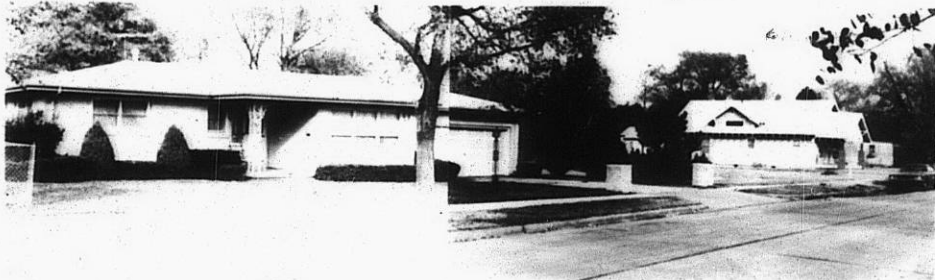
9.

10.



11.

12.



13.

2-14-64

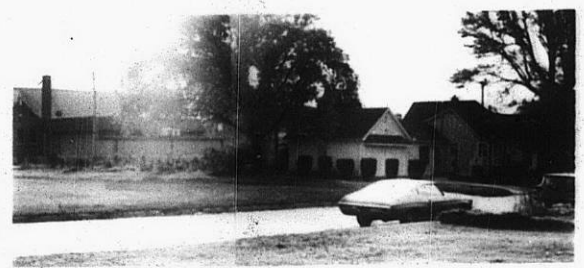


STE

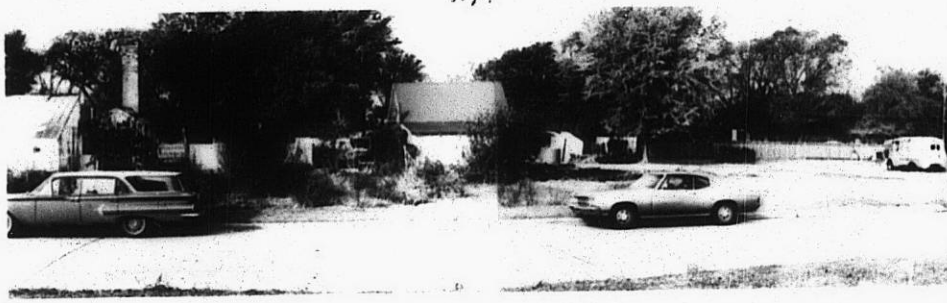
X 5E



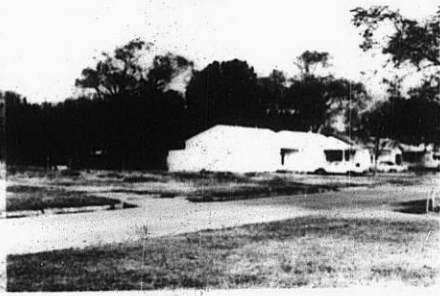
14.



15.



16.



2-1454



17.

17E

17E