

NO. Z-1455 "AA" to "B" 5946

Desc. On the East side of Enoch between Lincoln and Maryland Drive

By Layman L. & Stephen L. Clark

DOA	BODY	ACTION
<u>11/9/72</u>	<u>MAPC</u>	<u>Approved for "R-6" subj to sidewalk</u>
<u>11/28/72</u>	<u>BCC</u>	<u>Approved "R-6" subj to sidewalk</u>

file discarded 2-9-82

Ordinance Resolution No. 32-426 published Dec 8, 1972 (T9-201)

Z-1455

121

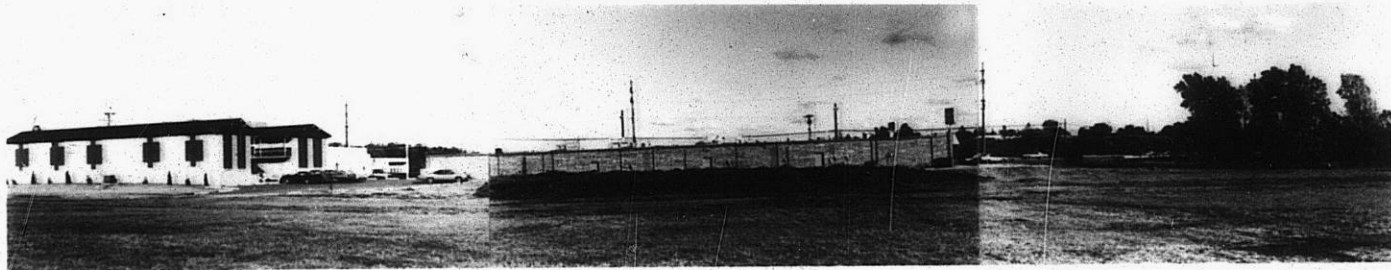
121

1.



Z-1455

2.



3.



4.



319

34x