

NO. Z-1474

"B" & "RB" to "LC"

Desc. On the West side of Meridian in an area South of
McCormick

By Betty Jo & Alton D. Powell by Chris J. Redmond

DOA	BODY	ACTION
1/11/73	MAPC	<i>Deny</i>
1-30-73	<i>BCC. Deny</i>	

file discarded 2-9-82

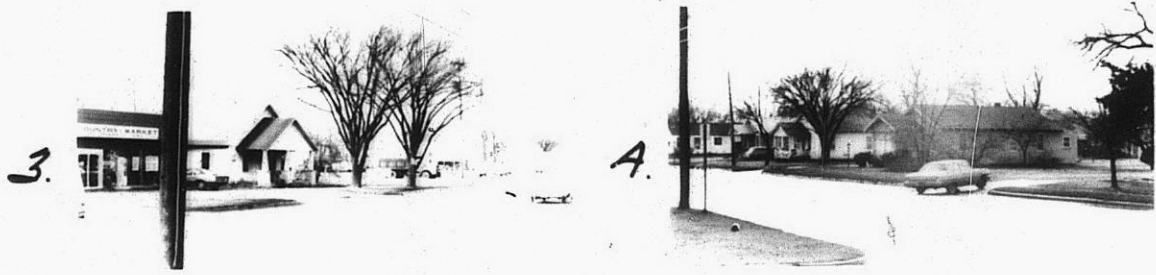
Resolution No. _____ Published _____ (T9-201)

Z-1474

321

321

Z-1474



319

34X