

NO. Z-1481

"G" to "E"

(5145)

Desc. On the Southwest corner of Esthner Av. and Anna

By Tom C. Cain, et al by Robert H. Nelson

DOA

BODY

ACTION

1/25/73

MAPC

Approved subj to replatting on lot split

2.13.73

BCC

Approved

file discarded 2-9-82

Resolution No. 32-705 Published 3-12-74 (T9-201)

Z-1481

STE

X3E

1.



2.



3.



Z-1481

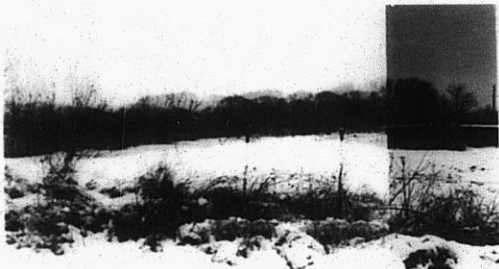
4.



5.



6.



7.



Z 1481

125

125

4.



6.



7.



Z 1481

8.



9.



3E

3E