

NO. Z-1485

"IC" to "C"

Desc. At the Southwest corner of Poplar and Douglas

By Frank Solomon et al by Robert H. Nelson

DOA BODY ACTION

1/25/73 MAPC *Denied*

2-20-73 BCC *Denied*

file discarded 2-9-82

Resolution No. _____ Published _____ (T9-201)

Z-1485

Z-1485

319

348

Z-1485-



1.



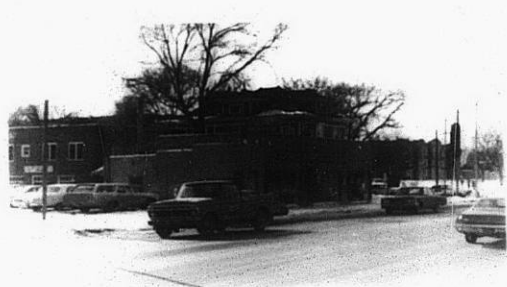
2.



3.



4.



5.

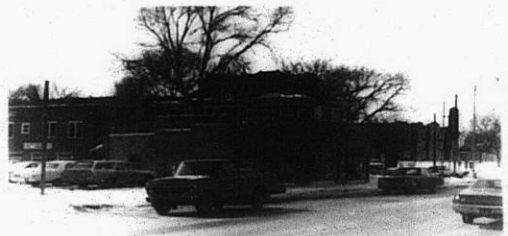


XBE



3.

A.



5.



6.



7.



Z-1485

3E

X5E