

1641-Z

NO. Z-1491 'NA' to 'IC'

Desc. On the NS of Central between Colorado Court on the East and Nevada St. as extended from the North.

By Patricia A. & Willard L. Gettle, Jr. by Vince Bogart  
DOA BODY ACTION

2/22/73 MAPC Approved subj to plotting, attach and dedication  
3-13-73 BCC Approved subj to plotting

6/12/74 CLOSED (5a letter in file dated 6-11-74)

file discarded 2-9-82

Resolution No. \_\_\_\_\_ Published \_\_\_\_\_ (T9-201)

Z-1491

319

34x

1.



Z-1491

2.



3.



4.



5.



6.



7.



8.

Z-1491

34

3.



4.



5.



6.



7.

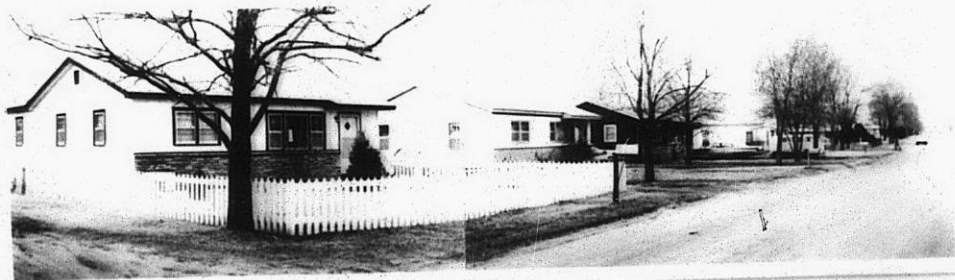
Z-1491

8.



9.

10.



319

347