

NO. Z-1510

"A" to "R-6"

Desc. On the East side of McComas in an area North of

Douglas

By Earl A. Royal by Howard A. Rishel

DOA

BODY

ACTION

4-18-73

MAPC

*Approved "R-5" sub to platting*

5-8-73

BCC

*Approved "R-5" as recommended*

Associated with S/D 73-27

*12/6/74 DENIED & CLOSED on letter in file dated 10/22/74*

Resolution No.

Published

(T9-201)

*file discarded 2-9-82*

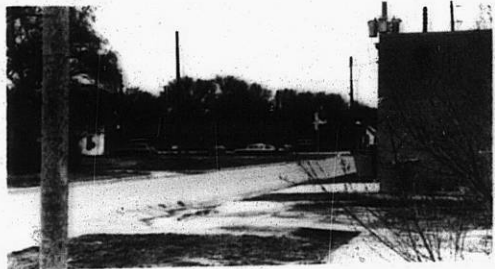
Z-1510

311

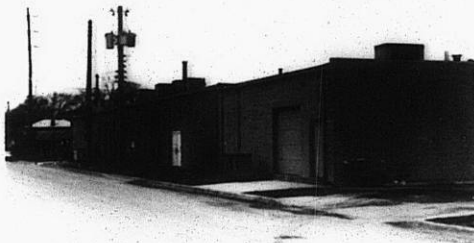
312

Z-1510

1.



2.



3.



4.



5.



6.



7

320

X 4E