

NO. 2-1513 "AA" to "R-5"

Desc. At the Southeast corner of 11th and Ridge Road

By James D. Miner, et al

DOA	BODY	ACTION
<u>4-16-73</u>	<u>MAPC</u>	<u>Not Approved</u>
<u>5-8-73</u>	<u>BCC</u>	<u>Denied</u>

file discarded 2-9-82

Resolution No. _____ Published _____ (T9-201)

2-1513

319

342

Z-1513

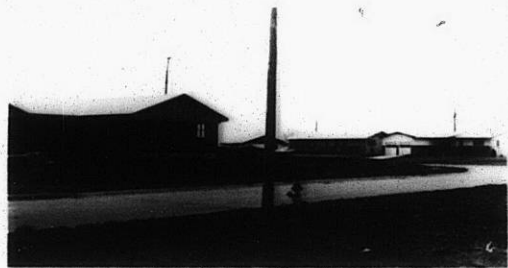
1.



2.



3.



4.

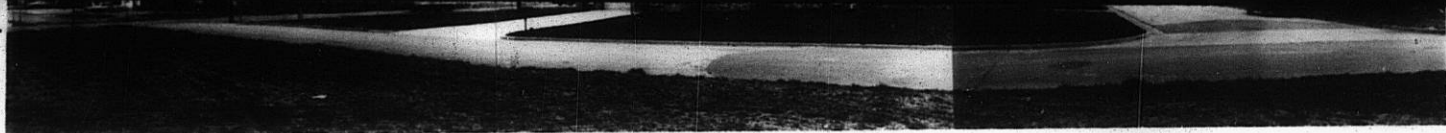


Z-1513

30

34x

2.



3.



4.



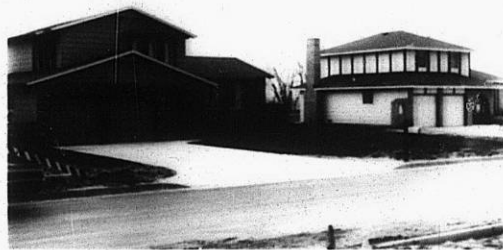
Z-1513



5.



6.



7.

8.



310

34x