

NO. Z-1514 6046 "AA" to "LC" and "AA" & "LC"
to "BB"; and "AA" to "A"

Desc. At the Northwest corner of Harry and Webb Road

By Corb S. Bedell by Oblinger-Smith Corporation
DOA BODY ACTION

5.10.73 MAPC Approved subj to conditions

5.29.73 DCC Approved as recommended

file discarded 2-9-82

Ord # 24-995 - Pub. 5-11-77 closed

Associated with DP-53

Resolution No. 33-376 8-13-74
33-871 33-249 7-23-75 6-6-74 (T9-201)

Z-1514

319

34x

1.



2.



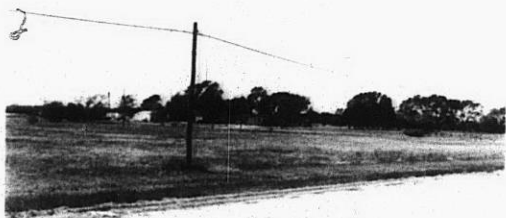
3. Z-1514



4.



5.



6.



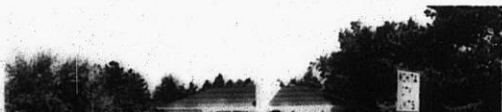
7.

8.



Z-1514

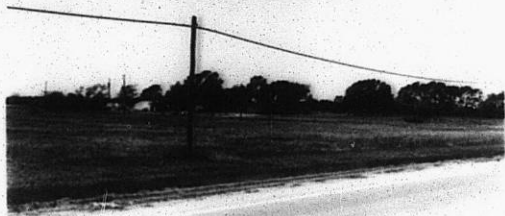
9.



319

34x

5.



6.



7.

8.

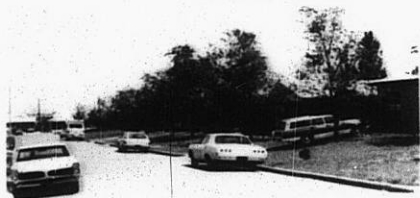


Z-1514

9.



10.



11.



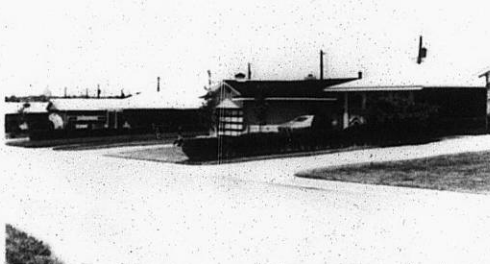
12.



13.



14.



15.



17.

Z-1514

18.

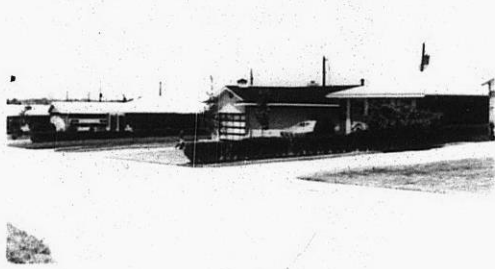
319

347

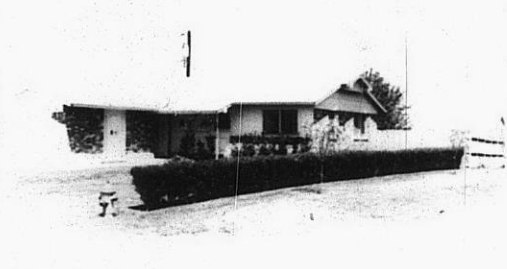
13.



14.



15.



16.



17.



Z-1514

18.

19.



20.



21.



30

34x