

NO. Z-1521

"AA" to "LC"

Desc. On the North side of 13th Street North in an area  
East of Maize Road

By Clewal Construction, Inc. by Grey Dresie

DOA

BODY

ACTION

5-24-73

MAPC

Approved subj to conditions

6-12-73

BCC

Returned to MAPC

6-28-73

MAPC

Approved subj to dedication

7-17-73

BCC

+ design  
Returned to mapc for reconsideration  
plus school analysis.

Associated with DP-54

~~9-27-73~~

~~mapc~~

Deferred indefinitely

Resolution No.

OVER

Published

(T9-201)

file discarded 2-9-82

Z-1521

613

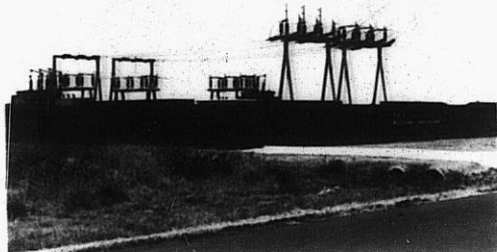
X132

Z-1521

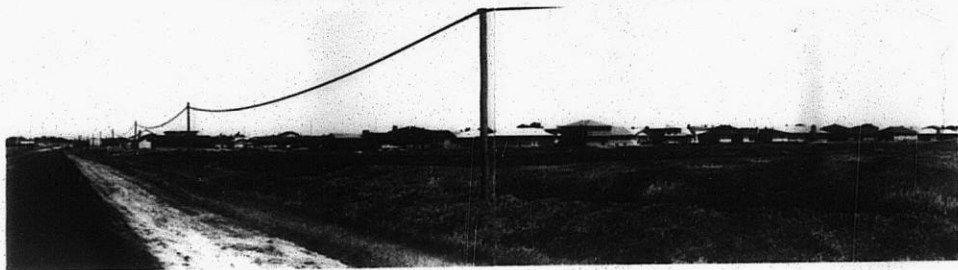
1.



2.



3.



STE

XHE