

NO. Z-1525 <sup>5345</sup> "RB" & "A" to "C";  
<sup>5346</sup> "A" & "P" to "E"

Desc. On the North ~~and South~~ sides of Orient Avenue in  
an area East of Meridian

By Santa Fe Industrial Realty Co., by PEC

DOA	BODY	ACTION
5-24-73	MAPC	Approved subj to platting
6-12-73	BCC	Approved as recommended

file discarded 2-9-82

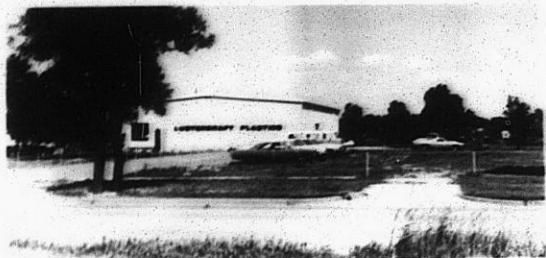
Resolution No. 33-194 Published 3-29-74 (T9-201)

Z-1525

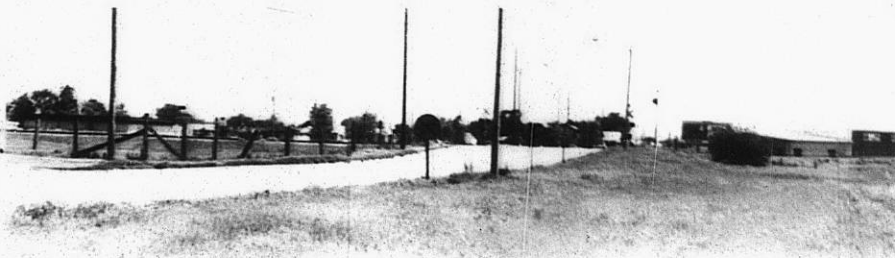
131

132

1.



2.



3.

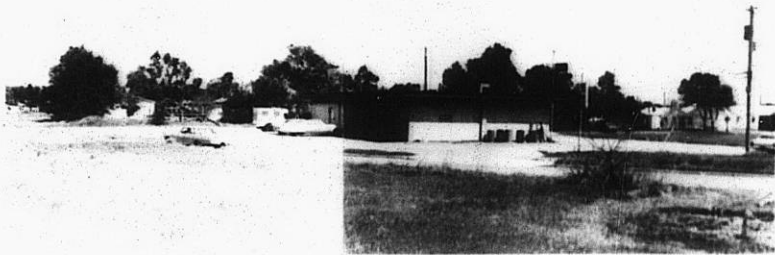


Z-1525

4.



5.



6.



7.



Z-1525

313

313

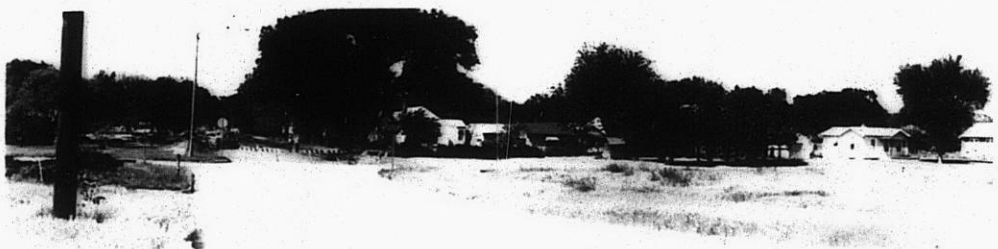
6.



7.



Z-1525



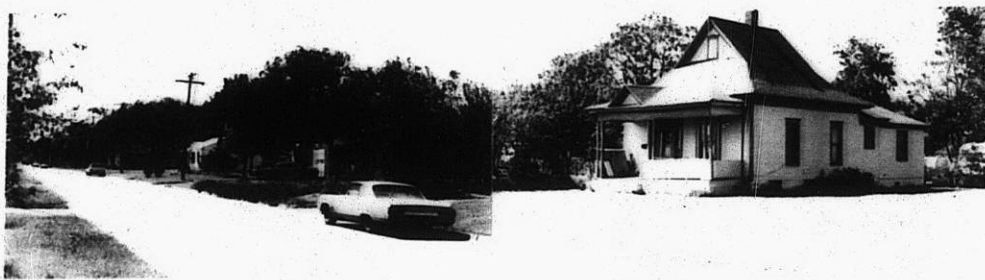
8.



9.



10.



11.

Z-1525

12.

30

34



10.

11.

Z-1525

12.



14.

15.

16.



17.

18.

19.

STE

X 3E