

NO. Z-1527

"BB" to "IC" (5846)

Desc. On the East side of Lightner between Kellogg and Orme

By Elmine G. & Byron G. Stout

DOA	BODY	ACTION
5-24-73	MAPC	Approved subj to curb closing
6-12-73	BCC	Approved as recommended

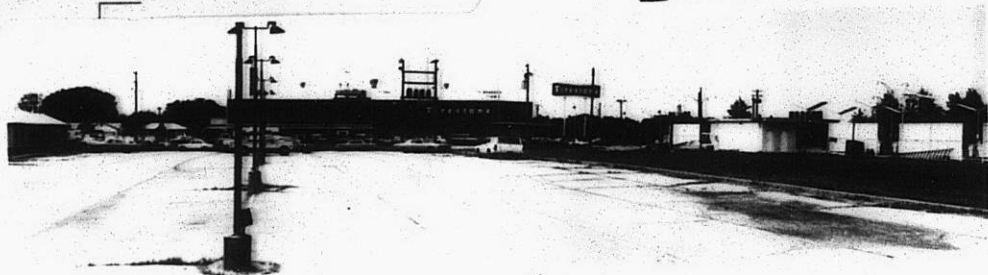
file discarded 1-9-82

Ordinance Resolution No. 32-722 Published 11.21.73 (T9-201)

Z-1527

137
137

Z-1527



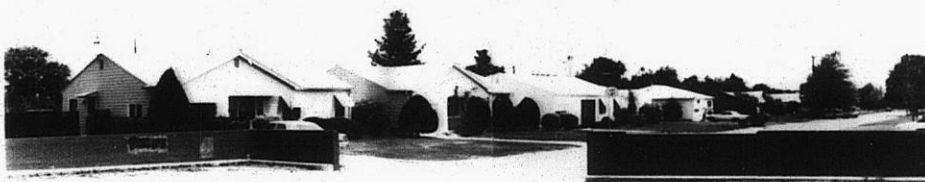
1.



2.



3.



4.



5.



6.

11
132
132