

NO. Z-1531

"AA" & "R-6" to "B" (5946)

Desc. At the NE corner of Enoch Dr. & Maryland Dr.

By George L. Hall & Robert M. Morgan by Willard Thompson

DOA

BODY

ACTION

6-14-73

MAPC

Approved subj. to sidewalks

7.3.73

GCC

approved

file discarded 2-9-82

Resolution No. 32-746 Published 7-13-73 (T9-201)

Z-1531

310

34x

Z-1531

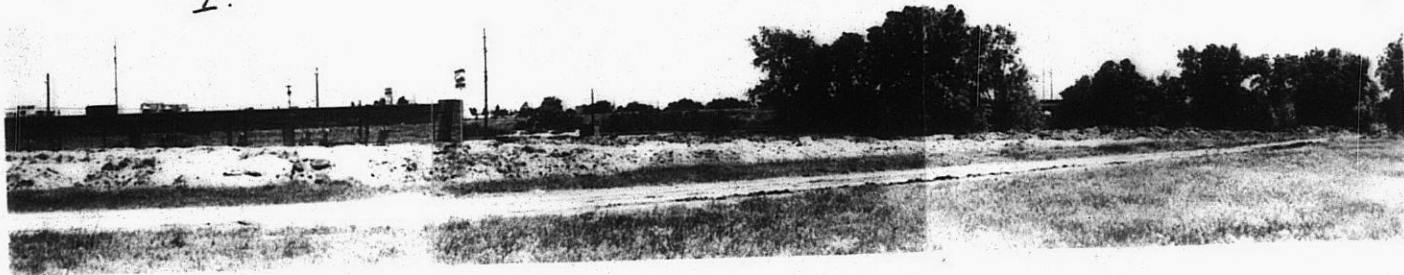


1.



2.

3.



4.



Z-1531

319

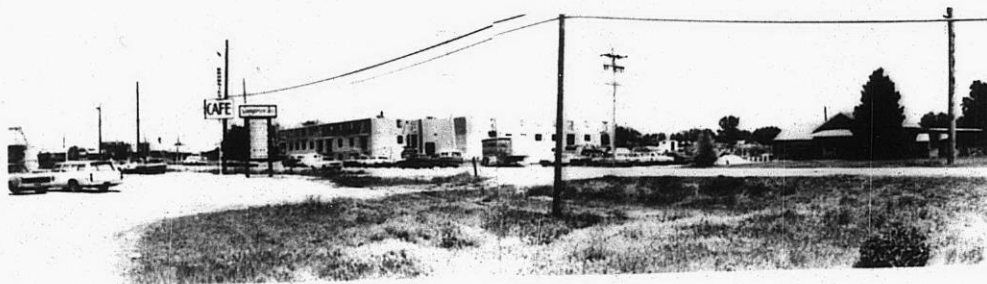
342



4.



Z-1531



5.



6.



7.

319

34x