

NO. Z-1539 "B" to "BB" (5746)

Desc. On the South side of Wilma between Bluffview and Terrace

By H. Stan Chilton by Ernest McRae

DOA	BODY	ACTION
6-28-73	MAPC	<i>approved only to condition</i>
9.4.73	BCC	<i>Approved as recommended</i>

file discarded 2-9-82

Ordinance Resolution No. 32-894 Published 9.28.73 (T9-201)

2-1539

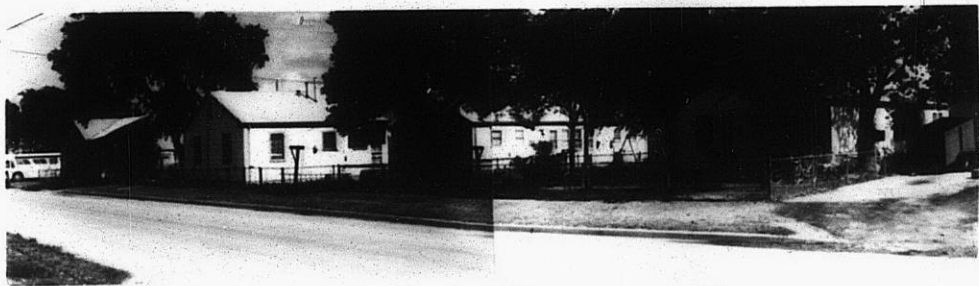
121

121

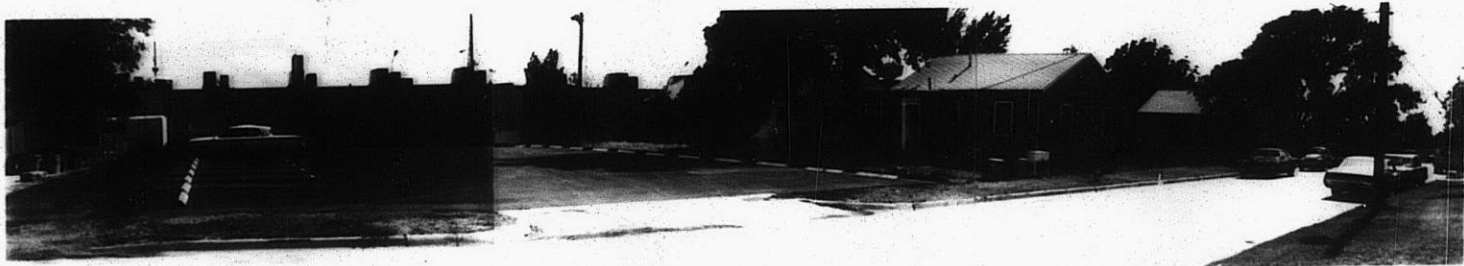
Z-1539



1.



2.



3.



A.



5.

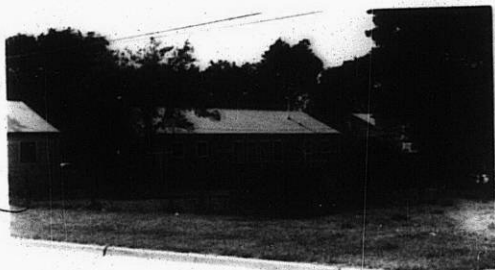
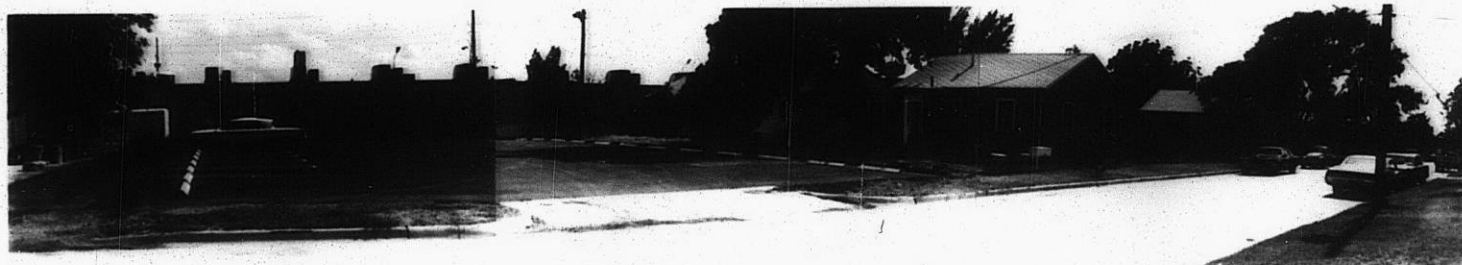
310

34x

1.

2.

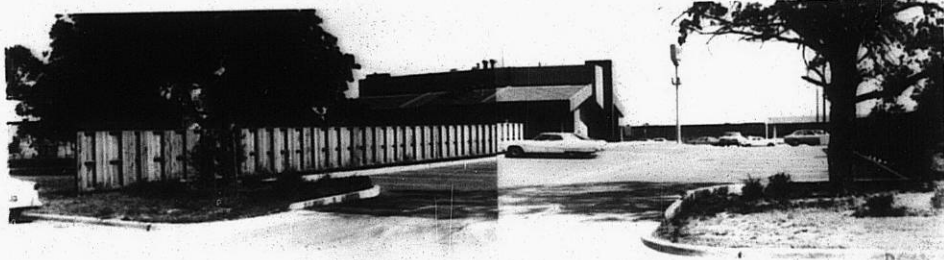
3.



A



5.



6.

Z-1539

319

348